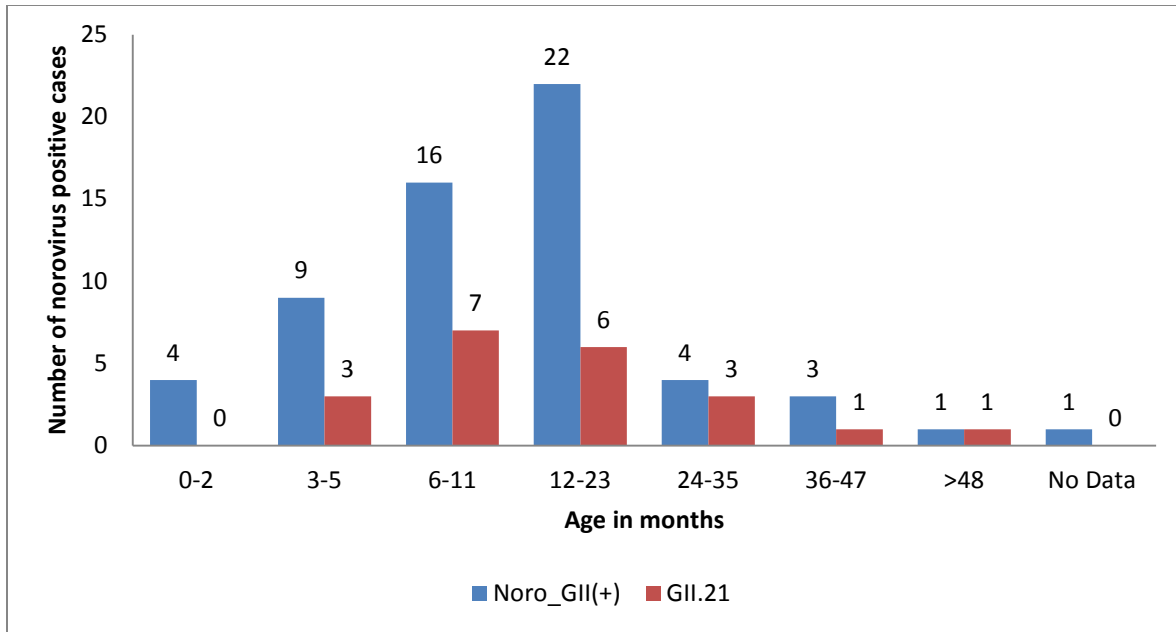


Norovirus GII.21 in Children with Diarrhea, Bhutan

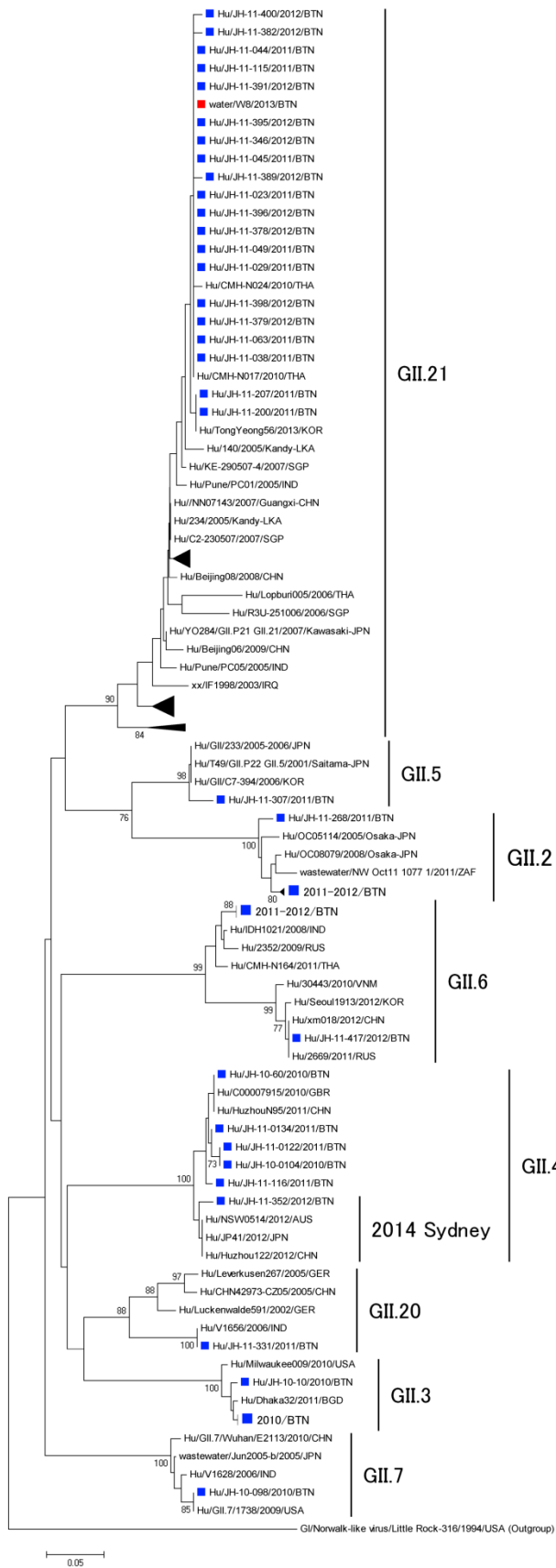
Technical Appendix

Technical Appendix Table. Sample collection date and detailed information of the location, temperature, pH, and fecal coliform count of the samples

Sample no.	Collection date	Place	Longitude	Latitude	Elevation, m	Water temperature, °C	pH	Fecal CFU/100 mL
A	2013/11/21	Motithang source (Big stream)	27°28'43.5"	89°35'48.6"	2800	4.5	8.1	None
B	2013/11/21	Motithang source (Small stream)	27°28'43.7"	89°35'48.5"	2803	5	7.5	3
W1	2013/11/22	Motithang source (Big stream)	27°28'43.5"	89°35'48.6"	2800	4	8.2	None
W2	2013/11/22	Motithang source (Small stream)	27°28'43.7"	89°35'48.5"	2803	5.5	7.8	None
W3	2013/11/22	Junshina source	27°30'14.0"	89°38'08.0"	2343	5	8.2	None
W4	2013/11/22	Cheri side	27°35'36.4"	89°37'42.9"	2574	4.5	8.7	None
W5	2013/11/22	Dodena river	27°35'36.0"	89°37'44.3"	2574	4.5	8.6	None
W6	2013/11/22	Wangchu river	27°27'20.1"	89°39'06.1"	2310	5	8.6	368
W7	2013/11/22	Simtokha river	27°26'18.6"	89°40'21.1"	2375	5	8.5	344
W8	2013/11/23	A house in Changjiji Residential Colony	27°27'14.5"	89°39'13.7"	2284	12	7.8	1
W9	2013/11/23	Changjiji Pump house	27°27'14.3"	89°39'13.7"	2230	12	7.7	None
W10	2013/11/23	Changjiji river tank	27°27'15.9"	89°39'23.2"	2312	12.5	7.7	2
W11	2013/11/23	Lungtenphu Primary School	27°27'27.8"	89°37'56.1"	2473	6	8.0	2
W12	2013/11/23	Changrigphel Lower Secondary School	27°26'48.3"	89°39'45.0"	2307	10	7.9	2
W13	2013/11/23	Changzamtok Lower Secondary School	27°27'42.2"	89°38'25.3"	2346	9	7.6	2



Technical Appendix Figure 1. Age distribution of norovirus (NoV) GII and GII.21 among children in Thimphu, Bhutan. Blue and red columns represent the number of patients with NoV GII and NoV GII.21, respectively among the indicated age categories.



Technical Appendix Figure 2. Phylogenetic tree of the capsid gene at the C region of noroviruses constructed by using nucleotide sequence by neighbor-joining method. For better view of the tree highly related strains of the following genotypes have been collapsed: GII.2, GII.6, and GII.3 are from Bhutan, and GII.21 is from other countries. Numbers adjacent to the nodes represent the bootstrap values. Values <50% are not shown. Each strain is identified by the source of detection followed by strain number, country of origin, and year of detection. Bhutan strains from humans and water sample are indicated by blue and red filled square, respectively. The DDBJ/EMBL/GenBank accession numbers for Bhutan strains are as follows: LC009578–LC009630. Scale bar indicates nucleic acid substitutions per site.