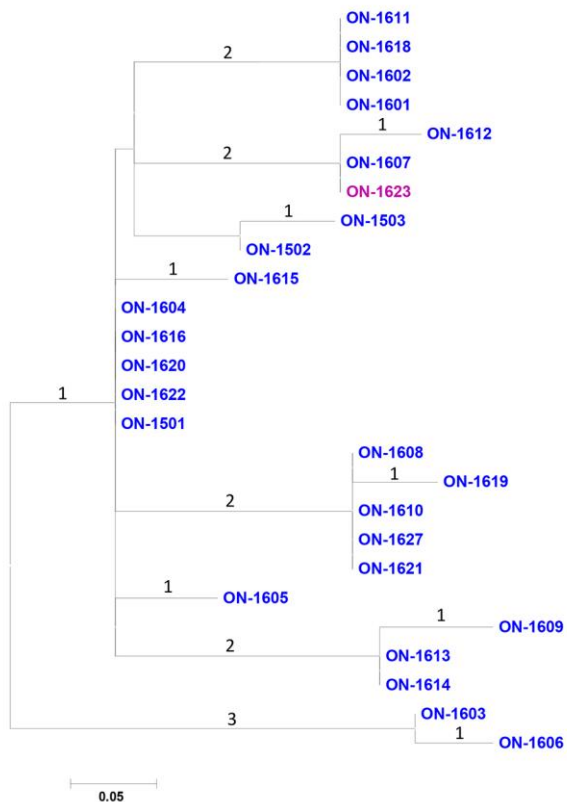


Listeria monocytogenes Associated with Pasteurized Chocolate Milk, Ontario, Canada

Appendix



Appendix Figure. Maximum-likelihood tree for 26 *Listeria monocytogenes* isolates analyzed during listeriosis outbreak, Ontario, Canada. Isolates from clinical specimens fitting the outbreak definition (blue) and an isolate from chocolate milk from a patient's home (purple) were sequenced by using an Illumina (<https://www.illumina.com/>) MiSeq instrument and mapped to the de novo assembly of isolate ON-1603. A custom pipeline was used to identify high-quality core single-nucleotide variants (SNVs). Comparison yielded 20 SNVs. Numbers along branches indicate number of SNVs between nodes. Scale bar indicates nucleotide substitutions per site. ON, Ontario.