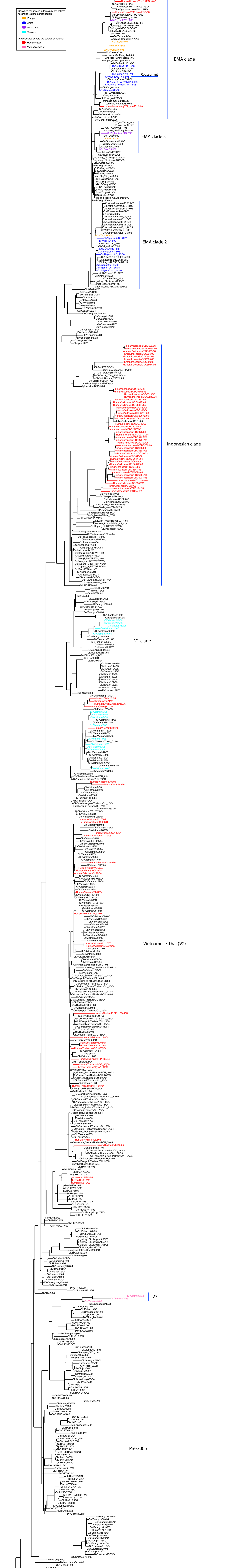


Genomes sequenced in this study are colored according to geographical region:

- Europe
- Africa
- Middle East
- Vietnam

Other isolates of note are colored as follows:

- Human cases
- Vietnam clade V3



EMA clade 1

EMA clade 3

EMA clade 2

Indonesian clade

V1 clade

Vietnamese-Thai (V2)

V3

Pre-2005