

Genetic Characterization of Feline Leukemia Virus from Florida Panthers

Meredith A. Brown,* Mark W. Cunningham,† Alfred L. Roca,*‡§ Jennifer L. Troyer,*§ Warren E. Johnson,* and Stephen J. O'Brien*

From 2002 through 2005, an outbreak of feline leukemia virus (FeLV) occurred in Florida panthers (*Puma concolor coryi*). Clinical signs included lymphadenopathy, anemia, septicemia, and weight loss; 5 panthers died. Not associated with FeLV outcome were the genetic heritage of the panthers (pure Florida vs. Texas/Florida crosses) and co-infection with feline immunodeficiency virus. Genetic analysis of panther FeLV, designated FeLV-Pco, determined that the outbreak likely came from 1 cross-species transmission from a domestic cat. The FeLV-Pco virus was closely related to the domestic cat exogenous FeLV-A subgroup in lacking recombinant segments derived from endogenous FeLV. FeLV-Pco sequences were most similar to the well-characterized FeLV-945 strain, which is highly virulent and strongly pathogenic in domestic cats because of unique long terminal repeat and envelope sequences. These unique features may also account for the severity of the outbreak after cross-species transmission to the panther.

The Florida panther (*Puma concolor coryi*) is the only remaining puma (also called cougar or mountain lion) population east of the Mississippi River in North America. This population, which is confined to a small portion of southern Florida, was originally described as 1 of 30 subspecies of puma (1). By the 1970s, Florida panther numbers diminished to ≈ 30 because of hunting and habitat destruction. Since the early 1980s, the population has been studied extensively by monitoring a large proportion of adults by radio telemetry (2–5). In the early 1990s, concern over

the fate of the population increased as signs of inbreeding and loss of genetic diversity were reported. These observations included low levels of genetic variation, high levels of sperm abnormalities, and increased incidence of heart defects relative to other puma populations and felids in general (2,3). In 1995, faced with the compounding effects of reduced genetic variation, probable depression of numbers from inbreeding, and evidence of compromised health, wildlife managers released 8 female Texas pumas into southern Florida to increase genetic variation and ameliorate the physiologic effects of inbreeding. Subsequently, increases were noted in the population of individuals of mixed genetic heritage, genetic variation, and population size; a decrease was noted in incidence of deleterious physiologic traits in crosses between the pure Florida panthers and the Texas females (4).

The Florida panther population, as well as other North and South American puma populations, has historically tested negative for exposure to or infection by feline leukemia viruses (FeLVs). A serosurvey of 38 free-ranging Florida panthers sampled during 1978–1991 reported complete absence of FeLV antigen (3). However, since early 2001, 23 panthers (>33% of the population) were found to be positive for FeLV antibodies, and at least 5 adult panthers were positive for FeLV antigen and subsequently died. In the 3 panthers available for necropsy, evidence was found of diseases compatible with FeLV infection (5). We describe the molecular genetic characterization of circulating FeLV strains isolated from the 2001–2005 outbreak and compare them with FeLV strains isolated from domestic cats.

FeLV is transmitted horizontally among domestic cats through body secretions (6) and was the first retrovirus shown to cause both neoplastic and degenerative disorders (7,8). Like other retroviruses, FeLV induces im-

*National Cancer Institute, Frederick, Maryland, USA; †Florida Fish and Wildlife Conservation Commission, Gainesville, Florida, USA; ‡University of Illinois at Urbana-Champaign, Urbana, Illinois, USA; and §SAIC-Frederick, Frederick, Maryland, USA

munosuppression in its host. Although the mechanism of immunopathogenesis is unclear, viral envelope proteins may be involved (9). FeLV envelope (*env*) and the long terminal repeat (LTR) sequences have been suggested as being involved in determination of disease sequelae, virus transactivation, and virus replication (10–12). There are 4 naturally occurring viral subgroups of exogenous FeLV (A, B, C, and T) that are distinguished genetically by sequence differences in the *env* gene and functionally by receptor interactions required for cell entry (13). FeLV-A is the predominant subgroup circulating in feral cats and is often only weakly pathogenic (14). FeLV-B, -C, and -T subgroups arise in vivo through recombination between exogenous FeLV strains and domestic cat endogenous FeLVs (8,15). The endogenous feline leukemia provirus sequences are present in the genome of the domestic cat and are transmitted vertically as integral components of the germline (16). Endogenous feline leukemia virus sequences by themselves do not produce infectious virus. However, the pathogenic subgroups, FeLV-B, -C, and -T, are generated by recombination in the *env* region between exogenous subgroup A virus and endogenous proviral sequences (8). FeLV-A, -B, -C, and -T are often associated, respectively, with thymic lymphoma of T-cell origin (17), tumor formation (18), aplastic anemia and bone marrow dysfunction (17), and lymphoid depletion and immunodeficiency disease (13). We used viral genome sequence and phylogenetic analyses to identify and characterize the virulent and pathogenic FeLV in Florida panthers and compare it with FeLV strains in the domestic cat.

Materials and Methods

Sample Collection and Testing

Blood and tissue samples were collected from 61 free-ranging pumas captured during 1988–2004, mainly from south Florida. Samples were stored at -70°C and tested for FeLV antigen and antibody and for feline immunodeficiency virus (FIV) by Western blot as described (5) (Figure 1).

PCR Amplification of Proviral DNA

Genomic DNA was isolated from leukocytes, lymph nodes, spleen, intestines, or bone marrow of 61 panthers, including all that were positive for FeLV antigen and antibody. Proteinase K digestion was followed by standard extraction using the QIAGEN DNeasy tissue DNA extraction kit (#69504; QIAGEN, Valencia, CA, USA). Isolated DNA was visualized by electrophoresis on a 1% agarose gel and quantified by using a UV spectrophotometer (Bio-Rad, Hercules, CA, USA). PCR primers were designed from the conserved regions of *env* and LTR sequences of domestic cat FeLV (GenBank accession nos. M18247, M18248, M12500, AY374189, X00188, M14331, M23025, AY364318). PCR

primers amplifying *env* (437 bp and 1,700 bp) and *env*/LTR (725 bp) are listed in Figure 2. The forward *env*/LTR primer (LTR4) was designed by using panther FeLV (FeLV-Pco) envelope sequence additionally.

PCR was performed by using ≈50 ng of genomic DNA in a 50-μL reaction with 50 mmol/L KCl; 10 mmol/L

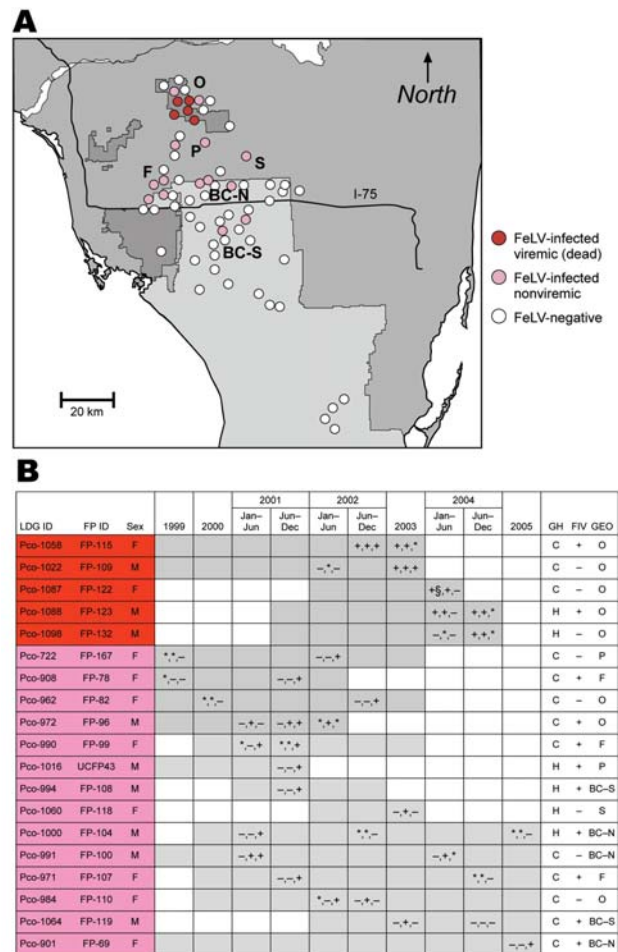


Figure 1. A) Prevalence and distribution of 19 Florida panthers, sampled 1999–2005, showing evidence of feline leukemia virus (FeLV) exposure. All antigen-positive panthers (red) are clustered in the Okaloacoochee Slough State Forest (O). PCR-positive and/or antibody-positive (pink) pumas were found there also, as well as in the surrounding areas including Florida Panther National Wildlife Refuge (F), private lands (P), Big Cypress Seminole Indian Reservation (S), and Big Cypress North and South (BC-N, BC-S, respectively). All but 2 infected panthers were found north of Interstate 75. B) Information on affected panthers. Gray shading indicates timeline for monitoring of individual panthers until death. Symbols within gray boxes indicate presence (+), absence (-), or no data (*) for FeLV antigen in serum, FeLV sequence recovered by PCR, or presence of antibodies against FeLV in serum, respectively. FP-122 was antigen negative when tested 1 month previously (§). LGD ID, Laboratory of Genomic Diversity identification number; FP ID, Florida panther identification number; GH, genetic heritage; FIV, feline immunodeficiency virus; GEO, geographic locale; *, missing data; gray shading, lifespan of panthers; C, canonical (pure) Florida panther; H, Texas hybrid.

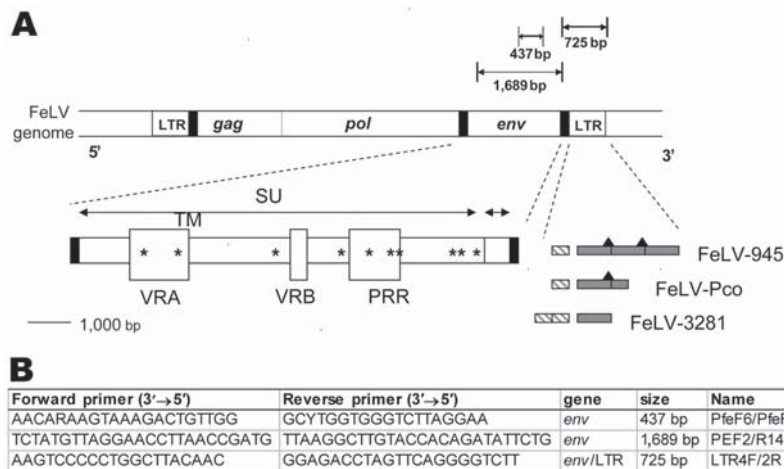


Figure 2. A) Diagram of the feline leukemia virus (FeLV) genome showing the PCR products obtained from FeLV-Pco *env* and long terminal repeat (LTR) genes. Envelope gene surface (SU) and transmembrane (TM) subunits, variable regions A and B (VRA and VRB) and the proline-rich region (PRR), 3' LTR enhancer element(s) (hatched rectangle), signature 21-bp repeat(s) (gray shading), and putative c-Myb binding sites (black triangles) (12) are depicted for FeLV-945, FeLV-Pco, and FeLV-3281A. Unique signature amino acid residues found only in FeLV-945 and FeLV-Pco are marked by asterisks (see Figure 5). B) Primer pair PfeF6/PfeR6 was designed to detect all FeLV subgroups.

Tris-HCl (pH 8.3); 1 mmol/L MgCl₂, 0.25 mmol/L each of dATP, dCTP, dGTP, and dTTP; 2 mmol/L of each primer; and 2.5 U of Taq Gold polymerase (Applied Biosystems, Foster City, CA, USA). PCR was run on a GeneAmp PCR system 9700 thermocycler (Applied Biosystems) under the following conditions: 9 min 45 s at 95°C; then a touch-down of annealing temperatures to reduce nonspecific amplification, always starting with 20 s at 94°C; then 30 s at 60°C (3 cycles), 58°C (5 cycles), 56°C (5 cycles), 54°C (5 cycles), 52°C (5 cycles), or 50°C (22 cycles), and then 30 s (437-bp *env*), 1 min (LTR) or 2 min 20 s (1,698-bp *env*) at 72°C for extension; and a final extension at 72°C for 7 min. PCR products were examined after electrophoresis on a 1% agarose gel. Primers and unincorporated deoxynucleotide triphosphates were removed by using Microcon YM (Millipore, Billerica, MA, USA) technology or exonuclease I and shrimp alkaline phosphatase (Amersham, Piscataway, NJ, USA) (Figure 2). Representative PCR products from independent amplifications were cloned and sequenced. For the *env* and LTR sequences, products were cloned from 4 PCR products each (Figure 2). Cloning was performed with a TOPO-TA cloning kit (Invitrogen, Carlsbad, CA, USA) according to the manufacturer's instructions. DNA was isolated from 6 to 16 clones from each reaction product by using a QIAGEN Miniprep Kit. Sequences were obtained from clones by using internal primers in standard ABI BigDye terminator (Applied Biosystems) reactions. Anticontamination measures were taken at all steps of PCR amplification and after PCR processing. Pre-PCR setup was performed in a laminar flow hood, DNA was added in a free-standing containment hood in a separate room, and all post-PCR manipulations were performed under a fume hood in a third room. All surfaces were washed with a 10% bleach solution, and each hood was exposed to UV light for 30 min before and after use. PCR tubes with individual lids, rather than 96-well plates, were used and kept closed except when reagents and DNA were being added or aliquots

were extracted for use. DNA tubes were opened only under their designated hoods; to avoid cross-contamination, tubes were never open simultaneously. Water and a sample from an FeLV-negative puma were run with every reaction as negative controls. Positive controls of known sequence were also run for each reaction: 1 from a domestic cat, 1 from a known seropositive Florida panther (FP-115 or FP-122), or both.

Phylogenetic Analysis

Sequences from *env* and LTR were analyzed separately. For analysis relative to known domestic cat FeLV sequences, we included FeLV-945, FeLVA-3281, FeLVA-61E, FeLVA-Glasgow-1, FeLVC-Sarma, FeLVB-Rickard, SM-FeSV, enFeLV-AGTT (accession nos. AY662447, M18248, M18247, M12500, M14331, X00188, M23025, AY364318, respectively) (*env*) and FCA-945, FCA-934, FeLVA-3281, and FeLVA-Glasgow-1 (accession nos. AY374189, AY374184, M18248, and M12500, respectively) (LTR). Nucleotide sequences were compiled and aligned for subsequent phylogenetic analysis by ClustalX (19) and verified visually (20). MODELTEST (21) was used for *env* and LTR analysis to estimate the optimal model of sequence evolution; these settings were incorporated into subsequent analyses. Minimum-evolution trees were constructed from models of substitution specified by MODELTEST; starting trees were obtained by the neighbor-joining method, followed by application of a tree-bisection-reconnection branch-swapping algorithm during a heuristic search for the optimal tree. Maximum-parsimony analysis used a heuristic search of starting trees obtained by stepwise addition and followed by tree-bisection-reconnection. Maximum likelihood parameters specified by MODELTEST selected the general time-reversible model of substitution; they included empirical base frequencies and estimated rate matrix and corrected for among-site rate variation (γ distribution). A bootstrap analysis that used

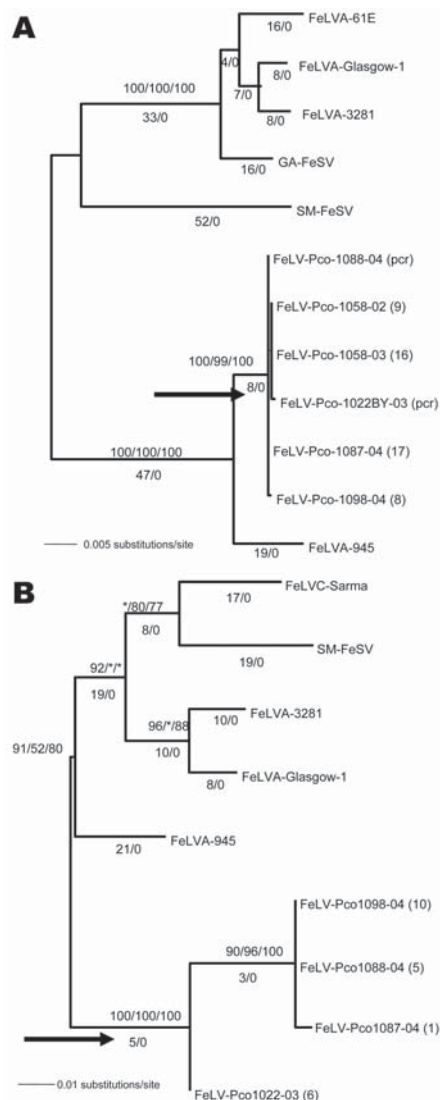


Figure 4. Phylogenetic trees of panther feline leukemia virus (FeLV-Pco) and domestic cat FeLV nucleotide sequences. A) Midpoint rooted maximum-likelihood phylogram based on 1,698 bp of *env* sequences. B) Midpoint rooted maximum-likelihood phylogram based on 463 bp of 3' long terminal repeat (LTR) sequences. Consensus FeLV-Pco sequences of clones generated from 5 *env* and 4 LTR panthers and reference domestic cat sequences are shown. The number of FeLV-Pco-cloned PCR products used in each consensus sequence is indicated in parentheses. The arrow indicates the monophyletic clade of all FeLV-Pco sequences. A similar topology, including the monophyletic clade, was obtained by using the different FeLV-Pco clone sequences rather than a consensus. The year of panther sampling is indicated as a suffix, e.g., Pco-1088-04 was sampled in 2004. Where maximum-likelihood tree was congruent with maximum parsimony tree, branch lengths are indicated below branches. Number of homoplasies is indicated after the branch length. Bootstrap values are shown (maximum parsimony/minimum evolution/maximum likelihood). Asterisk (*) indicates bootstrap value <70. The score ($-\ln$ likelihood) of the best maximum-likelihood tree was *env* 3615.01706, LTRs 1836.05922 (best tree found by maximum parsimony: *env* length = 221, consistency index [CI] = 0.941, retention index [RI] = 0.963; LTR length = 132, CI = 0.871, RI = 0.787).

virus FeLV-945, according to LTR and *env* sequence comparisons (Figure 4); calculated differences were only 1.5% (nucleotide) and 3.5% (amino acid) between FeLV-Pco and FeLV-945 *env* sequences (Table).

Because FeLV-945 is well characterized and highly virulent in the domestic cat (11,25), sequence elements associated with disease determination (*env*) and transcription enhancement (LTR) in FeLV-945 were examined in FeLV-Pco. In the envelope protein, 10 signature amino acid residues (found within the surface glycoprotein) that were shared between FeLV-Pco and FeLV-945 were distinctive from other strains of FeLV (Figure 5). Of these synapomorphic sites, 2 were in variable region A, which in FeLV-945 defines the specificity required for viral binding to receptors (25). Three of the sites were within the proline-rich region, which in FeLV-945 encodes for conformational changes required for FeLV cell entry (25). The FeLV-Pco LTR sequences had 1 copy of a 40-bp enhancer element that has been characterized in FeLV-945 (online Appendix Figure 2, available from www.cdc.gov/EID/content/14/2/252-appG2.htm) (12). Finally, the exogenous domestic cat FeLV-945 isolate, which FeLV-Pco strains resemble (Figures 4, 5), displays unusual repeat junctions where the transcription factor c-Myb is known to bind in FeLV-945, possibly accelerating the rate of transcription of the virus (Figure 2, online Appendix Figure 2) (12). FeLV-Pco also contains 1 copy of this repeat junction (Figure 2, panel A; online Appendix Figure 2), which supports the conclusion that FeLV-Pco is derived from a strain closely related to and perhaps from the pathogenic FeLV-945 domestic cat strain. FeLV-945 is unusual in that its severe pathogenicity does not involve recombination with endogenous FeLV in domestic cats. That FeLV-Pco pathogenesis in pumas is due to a virus similar to FeLV-945 that was not derived from endogenous recombination is consistent with the complete lack of endogenous FeLV sequences in the puma genome.

Discussion

We genetically characterized the FeLV that emerged in the previously naive free-ranging Florida panther population. According to the retrospective longitudinal antibody and antigen results and the virus' geographic distribution, the virus was likely introduced into the Florida panther population in 2001 (Figure 1) (3). From the earliest detected panthers with FeLV (2001) to the most recent (2005), the FeLV-Pco *env* sequences were nearly identical, which indicates that the source of infection was likely a single domestic cat. FP-96, resident in the Florida Panther National Wildlife Reserve area in January of 2001, was the first panther with exposure detectable by PCR. The virus then spread north and east through the population, affecting individual panthers in Big Cypress (FP-100, FP-119), Seminole Indian Reservation (FP-118), and Okaloacooch-

Table. Mean percent amino acid and nucleotide *env* sequence differences of feline leukemia virus subgroups, FeLV-945, and FeLV-Pco strains*

Strain	FeLV A†	FeLV B‡	FeLV C§	FeLV-945¶	FeLV Pco#
FeLV A	1.8, 3.8	10.3	6.6	6.4	6.1
FeLV B	19.1	NA	13.2	14	13.3
FeLV C	16.3	28.7	14.2, 6.2	7.3	7.4
FeLV 945	15.2	30.1	16.4	NA	1.5
FeLV Pco	14.3	28.2	16.7	3.5	0.4, 0.1

*FeLV, feline leukemia virus. Shaded gray boxes contain mean percent sequence differences within strain. **Boldface** indicates mean percent amino acid *env* sequence differences, 1,689 bp (see Figure 2). Nucleotide differences are above diagonal.

†M18247, M18248, M12500, AF052723.

‡X00188.

§M14331, M23025

¶AY374189.

#Pco-1058-02 (9 cloned sequences), Pco-1058-03 (16 cloned sequences), Pco-1087-04 (17 cloned sequences), Pco-1098-04 (8 cloned sequences).

ee Slough (FP-109, FP-108, FP-115, FP-122, FP-123, FP-132) (Figure 1; online Technical Appendix, available from www.cdc.gov/EID/content/14/2/252-Techapp.htm). Texas genetic heritage did not protect infected pumas from disease associated with FeLV; pure Florida panthers and pumas died after having symptoms compatible with FeLV (Figure 1).

Among characterized strains of FeLV, domestic cat FeLV-945 was closest in sequence to FeLV-Pco in the panthers. FeLV-945 in domestic cats was originally isolated as the predominant FeLV species from a geographic cohort of 21 infected domestic cats and is known to cause non-T-cell diseases characterized by degenerative and proliferative changes of myeloid and erythroid origin (26). Although FeLV-945 is included among FeLV subgroup A isolates on the basis of cell receptor utilization, its distinctive envelope and LTR sequence signatures differ from those of other FeLV-A strains (25). At the amino-terminal of the envelope sequence, the surface glycoprotein, also known as gp70, encodes the receptor-binding domain, within which are 2 variable regions, A and B. These define the specificity required for binding. Further downstream, a proline-rich region encodes for the conformational changes required for viral entry (25).

The 10 envelope amino acid residues synapomorphic in FeLV-Pco and FeLV-945 included 2 in variable region A and 3 in the proline-rich region (Figures 2, 5). In FeLV-945 LTR, three 21-bp repeats form 2 junctions: 1 junction is formed by the first repeat and the adjacent second repeat; the other is formed by the second and third repeats. Each junction includes a c-Myb binding site that increases the rate of viral replication through the recruitment of transcriptional coactivator binding protein (cAMP response element) (11). FeLV-Pco LTR sequences had 1 copy of the repeat junction (Figure 2, online Appendix Figure 2) (12). Upstream, LTR transcriptional enhancer elements repeated in tandem have been associated with thymic lymphomas and are found only in 1 copy in non-T-cell disease (26). Like FeLV-945, FeLV-Pco lacks this duplication (Figure 2, online Appendix Figure 2).

In the panthers, clinical and pathologic findings of

FeLV-Pco in this outbreak consisted of FeLV-related diseases of non-T-cell origin. These findings are consistent with the pathologic changes associated with FeLV-945 in the domestic cat. Necropsy findings of FP-115 documented interstitial pneumonia, septicemia, and suppurative lymphadenopathy. Examination of FP-109 1 month before it died found lymphadenopathy, anemia, lymphopenia, and lymphoid hyperplasia. FP-122 had similar findings 1 month before it died, including lymphadenopathy, muscle wasting, and hypercellular bone marrow with >90% hematopoietic cells. FP-132 necropsy findings included severe pallor (indicative of anemia), bronchiointerstitial pneumonia, abscesses, lymphadenopathy, and hypercellular bone marrow with >90% hematopoietic cells (5). FeLV-Pco is therefore similar to the unique and virulent domestic cat strain FeLV-945 of FeLV subgroup A, in *env* and *LTR* sequence and in non-T-cell disease outcome. In the domestic cat, FeLV-

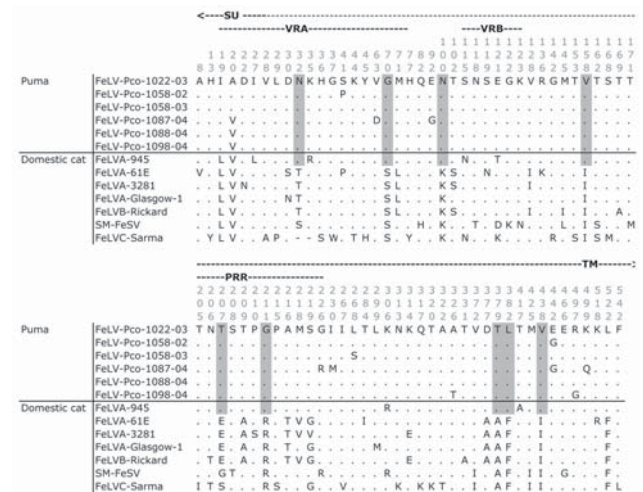


Figure 5. Variable sites in the amino acid alignment of panther feline leukemia virus (FeLV-Pco) and domestic cat FeLV *env* sequences (1,689 bp). Surface glycoprotein (SU), transmembrane (TM), variable region A and B (VRA and VRB), and proline-rich region (PRR) locations are indicated. Horizontal line separates sequences of puma (above) and domestic cat (below). The 10 amino acid residues in this region unique to FeLV-945 and FeLV-Pco sequences are highlighted. Matches to the reference sequence are indicated by dots; gaps are indicated by dashes.

945 causes multicentric lymphoma, myeloproliferative disorder, and anemia and has never been associated with thymic lymphoma (26). These findings shared between FeLV-945 and FeLV-Pco implicate the 10 identified amino acid synapomorphies (Figure 5) as plausible determinants of disease. Further study of these *env* regions from T-cell and non-T-cell disease manifestations of FeLV occurring in comparative felid species is warranted and may elucidate the key sequence determinants of disease outcome in FeLV.

The role of FIV-related immune suppression, if any, in this outbreak is uncertain. Although recent studies of T-lymphocyte profiles in FIV-infected wild lions and pumas suggest that CD4 depletion occurs (27), our survey found that co-infection with FIV was present in 2 but absent in 3 FeLV-associated deaths. FIV-positive panthers could have served as a reservoir for the spread of FeLV through the population because the earliest detected FeLV-exposed panthers (FP-96 and FP-99) were FIV positive. Furthermore, the first panther (FP-115) detected with FeLV-compatible disease in the Okaloacoochee Slough State Forest region was positive for FIV and FeLV for at least 6 months.

An FIV serosurvey suggested an overall increase in the prevalence of FIV in Florida panthers in recent years. During 1999–2000, 3 (15%) of 20 panthers tested had FIV-positive results by Western blot. In contrast, 13 (76%) of 17 panthers tested during 2004–2005 in the FeLV-endemic Okaloacoochee Slough State Forest region (Figure 1) were FIV positive (5). These results could support a role for FIV-mediated immune depletion in FeLV pathogenesis. In domestic cats, FIV and FeLV co-infections have resulted in conflicting interpretations (28–32). In contrast to FIV, which is found in many species of wild felids (33), FeLV in nondomestic felids has been reported only a few times, in captive cats, with documented or suspected exposure to infected domestic cats (5). Serologic survey of free-ranging populations found an absence of FeLV in pumas in California (34), among felids in Botswana (35), and among 38 free-ranging Florida panthers sampled during 1978–1991 (3). However, Jessup et al. (36) document a case of FeLV in a young adult male free-ranging puma captured from a college campus in Sacramento, California. Necropsy of this cougar found generalized lymphadenopathy and lymphoproliferative disease. These necropsy results are consistent with and similar to the clinical findings of the FeLV-positive panthers reported here.

The outbreak of FeLV in the previously naive population of endangered Florida panthers raised questions about management of free-ranging pumas. In response, the Florida Department of Fisheries and Wildlife began a widespread vaccination program of Florida panthers; no additional FeLV cases have since been detected among them (5).

This emerging disease outbreak was characterized by

2 factors. First, because of its unique heritage and popularity, the Florida panther has been the most intensively monitored wild felid in North America. Second, the extensive veterinary surveillance of the domestic cat has provided powerful models for studying infectious diseases relevant to understanding human health and disease, including retroviruses such as FeLV (37). Although future cross-species transmission events among wild and domestic carnivore populations may be unavoidable, our understanding of pathogen and host genetic determinants may also be greatly enhanced by the recent release of the genome sequence of the domestic cat (38). Combining progress in biomedical genomics with intensive studies of wild species can provide insights into emerging pathogens that affect wild, domestic, and human hosts.

Acknowledgments

We thank Jill Slattery for help with data analysis, Jan Martenson and Melody Roelke for help with sample database management and background information about the Florida panther study population, and Meghan Kessler for assistance in the laboratory.

We dedicate this article to Murry Gardner, who originally uncovered the FeLV-945 isolates in California and whose accomplishments and career as a retrovirology pioneer have inspired generations of veterinary scientists.

Samples were collected in full compliance with specific federal permits (Convention on International Trade in Endangered Species; Endangered and Threatened Species) issued to the National Cancer Institute by the US Fish and Wildlife Service of the Department of the Interior.

This project was funded in part with federal funds from the National Cancer Institute, National Institutes of Health, under contract N01-CO-12400. This research was supported in part by the Intramural Research Program of the National Institutes of Health, National Cancer Institute, Center for Cancer Research.

Dr Brown is a veterinarian and a PhD candidate research fellow in the Laboratory of Genomic Diversity at the National Cancer Institute in Frederick, Maryland. Her primary research interests include molecular genetic determinants of viral pathogenesis in the cat model.

References

1. Culver M, Johnson WE, Pecon-Slattery J, O'Brien SJ. Genomic ancestry of the American puma (*Puma concolor*). *J Hered*. 2000;91:186–97.
2. Roelke ME, Martenson JS, O'Brien SJ. The consequences of demographic reduction and genetic depletion in the endangered Florida panther. *Curr Biol*. 1993;3:340–50.
3. Roelke ME, Forrester DJ, Jacobson ER, Kollias GV, Scott FW, Barr MC, et al. Seroprevalence of infectious disease agents in free-ranging Florida panthers (*Felis concolor coryi*). *J Wildl Dis*. 1993;29:36–49.

4. Maehr DS, Lacy R. Avoiding the lurking pitfalls in Florida panther recovery. *Wild Soc Bull.* 2002;30:971–8.
5. Cunningham MW, Brown MA, Shindle DB, Terrell SP, Hayes KA, Ferree BC, et al. Epizootiology and management of feline leukemia virus in the Florida puma. *J Wildl Dis.* In press.
6. Hardy WD Jr, Old LJ, Hess PW, Essex M, Cotter S. Horizontal transmission of feline leukaemia virus. *Nature.* 1973;244:266–9.
7. Jarrett WF, Crawford EM, Martin WB, Davie F. A virus-like particle associated with leukemia (lymphosarcoma). *Nature.* 1964;202:567–9.
8. Mullins JI, Hoover EA. Molecular aspects of feline leukemia virus pathogenesis. In: Gallo RC, Wong-Staal F, editors. *Retrovirus biology and human disease.* New York: Dekker; 1990. p. 87–116.
9. Denner J. How does HIV induce AIDS? The virus protein hypothesis. *J Hum Virol.* 2000;3:81–2.
10. Abujamra AL, Faller DV, Ghosh SK. Mutations that abrogate transactivational activity of the feline leukemia virus long terminal repeat do not affect virus replication. *Virology.* 2003;309:294–305.
11. Chandhasin C, Coan PN, Pandrea I, Grant CK, Lobelle-Rich PA, Puetter A, et al. Unique long terminal repeat and surface glycoprotein gene sequences of feline leukemia virus as determinants of disease outcome. *J Virol.* 2005;79:5278–87.
12. Finstad SL, Prabhu S, Rulli KR, Levy LS. Regulation of FeLV-945 by c-Myb binding and CBP recruitment to the LTR. *Virol J.* 2004;1:3.
13. Overbaugh J, Bangham CR. Selection forces and constraints on retroviral sequence variation. *Science.* 2001;292:1106–9.
14. Phipps AJ, Hayes KA, Al-dubaib M, Roy-Burman P, Mathes LE. Inhibition of feline leukemia virus subgroup A infection by coinoculation with subgroup B. *Virology.* 2000;277:40–7.
15. Stewart MA, Warnock M, Wheeler A, Wilkie N, Mullins JI, Onions DE, et al. Nucleotide sequences of a feline leukemia virus subgroup A envelope gene and long terminal repeat and evidence for the recombinational origin of subgroup B viruses. *J Virol.* 1986;58:825–34.
16. Okabe H, Twiddy E, Golden RV, Hatanaka M, Hoover EA, Olsen RG. FeLV-related sequences in DNA from a FeLV-free cat colony. *Virology.* 1976;69:798–801.
17. Neil JC, Fulton R, Rigby M, Stewart M. Feline leukaemia virus: generation of pathogenic and oncogenic variants. *Curr Top Microbiol Immunol.* 1991;171:67–93.
18. Donahue PR, Quackenbush SL, Gallo MV, deNoronha CM, Overbaugh J, Hoover EA, et al. Viral genetic determinants of T-cell killing and immunodeficiency disease induction by the feline leukemia virus FeLV-FAIDS. *J Virol.* 1991;65:4461–9.
19. Thompson JD, Gibson TJ, Plewniak F, Jeanmougin F, Higgins DG. The CLUSTAL X windows interface: flexible strategies for multiple sequence alignment aided by quality analysis tools. *Nucleic Acids Res.* 1997;25:4876–82.
20. Maddison DR, Maddison WP. *MacClade 3.05.* Sunderland (MA): Sinauer Associates; 1995.
21. Posada D, Crandall KA. MODELTEST: testing the model of DNA substitution. *Bioinformatics* 1998;14:817–8.
22. Kumar S, Tamura K, Nei M. MEGA3: Integrated software for molecular evolutionary genetics analysis and sequence alignment. *Brief Bioinform.* 2004;5:150–63.
23. Benveniste RE, Todaro GJ. Segregation of RD-114 and FeLV-related sequences in crosses between domestic cat and leopard cat. *Nature.* 1975;257:506–8.
24. Reeves RH, O'Brien SJ. Molecular genetic characterization of the RD-114 gene family of endogenous feline retroviral sequences. *J Virol.* 1984;52:164–71.
25. Chandhasin C, Coan PN, Levy LS. Subtle mutational changes in the SU protein of a natural feline leukemia virus subgroup A isolate alter disease spectrum. *J Virol.* 2005;79:1351–60.
26. Chandhasin C, Lobelle-Rich P, Levy LS. Feline leukaemia virus LTR variation and disease association in a geographical and temporal cluster. *J Gen Virol.* 2004;85:2937–42.
27. Roelke ME, Pecon-Slattery J, Taylor S, Citino S, Brown E, Packer C, et al. T-lymphocyte profiles in FIV-infected wild lions and pumas reveal CD4 depletion. *J Wildl Dis.* 2006;42:234–48.
28. Cohen ND, Carter CN, Thomas MA, Lester TL, Eugster AK. Epizootiologic association between feline immunodeficiency virus infection and feline leukemia virus seropositivity. *J Am Vet Med Assoc.* 1990;197:220–5.
29. Ishida T, Washizu T, Toriyabe K, Motoyoshi S, Tomoda I, Pedersen NC. Feline immunodeficiency virus infection in cats of Japan. *J Am Vet Med Assoc.* 1989;194:221–5.
30. Lee IT, Levy JK, Gorman SP, Crawford PC, Slater MR. Prevalence of feline leukemia virus infection and serum antibodies against feline immunodeficiency virus in unowned free-roaming cats. *J Am Vet Med Assoc.* 2002;220:620–2.
31. O'Connor TP Jr, Tonelli QJ, Scarlett JM. Report of the National FeLV/FIV Awareness Project. *J Am Vet Med Assoc.* 1991;199:1348–53.
32. Yamamoto JK, Hansen H, Ho EW, Morishita TY, Okuda T, Sawa TR, et al. Epidemiologic and clinical aspects of feline immunodeficiency virus infection in cats from the continental United States and Canada and possible mode of transmission. *J Am Vet Med Assoc.* 1989;194:213–20.
33. Troyer JL, Pecon-Slattery J, Roelke ME, Johnson W, VandeWoude S, Vazquez-Salat N, et al. Seroprevalence and genomic divergence of circulating strains of feline immunodeficiency virus among Felidae and Hyaenidae species. *J Virol.* 2005;79:8282–94.
34. Paul-Murphy J, Work T, Hunter D, McFie E, Fjelline D. Serologic survey and serum biochemical reference ranges of the free-ranging mountain lion (*Felis concolor*) in California. *J Wildl Dis.* 1994;30:205–15.
35. Osofsky SA, Hirsch KJ, Zuckerman EE, Hardy WD. Feline lentivirus and feline oncovirus status of free-ranging lions (*Panthera leo*), leopards (*Panthera pardus*), and cheetahs (*Acinonyx jubatus*) in Botswana: a regional perspective. *J Zoo Wildl Med.* 1996;27:453–67.
36. Jessup D. Feline leukemia virus infection and renal spirochetosis in a free-ranging cougar (*Felis concolor*). *J Zoo Wildl Med.* 1993;24:73–9.
37. Roelke ME, Martenson JS, O'Brien SJ. The consequences of demographic reduction and genetic depletion in the endangered Florida panther. *Curr Biol.* 1993;3:340–50.
38. Pontius JU, Mullikin JC, Smith DR, Agencourt Sequencing Team, Lindblad-Toh K, Gnerre S, et al. Initial sequence and comparative analysis of the cat genome. *Genome Res.* 2007 17:1675–89.

Address for correspondence: Stephen J. O'Brien, NCI-Frederick, Bldg 560, Rm 11-82, Frederick, MD 21702-1201, USA; email: obrien@ncifcrf.gov

Search past issues of EID at www.cdc.gov/eid

Technical Appendix

Table. Proviral PCR screening, 61 puma samples, 1988–2006*

FP ID†	LGD ID‡	Date§	Range¶	Source#	PCR**	Antigen***††	Antibody titer**
FP25	Pco-116	2/16/88	F	WBC	Neg	ND	ND
FP18	Pco-68	1/23/89	F	BY	Neg	ND	ND
FP28	Pco-154	3/11/89	S	BY	Neg	ND	ND
FP21	Pco-75	5/23/89	E	CT	Neg	ND	ND
FP29	Pco-155	1/10/91	S	BY	Neg	ND	ND
	Pco-409	8/17/91	Peru	CT	Neg	ND	ND
FP54	Pco-487	4/7/92	F	BY	Neg	ND	ND
FP12	Pco-20	1/4/93	F	BY	Neg	ND	ND
FP31	Pco-157	1/6/93	F	BY	Neg	ND	ND
	Pco-554	1/23/93	Nicaragua	WBC	Neg	ND	ND
	Pco-579	5/15/93	Argentina	WBC	Neg	ND	ND
	Pco-581	5/19/93	Paraguay	WBC	Neg	ND	ND
	Pco-582	5/19/93	Uruguay	WBC	Neg	ND	ND
TX33	Pco-741	1/4/96	Texas	WBC	Neg	ND	ND
WC-0	Pco-742	4/14/97	S	BY	Neg	ND	ND
FP78	Pco-908	2/16/99	F	BY	Neg	ND	ND
WC-06	Pco-926	7/19/99	S	BY	Neg	ND	ND
WC-03	Pco-923	1/13/00	S	BY	Neg	ND	ND
FP61	Pco-898	2/17/00	E	BY	Neg	ND	ND
FP89	Pco-969	3/2/00	BC-S	BY	Neg	ND	ND
FP92	Pco-916	4/6/00	F	BY	Neg	ND	ND
TX107	Pco-736	4/19/00	F	BY	Neg	ND	ND
TX105	Pco-739	12/1/00	E	BY	Neg	ND	ND
FP96	Pco-972	1/8/01	F	BY	Pos	Neg	0.337
FP99	Pco-990	1/27/01	F	BY	Neg	ND	0.296
FP100	Pco-991	2/1/01	BC-S	BY	Pos	Neg	0.3
FP101	Pco-992	2/5/01	BC-S	BY	Neg	ND	ND
FP102	Pco-996	2/20/01	BC-S	BY	Neg	ND	ND
FP104	Pco-1000	4/3/01	BC-S	BY	Neg	Neg	0.292
UCFP39	Pco-1004	5/7/01	BC-S	LN	Neg	Neg	ND
FP107	Pco-971	11/1/01	F	BY	Neg	Neg	0.324
FP96	Pco-972	11/3/01	F	BY	Pos	Neg	ND
FP108	Pco-994	11/6/01	BC-S	BY	Neg	Neg	0.273
FP78	Pco-908	12/14/01	F	BY	Neg	Neg	0.454
FP96	Pco-972	1/18/02	F	SP	Pos	Neg	ND
FP110	Pco-984	2/13/02	O	BY	Neg	Neg	ND
FP111	Pco-1023	2/14/02	O	nvPBL	Neg	Neg	0.224
FP112	Pco-1024	2/25/02	BC-S	BY	Neg	Neg	ND
K109FP73	Pco-1025	3/3/02	BC-S	BY	Neg	Neg	ND
UCFP46	Pco-1029	4/10/02	BC-S	SP	Neg	ND	ND
K12FP78	Pco-1038	10/23/02	BC-S	BY	Neg	ND	0.242
FP110	Pco-984	11/25/02	O	BY	Pos	Neg	ND
FP115	Pco-1058	11/26/02	O	BY	Pos	Pos	0.499
FP82	Pco-962	12/6/02	O	BY	Neg	ND	0.262
TX106	Pco-733	1/9/03	F	BY	Neg	ND	ND
FP109	Pco-1022	1/24/03	O	BM	Pos	Pos	0.546
FP118	Pco-1060	3/6/03	S	BY	Pos	Neg	0.157
FP119	Pco-1064	4/4/03	BC-N	BY	Pos	Neg	0.125
FP115	Pco-1058	5/27/03	O	BM	Pos	Pos	ND
FP118	Pco-1060	5/27/03	S	SP	Pos	Neg	ND
K151	Pco-1073	6/12/03	O	BY	Neg	ND	ND

UCFP57	Pco-1076	6/17/03	BC-N	LN	Neg	ND	ND
UCFP58	Pco-1084	6/30/03	S	SP	Neg	ND	ND
FP121	Pco-1085	12/2/03	S	BY	Neg	ND	ND
FP117	Pco-1059	12/3/03	BC-N	BY	Neg	Neg	0.17
FP100	Pco-991	1/6/04	BC-N	BY	Pos	Neg	ND
FP122	Pco-1087	2/2/04	O	BY	Pos	Pos	ND
FP123	Pco-1088	2/2/04	O	BY	Pos	Pos	ND
FP124	Pco-1091	2/13/04	B	BY	Neg	ND	ND
FP127	Pco-1094	2/16/04	B	BY	Neg	ND	ND
FP71	Pco-1095	2/17/04	S	BY	Neg	ND	ND
FP131	Pco-1097	3/10/04	F	BY	Neg	ND	ND
FP132	Pco-1098	3/18/04	O	BY	Pos	Neg	ND
FP78FP83	Pco-914	3/31/04	BC-S	BY	Neg	ND	ND
UCFP65	Pco-1103	4/6/04	F	SP	Neg	ND	ND
FP113	Pco-1037	4/7/04	BC-N	BY	Neg	ND	ND
FP117	Pco-1059	7/29/04	BC-N	BM	Neg	ND	ND
FP132	Pco-1098	8/1/04	O	SP	Pos	Pos	ND
FP119	Pco-1064	11/17/04	BC-N	BY	Neg	Neg	ND
UCFP43	Pco-1016	8/30/05	P	BY	Neg	Neg	0.277
FP67	Pco-722	4/23/06	P	SP	Neg	Neg	0.26

*The 376-bp amplification of *env* was confirmed by sequencing.

†FP ID, Florida panther identification.

‡LGD ID, Laboratory of Genomic Diversity identification.

§Date, month/day/year format.

¶Range, E, Everglades National Park; F, Florida Panther National Wildlife Refuge; O, Okaloacoochee Slough State Forest; P, private lands; S, Big Cypress Seminole Indian Reservation; BC-N, Big Cypress North, BC-S, Big Cypress South.

#Source of DNA isolation: WBC, white blood cell; BY, buffy coat; CT, clot; BM, bone marrow; SP, spleen; LN, lymph node; nvPBMCs, nonviable peripheral blood mononuclear cells.

**Neg, negative; Pos, positive.

††ND, not determined. Antibody titer >0.25 was considered positive (1).

Reference

1. Cunningham MW, Brown MA, Shindle DB, Terrell SP, Hayes KA, Ferree BC, et al. Epizootiology and management of feline leukemia virus in the Florida puma. *J Wildl Dis*. In press.