

Epidemiology of Human T-cell Lymphotropic Virus Type 1 Infection in Blood Donors, Israel

Shmuel Stienlauf,¹ Vered Yahalom,¹ Eli Schwartz, Eilat Shinar, Gad Segal, and Yechezkel Sidi

The prevalence of infection with human T-cell lymphotropic virus type 1 (HTLV-1) in blood donors from Israel is 1 infection/100,000 persons. In donors originating from Eastern Europe, the Middle East, and Latin America, prevalences are 7.7, 14.6, and 20.4, respectively. HTLV-1 prevalence may be high outside areas where HTLV-1 previously was known to be endemic.

Human T-cell lymphotropic virus type 1 (HTLV-1) is prevalent mostly in Japan, Africa, the Caribbean Islands, and South America (1,2). Known HTLV-1 modes of transmission include vertical transmission (predominantly through breastfeeding), transverse transmission (sexual intercourse), transfusion of infected cellular blood products, and sharing of needles and syringes (1,2). Because of reports of HTLV-1-associated diseases in Mashhadi Jews, the Israeli national blood services, Magen David Adom, began screening all blood units for HTLV-1 antibodies in 1995. However, the prevalence of HTLV-1 infection in the general Israeli population has not yet been defined.

Israel is an immigration state, providing a unique opportunity to examine the prevalence of HTLV-1 infection according to donors' countries of origin. This information may reflect the distribution of HTLV-1 within the respective countries of origin, some of which have not had HTLV-1 serosurveys performed.

The Study

Blood donation in Israel is voluntary and does not involve any monetary benefit. Using records from Magen David Adom, we registered age, sex, country of birth, and maternal and paternal countries of birth once for each donor, regardless of the number of blood units donated.

Author affiliations: Sheba Medical Center, Tel Hashomer, Israel (S. Stienlauf, E. Schwartz, G. Segal, Y. Sidi); Tel Aviv University, Tel Aviv, Israel (S. Stienlauf, E. Schwartz, G. Segal, Y. Sidi); and Magen David Adom National Blood Services, Ramat Gan, Israel (V. Yahalom, E. Shinar).

DOI: 10.3201/eid1507.080796

From 1995 through 1998, donors were screened for antibodies against HTLV-1 and HTLV-2 by standard ELISA (Abbott HTLV-1/HTLV-2 enzyme immunoassay; Abbott Laboratories, Abbott Park, IL, USA). Since 1998, testing has been performed by chemiluminescent immunoassay with the PRISM assay (Abbott Laboratories). The confirmatory assay was Western blot HTLV Blot 2.4 (Genelabs Diagnostics, Singapore Science Park, Singapore).

On the basis of virus transmission modes, we developed an algorithm for identifying the ethnic origin of both HTLV-1-positive and HTLV-1-negative blood donors (Figure 1). We considered infection to be acquired in Israel when the donor and both parents were born in Israel. We considered infection to be acquired outside Israel when the donor or 1 parent was born outside Israel. When the donor was born in Israel and the mother was born outside Israel, country of origin was considered the mother's country of birth. When the donor and the mother were born in Israel, but the father was born outside Israel, country of origin was considered the father's country of birth. Detailed classification of geographic origin of blood donors (both HTLV-1 positive and HTLV-1 negative) is given in the online Technical Appendix (available from www.cdc.gov/EID/content/15/7/1116-Techapp.pdf).

Data were analyzed by using Microsoft Access (Microsoft, Redmond, WA, USA) and Epi Info (Centers for Disease Control and Prevention, Atlanta, GA, USA); statistical analysis was conducted by using χ^2 analysis of contingency tables. The odds ratio (OR) and 95% confidence interval were calculated. Age was described as mean \pm standard deviation. The Chaim Sheba Medical Center human subjects research review board approved this study.

From January 9, 1995, through December 31, 2003, a total of 1,256,669 blood donors were screened for HTLV-1 infection in Israel. Of these, 73 HTLV-1 carriers were identified, for an overall prevalence of 5.8 infections per 100,000 donors. Average age at diagnosis was 39.4 ± 11.9 years; 48 (66%) were men (compared with 72% of all blood donors; $p = 0.3125$). All HTLV-1-positive donors had negative serologic results for HTLV-2, human immunodeficiency virus, hepatitis C virus, and hepatitis B surface antigen. HTLV-1 carriers originated from 20 countries (Table).

ORs for HTLV-1 carriers varied by geographic origin of donor (Figure 2). Donors from Middle Eastern and Eastern European countries were at highest risk for HTLV-1 carriage.

Conclusions

The diversity of the population in Israel, combined with systematic screening of blood donors, enabled us to examine the global epidemiology of HTLV-1 infection. One or both parents of at least 67% of Jews in Israel were born

¹These authors contributed equally to this article.

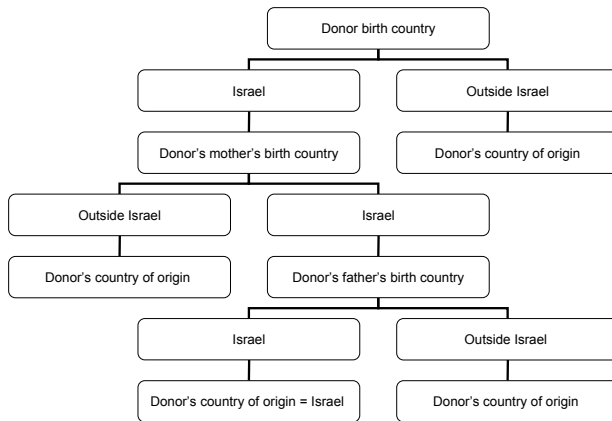


Figure 1. Algorithm for identifying the geographic origin of Israeli blood donors.

outside Israel. Thirteen percent immigrated from Asia, 16% from Africa, and 36% from Europe and the Americas (3). We believe that blood donors are representative of healthy persons in the general population of the country because approximately one third of the population are blood donors.

The prevalence of HTLV-1 infection among blood donors in Israel was 5.8/100,000 but varied depending on donors' geographic origins. In blood donors born in Israel, the prevalence of HTLV-1 infection was 1/100,000, comparable to and even lower than the prevalence of HTLV-1 in blood donors from northern Europe (online Technical Appendix). Unfortunately, information from many countries is either lacking or unrepresentative. We found a similar prevalence of HTLV-1 infection in Jewish immigrants from known HTLV-1 endemic countries to what is known in their native countries. For example, the reported prevalence in blood donors in Latin American countries ranged from 30/100,000 to 1,000/100,000 (online Technical Appendix); our study found a prevalence of 20/100,000.

In donors from the Middle East, we found a high prevalence of HTLV-1 infection in blood donors from Iran (50.4/100,000), Turkey (16.0/100,000), and Iraq (10.2/100,000). Of those countries, only Iran can provide information about HTLV-1 prevalence, and those data are limited to Mashhad (4). Our survey was performed after the initial report of HTLV-1-associated disorders in Israelis born in or originating from Mashhad (5). This example can highlight the role of immigrants as reflectors of the populations in their countries of origin. We found no systematic information about the epidemiology of HTLV-1 in the rest of Iran and neighboring countries. However, anecdotal reports suggest that the infection exists in Kuwait, Turkmenistan, and Georgia (6–8).

In persons from eastern Europe, we found a high prev-

alence of HTLV-1 carriage in blood donors originating from Romania (14.9/100,000), Russia (6.3/100,000), and the former Yugoslavia (62.9/100,000). Most of the literature does not consider eastern Europe endemic for HTLV-1 infection (2). Particularly in Romania, HTLV-1 prevalence is considered low, and HTLV-1 positivity was attributed mainly to immigration from other countries (2). In a careful review of the literature, we found only a few studies involving a small number of blood donors (online Technical Appendix). These studies support our findings and suggest that HTLV-1 is endemic in some eastern European countries. Several cases of adult T-cell leukemia have been described in patients of Romanian origin (9–14).

Our findings establish the need for rigorous screening of blood donors in suspected HTLV-1-endemic areas (Middle East and eastern Europe) and show the impact of immigrants or travelers as sentinels to the health problem in their country of origin. Our data also demonstrate high prevalence of HTLV-1 infection among those whose country of origin had been considered nonendemic for HTLV-1. Viral transmission could have occurred either from the non-Jewish local population or from other Jewish communities in which HTLV-1 is endemic. We are not aware of immigration waves of Jewish populations from Iran and Iraq to Eastern Europe and vice versa. In addition, the prevalence of HTLV-1 in blood donors from Israel is low. Therefore, it seems reasonable to conclude that our findings reflect local HTLV-1 endemicity in the country of origin.

Table. Prevalence of HTLV-1 in blood donors from different countries of origin, Israel, 1995–1998*

Country	No. HTLV-1 carriers	No. blood bank donors	No. carriers/100,000 donors
Iran	16	31,776	50.4
Romania	12	73,971	14.9
Iraq	7	68,857	10.2
Russian Federation	7	111,109	6.3
Turkey	4	25,054	16
Poland	3	70,172	4.3
Israel	3	294,342	1.0
Morocco	3	144,014	2.1
United States	3	49,204	6.1
Yugoslavia†	2	3,181	62.9
Uruguay	2	3,552	56.3
Argentina	2	20,898	9.6
Chile	2	2,101	95.2
Czechoslovakia†	1	11,149	9.0
Brazil	1	4,217	23.7
Niger	1	1	
Ethiopia	1	3,412	29.3
Egypt	1	21,245	4.7
Yemen	1	36,052	2.8
Libya	1	21,427	4.7

*HTLV-1, human T-lymphotropic virus type 1.

†Country no longer exists.

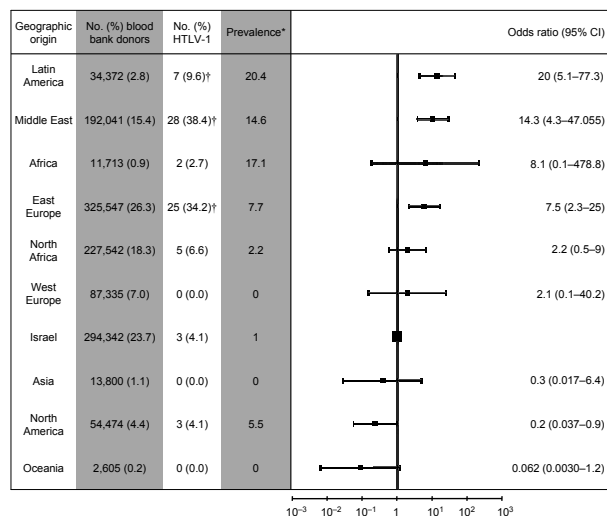


Figure 2. Relative risk for human T-cell lymphotropic virus type 1 carriage in donors from different geographic origins. Odds ratios (indicated by black boxes) are charted in logarithmic scale. Error bars indicate 95% confidence intervals (CI). *Per 100,000 population; † $p < 0.05$.

Dr Stienlauf is head of the national clinic for HTLV-1 infection at the Chaim Sheba Medical Center. His main research interests are travel medicine and tropical medicine.

References

- Verdonck K, Gonzalez E, Van Dooren S, Vandamme A-M, Vanham G, Gotuzzo E. Human T-lymphotropic virus 1: recent knowledge about an ancient infection. *Lancet Infect Dis*. 2007;7:266–81. DOI: 10.1016/S1473-3099(07)70081-6
- Proietti FA, Carneiro-Proietti ABF, Catalan-Soares BC, Murphy EL. Global epidemiology of HTLV-I infection and associated diseases. *Oncogene*. 2005;24:6058–68. DOI: 10.1038/sj.onc.1208968
- Statistical Abstract of Israel 2007. Jews, by continent of origin (1), sex and age. 2007 [cited 2007 Sep 18]. Available from http://www1.cbs.gov.il/shnaton58/st02_22x.pdf
- Abbaszadegan MR, Gholamin M, Tabatabaee A, Farid R, Houshmand M, Abbaszadegan M. Prevalence of human T-lymphotropic virus type 1 among blood donors from Mashhad, Iran. *J Clin Microbiol*. 2003;41:2593–5. DOI: 10.1128/JCM.41.6.2593-2595.2003
- Sidi Y, Meytes D, Shohat B, Fenig E, Weisbort Y, Lee H, et al. Adult T-cell lymphoma in Israeli patients of Iranian origin. *Cancer*. 1990;65:590–3. DOI: 10.1002/1097-0142(19900201)65:3<590::AID-CNCR2820650334>3.0.CO;2-2
- Senyuta N, Syrtsev A, Yamashita M, Stepina V, Susova O, Scherbak L, et al. Sero-epidemiologic and phylogenetic studies of HTLV-I infection in 2 countries of the Caspian Sea region. *Int J Cancer*. 1998;77:488–93. DOI: 10.1002/(SICI)1097-0215(19980812)77:4<488::AID-IJC2>3.0.CO;2-Q
- Voevodin A, Gessain A. Common origin of human T-lymphotropic virus type-I from Iran, Kuwait, Israel, and La Reunion Island. *J Med Virol*. 1997;52:77–82. DOI: 10.1002/(SICI)1096-9071(199705)52:1<77::AID-JMV12>3.0.CO;2-Y
- Voevodin A, al-Mufti S, Farah S, Khan R, Miura T. Molecular characterization of human T-lymphotropic virus, type 1 (HTLV-1) found in Kuwait: close similarity with HTLV-1 isolates originating from Mashhad, Iran. *AIDS Res Hum Retroviruses*. 1995;11:1255–9. DOI: 10.1089/aid.1995.11.1255
- Manca N, Ferremi P, De Simone N, Pirali F, Turano A. Isolation of HTLV-1 from an aggressive form of ATL in a Romanian patient not at risk of infection and with seronegative family members. *New Microbiol*. 1997;20:177–85.
- Veelken H, Kohler G, Schneider J, Dierbach H, Mertelmann R, Schaefer HE, et al. HTLV-I-associated adult T cell leukemia/lymphoma in two patients from Bucharest, Romania. *Leukemia*. 1996;10:1366–9.
- Motoiu IR, Pecek MM, Dumitrescu A, Colita A, Necula A, Moldoveanu E, et al. Introduction to the study of adult T-cell leukemia and HTLV-I sero-positivity in Romania. *Rom J Intern Med*. 1993;31:199–205.
- Shtalrid M, Shvidel L, Korenfeld R, Duek A, Landau Z, Berrebi A. HTLV-1 associated adult T-cell leukemia/lymphoma in Israel: report of two patients of Romanian origin. *Haematologica*. 2005;90:ECR13.
- Lin BT, Musset M, Szekeley AM, Alexandre J, Fraitag S, Bodemer C, et al. Human T-cell lymphotropic virus-1-positive T-cell leukemia/lymphoma in a child. Report of a case and review of the literature. [see comment]. *Arch Pathol Lab Med*. 1997;121:1282–6.
- Schulz TF, Calabro ML, Hoard JG, Carrington CV, Matutes E, Catorovsky D, et al. HTLV-1 envelope sequences from Brazil, the Caribbean, and Romania: clustering of sequences according to geographic origin and variability in an antibody epitope. *Virology*. 1991;184:483–91. DOI: 10.1016/0042-6822(91)90418-B

Address for correspondence: Shmuel Stienlauf, Department of Medicine Chaim Sheba Medical Center, Tel Hashomer, 52621, Israel; email: sshmuel@netvision.net.il

All material published in *Emerging Infectious Diseases* is in the public domain and may be used and reprinted without special permission; proper citation, however, is required.

**EMERGING
-INFECTIOUS DISEASES** 

www.cdc.gov/eid

Receive the table of contents for new issues. Send an email to listserv@cdc.gov with subscribe eid-toc in the body of the message.

Epidemiology of Human T-cell Lymphotropic Virus Type 1 Infection in Blood Donors, Israel

Technical Appendix

Classification of Countries for Determination of Ethnic Origin

Asia

Bangladesh, Bhutan, Cambodia, People's Republic of China, Hong Kong, India, Indonesia, Japan, Republic of Korea, Lao People's Democratic Republic, Malaysia, Mongolia, Myanmar, Nepal, Pakistan, the Philippines, Singapore, Sri Lanka, Taiwan, People's Republic of China, Thailand, Vietnam

Central/South America

Argentina, Belize, Bolivia, Brazil, Chile, Colombia, Costa Rica, Cuba, Dominica, Ecuador, El Salvador, French Guiana, Guatemala, Guyana, Haiti, Honduras, Jamaica, Mexico, Panama, Paraguay, Peru, Puerto Rico, Suriname, Trinidad and Tobago, Uruguay, Venezuela

Eastern Europe

Albania, Belarus, Bulgaria, Czechoslovakia (no longer exists), Estonia, Hungary, Latvia, Lithuania, Republic of Moldova, Poland, Romania, Russian Federation, Ukraine, Union of Soviet Socialist Republics (no longer exists), Yugoslavia (no longer exists)

Western Europe

Austria, Belgium, Denmark, Finland, France, Germany, Greenland, Iceland, Ireland, Italy, the Netherlands, Norway, Portugal, Spain, Sweden, Switzerland, United Kingdom (Great Britain).

Middle East

Afghanistan, Armenia, Azerbaijan, Cyprus, Georgia, Greece, Iraq, Islamic Republic of Iran, Jordan, Kazakhstan, Kuwait, Kyrgyzstan, Lebanon, Saudi Arabia, Syrian Arab Republic, Tajikistan, Turkey, Turkmenistan, Uzbekistan, Yemen

North Africa

Algeria, Egypt, Libyan Arab Jamahiriya, Morocco, Sudan, Tunisia

North America

Canada, United States of America

Oceania

Australia, New Zealand, Papua New Guinea

Sub-Saharan Africa

Angola, Benin, Burkina Faso, Burundi, Cameroon, Central African Republic, Chad, Republic of Congo, Côte d'Ivoire (Ivory Coast), Equatorial Guinea, Ethiopia, Gabon, Ghana, Guinea, Guinea-Bissau, Kenya, Liberia, Madagascar, Malawi, Mali, Mauritania, Mozambique, Somalia, Sierra Leone, Senegal, Rwanda, Nigeria, Niger, Nepal, Namibia, United Republic of Tanzania, Togo, Uganda, Zaire, Zambia, Zimbabwe

Technical Appendix Table. Worldwide prevalence of human T-cell lymphotropic virus 1 (HTLV-1) carriers among blood donors*

Region and location of study population	No. donors tested	No. HTLV-1-positive donors	Prevalence/100,000 population	Ref.
Eastern Europe				
Latvia	150	0	0	(1)
Romania	621	4	640	(2)
Russia, Moscow†	NA	NA	1,400	(3)
Western Europe				
Denmark	NA	NA	2	(4)
Europeans without obvious risk factors	NA	NA	1–2	(4)
France	NA	NA	7	(4)
France	1,816,927	66	3.9	(5)
The Netherlands	674,000	15	2	(4)
Southwestern Greece	107,302	NA	5.6	(6)
Spain	530,000	NA	1.1	(7)
Sweden	235,000	6	2	(4)
		(countries of origin: Sweden, 3; Denmark, 1; UK, 1; Iran, 1; Chile, 1)	(crude; 1 if born in Sweden, 1.3 if born in Europe)	
Sweden	612,000	6	1	(8)
Italy	68,520	5	7	(8)
United Kingdom	NA	NA	5	(4)
North America				
Canada‡	81,962	10	12.2	(9)
USA	39,898	10	25	(10)
USA‡	NA	NA	9.6	(11)
USA	6,400,000	442	7	(8)
Latin America				
Argentina	76 246	25	33	(12)
Argentina, Buenos Aires	86,238	NA	34	(13)
Brazil	6,218,619	NA	40–1,000	(14)
Caracas, Venezuela	23 413	23	98	(15)
Middle East				
Iran, Mashhad	28,928	208	770	(16)
Saudi Arabia	16,434	9	40	(17)
Lebanon	1,900	0	0	(18)
Turkmenistan	1,510	3	199	(19)
North Africa				
Egypt	133	3	2,255	(20)
Tunisia	500	1	50	(21)
Sub-Saharan Africa				
Burkina Faso	191	2	1,047	(22)
Senegal	4,900	7	143	(23)
Asia				
India§	10,000	18	180	(24)
Russia, Komsomol'sk-na-Amure†	NA	NA	1,600	(3)
Russia, Yuzhno-Sakhalinsk†	NA	NA	5,450	(3)

*Ref., reference; NA, not available.

†By passive agglutination.

‡By ELISA.

§Combined HTLV-1 and HTLV-2.

References

1. Kozireva S, Nemceva G, Danilane I, Pavlova O, Blomberg J, Murovska M. Prevalence of blood-borne viral infections (cytomegalovirus, human herpesvirus-6, human herpesvirus-7, human herpesvirus-8, human T-cell lymphotropic virus-I/II, human retrovirus-5) among blood donors in Latvia. *Ann Hematol.* 2001;80:669–73. [Medline DOI: 10.1007/s002770100359](https://doi.org/10.1007/s002770100359)
2. Paun L, Ispas O, Del Mistro A, Chieco-Bianchi L. HTLV-I in Romania. *Eur J Haematol.* 1994;52:117–8. [Medline](#)

3. Seniuta NB, Iakovleva LS, Stepina VN, Buachidze LN, Gurova EP, Kologrivova ZA, et al. [Screening of sera from the adult populations of some USSR regions for antibodies to the human T-cell leukemia virus type I (HTLV-I)]. *Vopr Virusol.* 1990;35:309–12. [Medline](#)
4. Tynell E, Andersson S, Lithander E, Arneborn M, Blomberg J, Hansson HB, et al. Screening for human T cell leukaemia/lymphoma virus among blood donors in Sweden: cost effectiveness analysis. *BMJ.* 1998;316:1417–22. [Medline](#)
5. Courouce AM, Pillonel J, Lemaire JM, Maniez M, Brunet JB. Seroepidemiology of HTLV-I/II in universal screening of blood donations in France. *AIDS.* 1993;7:841–7. [Medline](#)
6. Tseliou PM, Spanakis N, Spiliotakara A, Politis C, Legakis NJ, Tsakris A. HTLV-I and -II in southwestern Greece. *Transfusion.* 2003;43:1641–2. [Medline](#) DOI: [10.1046/j.1537-2995.2003.00569.x](https://doi.org/10.1046/j.1537-2995.2003.00569.x)
7. Toro C, Rodes B, Aguilera A, Caballero E, Benito R, Tuset C, et al. Clinical impact of HTLV-1 infection in Spain: implications for public health and mandatory screening. *J Acquir Immune Defic Syndr.* 2002;30:366–8. [Medline](#)
8. Courouce AM, Pillonel J, Saura C. Screening of blood donations for HTLV-I/II. *Transfus Med Rev.* 1999;13:267–74. [Medline](#) DOI: [10.1016/S0887-7963\(99\)80057-1](https://doi.org/10.1016/S0887-7963(99)80057-1)
9. O'Brien SF, Yi Q-L, Fan W, Scalia V, Kleinman SH, Vamvakas EC. Current incidence and estimated residual risk of transfusion-transmitted infections in donations made to Canadian Blood Services. *Transfusion.* 2007;47:316–25. [Medline](#) DOI: [10.1111/j.1537-2995.2007.01108.x](https://doi.org/10.1111/j.1537-2995.2007.01108.x)
10. Williams AE, Fang CT, Slamon DJ, Poiesz BJ, Sandler SG, Darr WF, et al. Seroprevalence and epidemiological correlates of HTLV-I infection in U.S. blood donors. *Science.* 1988;240:643–6. [Medline](#) DOI: [10.1126/science.2896386](https://doi.org/10.1126/science.2896386)
11. Dodd RY, Notari EP, Stramer SL. Current prevalence and incidence of infectious disease markers and estimated window-period risk in the American Red Cross blood donor population. *Transfusion.* 2002;42:975–9. [Medline](#) DOI: [10.1046/j.1537-2995.2002.00174.x](https://doi.org/10.1046/j.1537-2995.2002.00174.x)
12. Remesar M, Mangano A, Sen L, del Pozo A. Profile of human T-cell lymphocytotropic virus-I/II infections in an Argentinean blood bank population. *Vox Sang.* 2002;83:364–5. [Medline](#) DOI: [10.1046/j.1423-0410.2002.00240.x](https://doi.org/10.1046/j.1423-0410.2002.00240.x)
13. Mangano AM, Remesar M, del Pozo A, Sen L. Human T lymphotropic virus types I and II proviral sequences in Argentinian blood donors with indeterminate Western blot patterns. *J Med Virol.* 2004;74:323–7. [Medline](#) DOI: [10.1002/jmv.20172](https://doi.org/10.1002/jmv.20172)

14. Catalan-Soares B, Carneiro-Proietti AB, Proietti FA. Heterogeneous geographic distribution of human T-cell lymphotropic viruses I and II (HTLV-I/II): serological screening prevalence rates in blood donors from large urban areas in Brazil. *Cad Saude Publica*. 2005;21:926–31. [Medline DOI: 10.1590/S0102-311X2005000300027](#)
15. Leon G, Quiros AM, Lopez JL, Hung M, Diaz AM, Goncalves J, et al. [Seropositivity for human T-lymphotropic virus types I and II among donors at the Municipal Blood Bank of Caracas and associated risk factors]. *Rev Panam Salud Publica*. 2003;13:117–23. [Medline DOI: 10.1590/S1020-49892003000200012](#)
16. Abbaszadegan MR, Gholamin M, Tabatabaee A, Farid R, Houshmand M, Abbaszadegan M. Prevalence of human T-lymphotropic virus type 1 among blood donors from Mashhad, Iran. *J Clin Microbiol*. 2003;41:2593–5. [Medline DOI: 10.1128/JCM.41.6.2593-2595.2003](#)
17. Taha MA, Bashawri LA, Ahmed MS, Ahmed MA. Prevalence of antibodies to human T-lymphotropic viruses types I and II among healthy blood donors. *Saudi Med J*. 2003;24:637–40. [Medline](#)
18. Naman R, Klayme S, Naboulsi M, Mokhbat J, Jradi O, Ramia S. HTLV-I and HTLV-II infections in volunteer blood donors and high-risk groups in Lebanon. *J Infect*. 2002;45:29–31. [Medline DOI: 10.1053/jinf.2002.1006](#)
19. Senyuta N, Syrtsev A, Yamashita M, Stepina V, Susova O, Scherbak L, et al. Sero-epidemiologic and phylogenetic studies of HTLV-I infection in 2 countries of the Caspian Sea region. *Int J Cancer*. 1998;77:488–93. [Medline DOI: 10.1002/\(SICI\)1097-0215\(19980812\)77:4<488::AID-IJC2>3.0.CO;2-Q](#)
20. Constantine NT, Fathi Sheba M, Corwin AL, Danahy RS, Callahan JD, Watts DM. A serosurvey for HTLV-I among high-risk populations and normal adults in Egypt. *Epidemiol Infect*. 1991;107:429–33. [Medline DOI: 10.1017/S0950268800049074](#)
21. Mojaat N, Kaabi H, Hmida S, Maamar M, Slama S, Boukef K. Seroprevalence of HTLV-I/II antibodies in blood donors and different groups at risk in Tunisia. *J Acquir Immune Defic Syndr*. 1999;22:314–5. [Medline](#)
22. Collenberg E, Ouedraogo T, Ganame J, Fickenscher H, Kynast-Wolf G, Becher H, et al. Seroprevalence of six different viruses among pregnant women and blood donors in rural and urban Burkina Faso: A comparative analysis. *J Med Virol*. 2006;78:683–92. [Medline DOI: 10.1002/jmv.20593](#)

23. Diop S, Calattini S, Abah-Dakou J, Thiam D, Diakhate L, Gessain A. Seroprevalence and molecular epidemiology of human T-Cell leukemia virus type 1 (HTLV-1) and HTLV-2 in blood donors from Dakar, Senegal. *J Clin Microbiol.* 2006;44:1550–4. [Medline DOI: 10.1128/JCM.44.4.1550-1554.2006](#)
24. Kumar H, Gupta PK. Is seroprevalence of HTLV-I/II among blood donors in India relevant? *Indian J Pathol Microbiol.* 2006;49:532–4. [Medline](#)