

Knowledge, Attitudes, and Practices Related to Treatment and Prevention of Cholera, Haiti, 2010

Valery E.M. Beau De Rochars, Julie Tipret, Molly Patrick, Lara Jacobson, Kamil E. Barbour, David Berendes, Diana Bensyl, Cathie Frazier, Jean W. Domercant, Roodly Archer, Thierry Roels, Jordan W. Tappero, and Thomas Handzel

In response to the recent cholera outbreak, a public health response targeted high-risk communities, including resource-poor communities in Port-au-Prince, Haiti. A survey covering knowledge and practices indicated that hygiene messages were received and induced behavior change, specifically related to water treatment practices. Self-reported household water treatment increased from 30.3% to 73.9%.

Haiti had not experienced an outbreak of cholera for more than half a century. This changed in October 2010 when a large outbreak occurred in Artibonite Department and quickly spread to the remaining departments of Haiti, including the city of Port-au-Prince (1). Given the prevalence of known risk factors for explosive spread of the disease (e.g., low socioeconomic status, high population density), an emergency public health response was initiated. With crowded conditions and limited access to safe water and sanitation, persons living in the capital of Port-au-Prince were especially vulnerable to acquiring cholera (2–5). This risk was exacerbated by the January 12, 2010, earthquake, which led to >1.5 million persons seeking shelter and services at internally displaced persons settlements in and around the capital (6). The first cases were confirmed in Port-au-Prince on November 7, 2010.

Author affiliations: Centers for Disease Control and Prevention, Atlanta, Georgia, USA (V.E.M. Beau De Rochars, M. Patrick, L. Jacobson, K.E. Barbour, D. Berendes, D. Bensyl, C. Frazier, R. Archer, T. Roels, J.W. Tappero, T. Handzel); Groupe de Recherche et d'Echanges Technologiques, Port-au-Prince, Haiti (J. Tipret); and Centers for Disease Control and Prevention Port-au-Prince (J.W. Domercant)

DOI: <http://dx.doi.org/10.3201/eid1711.110818>

As of August 8, 2011, Port-au-Prince had reported 112,464 cholera cases and 760 deaths (6).

In response to the cholera outbreak, the Haiti government and partner agencies initiated emergency public health response activities aimed at treating suspected cholera cases and preventing new ones. Response activities included mass media cholera campaigns through radio and hygiene promotion activities by community health workers, distribution of water purification tablets and soap, and limited distribution of oral rehydration solution (ORS) sachets. Prevention efforts focused on internally displaced person settlements in Port-au-Prince and the poorer neighborhoods of the city where information regarding cholera knowledge, dissemination of cholera information, and distribution of treatment and prevention supplies was limited.

The Study

During December 6–7 and 14–16, 2010, we conducted a survey to assess the effectiveness of interventions implemented to prevent the spread of cholera and to improve specific response activities in these neighborhoods. Because this investigation was a public health response to an emergency, the Centers for Disease Control and Prevention determined that institutional review board review was not necessary. Informed consent was obtained from all participants.

The survey collected cross-sectional data on household demographics, communications preferences, knowledge of cholera transmission and prevention, water sources and treatment, and hygiene practices. Samples of stored water in the home were tested for chlorine residue by using the Hach Free Chlorine Test (Hach Co., Loveland, CO, USA) to provide an objective measure of water treatment. Microbiological testing for *Escherichia coli* by using IDEXX Quanti-Tray/2000 (IDEXX Laboratories, Inc., Westbrook, ME, USA) was also conducted on source water. Sampling weights according to the population size were used to improve the overall representativeness of results.

A household questionnaire (online Technical Appendix, wwwnc.cdc.gov/EID/pdfs/11-0818-Techapp.pdf) was pilot tested and administered to 405 households from 27 clusters from resources-limited areas of Cité Soleil, Delmas, Carrefour, and Pétion-Ville (Figure). Clusters were randomly selected by using population proportional to size sampling, with the exception of Cité Soleil, which was undersampled to provide more geographic representation in the sample. In each of the 27 selected clusters, 15 households were selected randomly along a radius from the edge to the center of the cluster.

Persons interviewed were primarily female heads of households (81%). Average household size was 5 persons, and median age of respondents was 35 years (range 17–80

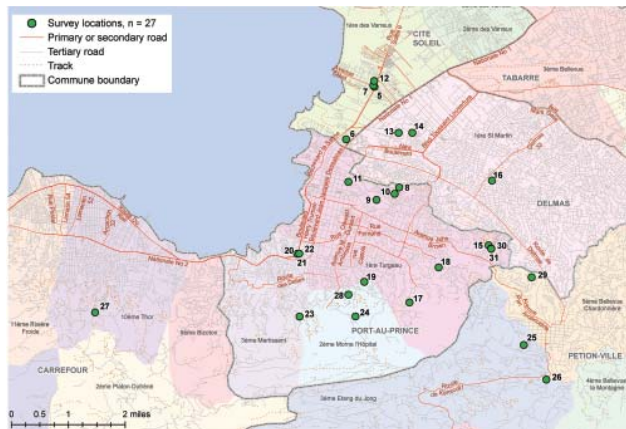


Figure. Selected clusters for the knowledge, attitudes, and practices related to treatment and prevention of cholera survey administered during December 6–7 and 14–16, 2010, Port-au-Prince, Haiti.

years). Most respondents had access to a cellular telephone (88.1%), radio (67.1%), and television (66.3%). The preferred forms of communication for receiving cholera messages were television (71.1%), radio (68.8%), and trucks with megaphones (44.0%). Knowledge of common signs of cholera was high; the 2 most common signs described were diarrhea (89.1%) and vomiting (83.4%). Respondents also showed high knowledge of transmission modes; 71.9% indicated consumption of contaminated water and 61.4% indicated consumption of contaminated food. The most common prevention method cited was handwashing (86.0%).

Before the outbreak, the most common drinking water sources were piped water to tap stands and public kiosks (Table 1). These water sources were chlorinated irregularly,

and only 6.2% of respondents believed that drinking water from the piped supplies was safe. Microbiological testing of 11 unchlorinated piped water sources indicated that 7 were positive for an indicator of fecal contamination (*E. coli*). Collection of tap water decreased during the cholera outbreak, whereas collection of drinking water from private kiosks nearly doubled (47.6%). Public health messages on the health benefits of water treatment showed diffusion in these neighborhoods; water treatment practices increased from 30.3% before the cholera outbreak to 73.9% after the outbreak ($p < 0.05$), and the 2 most common methods used were water purification tablets (66.6%) and bleach (57.7%) (Table 1). Water purification tablets were considered palatable by most respondents (87.7%), and 70.2% reported purchasing them in the past month (Table 2).

Among 403 (99.5%) households, ~60% of samples from stored drinking water tested positive for residual chlorine (range 0–3.5 mg/L). Additionally, during the survey administration, nearly all (94.4%) water storage containers had a cover on them that could reduce the chance of contamination.

Hygienic practices (e.g., handwashing and latrine use) are critical for preventing the spread of diarrheal diseases (7–10). Active acceptance of these practices and use of soap was high among respondents. Approximately 94.1% reported washing their hands with soap; 84.1% reported having access to soap, 95.7% reported purchasing soap, and 16.5% reported receiving soap from a distribution location since the outbreak started (Table 2). Use of improved latrines was also reported by most respondents (74.0%).

ORS is a lifesaving therapy for diarrheal diseases, including cholera (11). Nearly 90% of respondents stated that they knew the method of ORS preparation, although only 76.0% of respondents indicated the correct volume of

Table 1. Drinking water sources and treatment before and after cholera outbreak, as reported by survey respondents, Port au Prince, Haiti, 2010*

Source or treatment	Before outbreak		After outbreak	
	No. yes/total no. respondents	Weighted % (95% CI)	No. yes/total no. respondents	Weighted % (95% CI)
Water source				
Piped public kiosk	122/396	32.5 (21.3–43.7)	84/391	21.5 (10.5–32.5)
Piped in house	101/396	26.9 (15.1–38.7)	57/391	15.1 (7.9–22.2)
Private kiosk	129/396	26.8 (18.7–34.9)	203/391	47.6 (36.2–58.9)
Tank filled by truck	11/396	4.4 (0–8.6)	12/391	5.1 (0.8–9.4)
Bladder	3/396	0.6 (0–1.2)	8/391	3.2 (0–8.0)
Other source	7/396	1.3 (0–3.3)	7/391	1.9 (0–3.9)
Treated water (any method)	130/405 (30.3)	30.3 (22.1–38.4)	307/405	73.9 (67.2–80.6)
Method of treatment†				
Water purification tablets	79/119 (66.6)	66.6 (52.8–80.4)	259/301	86.1 (80.2–92.0)
Bleach	76/132 (57.7)	57.7 (47.6–67.8)	174/347	50.1 (36.2–64.1)
Boiling	11/162 (6.8)	6.8 (2.9–10.7)	25/385	6.5 (3.4–9.6)
PuR, Gadyen Dlo, or Dlo Lavi	0	NA	1/333	0.3 (0–0.8)
Other answer	4/160 (2.5)	2.5 (0–5.5)	2/100	2.0 (1.3–3.3)

*CI, confidence interval; NA, not applicable. Sampling weights are according to population size. Before and after data were collected at 1 time point.

†Respondents selected >1 method of water purification.

Table 2. Access to soap and attitudes toward water purification tablets, Port au Prince, Haiti, December 6–7 and 14–16, 2010*

Access and attitude	No. respondents	Weighted† % (95% CI)
Soap		
Received soap	65	16.5 (3.6–29.4)
Purchased soap	381	95.7 (93.9–97.5)
Had soap at the house at time of survey	355	84.1 (81.3–86.9)
Water purification tablets		
Received in the past month	178	41.5 (29.9–53.1)
Bought in the past month, n = 403	279	70.2 (64.3–76.2)
Know how to use, n = 402	389	97.5 (96.0–99.1)
Perceptions of water purification tablets, n = 387		
Strong taste, unacceptable	25	4.7 (2.4–7.0)
Some taste, acceptable	345	87.7 (83.7–91.6)
No taste	3	0.6 (0–1.2)

*n = 404 except as indicated. CI, confidence interval.

†Sampling weights are according to population size.

water needed to prepare an ORS sachet as recommended by the World Health Organization (12). One fourth of respondents had ORS in their home when the survey was conducted.

This investigation had several limitations. Because of security restrictions, independent enumerators could not be used. Therefore, some of the enumerators were persons who participated in the implementation of the cholera prevention activities in these communities. Their presence might have biased certain respondent answers. Additionally, sampling was based on available population data from the 2003 census. Migration is likely to have occurred after the earthquake and might have resulted in nonproportional sampling. Finally, sanitation is a sensitive subject within Haitian culture; thus, self-reported access to latrines might be exaggerated. Despite these limitations, the survey provided valuable information reflecting the impact of the public health response to the outbreak and identified areas for improvement.

Conclusions

Overall, the knowledge of cholera symptoms, prevention, treatment, and modes of transmission indicated that public health messages had been effective. Cholera messaging was successful in promoting behavior changes to address the threat of cholera, especially in increasing acceptance of drinking chlorinated water. Recommendations include additional education campaigns to improve knowledge of correct dosing of water with water purification tablets, ORS preparation, and cholera-prevention methods. Additional follow-up is needed to ensure wide-scale availability of household water treatment products and instruction on proper dosing. Public health officials should take advantage of the substantial interest in and acceptance of chemical water treatment and develop sustainable household water treatment programs. More importantly, a concerted effort should be made to improve the safety of water sources through infrastructure upgrades

and improved treatment practices. These upgrades would spur timely sanitary reform and improvements to the public health system of Haiti, which occurred over a century ago in Europe, North America, and most recently in Latin America after the introduction of cholera in the 1990s (13,14).

Acknowledgments

We thank Thomas Bender, Randall Young, Emmanuel Rossignol, Patrice Joseph, Anna Newton, and Group de Recherche et d'Echanges Technologiques staff for their contributions to this project.

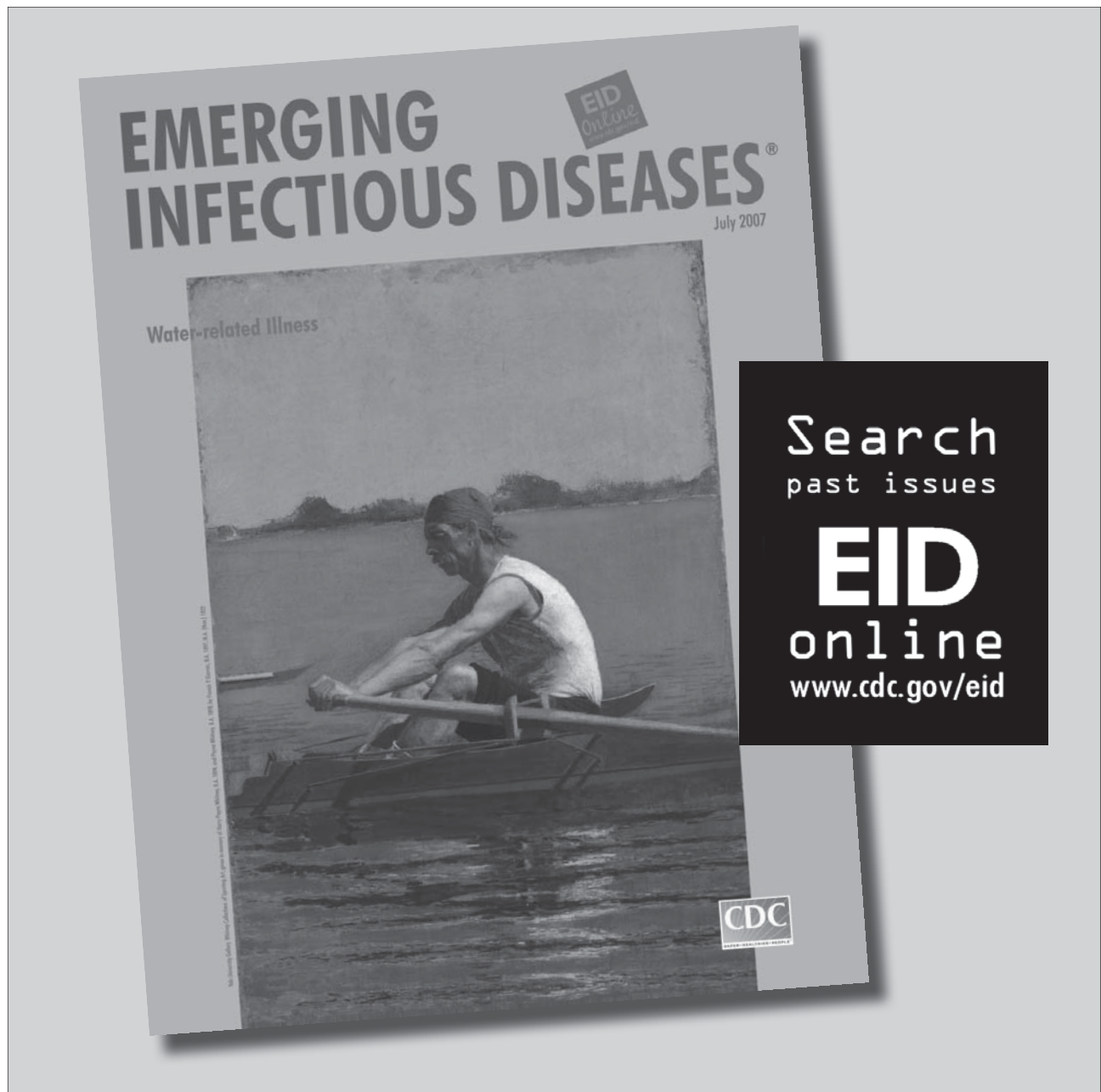
Dr Beau De Rochars is an Epidemic Intelligence Service (EIS) officer at the Centers for Disease Control and Prevention in the EIS Field Assignments Branch stationed in the Florida Department of Health. His major research interests include emerging and zoonotic infectious diseases and vector-borne pathogens.

References

- Centers for Disease Control and Prevention. Update: cholera outbreak—Haiti, 2010. *MMWR Morb Mortal Wkly Rep.* 2010;59:1473–9.
- Weber JT, Mintz ED, Canizares R, Semiglia A, Gomez I, Sempertegui R, et al. Epidemic cholera in Ecuador: multidrug-resistance and transmission by water and seafood. *Epidemiol Infect.* 1994;112:1–11.
- Swerdlow DL, Malenga G, Begkoyian G, Nyangulu D, Toole M, Waldman RJ, et al. Epidemic cholera among refugees in Malawi, Africa: treatment and transmission. *Epidemiol Infect.* 1997;118:207–14.
- Swerdlow DL, Mintz ED, Rodriguez M, Tejada E, Ocampo C, Espeje L, et al. Waterborne transmission of epidemic cholera in Trujillo, Peru: lessons for a continent at risk. *Lancet.* 1992;340:28–33.
- Ries AA, Vugia DJ, Beingolea L, Palacios AM, Vasquez E, Wells JG, et al. Cholera in Piura, Peru: a modern urban epidemic. *J Infect Dis.* 1992;166:1429–33.
- Haitian Ministry of Public Health and Population [cited 2011 Jul 28]. http://www.mspp.gouv.ht/site/index.php?option=com_content&view=article&id=57&Itemid=1

7. DuBois AE, Sinkala M, Kalluri P, Makasa-Chikoya M, Quick RE. Epidemic cholera in urban Zambia: hand soap and dried fish as protective factors. *Epidemiol Infect.* 2006;134:1226–30.
8. Hutin Y, Luby S, Paquet C. A large cholera outbreak in Kano City, Nigeria: the importance of hand washing with soap and the danger of street-vended water. *J Water Health.* 2003;1:45–52.
9. Curtis V, Cairncross S. Effect of washing hands with soap on diarrhoea risk in the community: a systematic review. *Lancet Infect Dis.* 2003;3:275–81.
10. Ejemot RI, Ehiri JE, Meremikwu MM, Critchley JA. Hand washing for preventing diarrhoea. *Cochrane Database Syst Rev.* 2008;CD004265.
11. Victora CG, Bryce J, Fontaine O, Monasch R. Reducing deaths from diarrhoea through oral rehydration therapy. *Bull World Health Organ.* 2000;78:1246–55.
12. World Health Organization. Guidelines for cholera control. Geneva: The Organization; 1993. p. 20–2.
13. Sepúlveda J, Valdespino JL, Garcí a-García L. Cholera in Mexico: the paradoxical benefits of the last pandemic. *Int J Infect Dis.* 2006;10:4–13.
14. Harris JB, LaRocque RC, Charles RC, Muazumder RN, Khann AI, Bardhan PK. Cholera's western front. *Lancet.* 2010;376:1961–5.

Address for correspondence: Valery E.M. Beau De Rochars, 4052 Bald Cypress Way, Bin #A-12, Tallahassee, FL 32399, USA; email: igk9@cdc.gov



Knowledge, Attitudes, and Practices Related to Treatment and Prevention of Cholera, Haiti, 2010

Technical Appendix

The following pages show a household questionnaire that was pilot tested and administered to 405 households from 27 clusters from resources-limited areas of Cité Soleil, Delmas, Carrefour, and Pétion-Ville, Haiti. The questionnaire was part of a survey conducted during December 6–7 and 14–16, 2010, to assess the effectiveness of interventions implemented to prevent the spread of cholera and to improve specific response activities in these neighborhoods.

ENUMERATOR: _____
 DATE: (day, month, 2010) _____

SUPERVISOR: _____
 HOUSEHOLD CODE: _____

SURVEY ON KNOWLEDGE, ATTITUDES, AND PRACTICES RELATED TO TREATMENT AND PREVENTION OF CHOLERA, HAITI, 2010

Potopwens, Ayiti

Q#	QUESTION	RESPONSE
GENERAL		
G1	Name of commune	<u>G1COM</u> Name of Commune: _____
G2	Section Communale	<u>G2SECCOM</u> Section Communale: _____
G3	Localité	<u>G3LOCAL</u> Localité: _____
G4	House Code	<u>G4HHID</u> House Code : _____
G5	GPS Coordinates (North)	<u>G5GPSN</u> GPS Coordinates (North): _____
G6	GPS Coordinates (West)	<u>G6GPSW</u> GPS Coordinates (West): _____
DEMOGRAPHIC INFO		
I1	How old are you ?	<u>I1AGE</u> _____ (years)
I2	What sex ?	<u>I2SEX</u> 1. Female 2. Male
I3	How many people live in this house ?	<u>I3HHPPL</u> _____ (people)
I4	Is there a radio that works in this house ?	<u>I4RADIO</u> 1. Yes 2. No
I5	Is there a TV that works in this house ?	<u>I5TV</u> 1. Yes 2. No
I6	Is there a cell phone that works in this house ?	<u>I6CELL</u> 1. Yes 2. No
I7	Can the female chief of household read a sentence in Creole ? <i>(If yes, give her a sentence to read in Creole).</i>	<u>I7READ</u> 1. Reads easily 2. Reads with some difficulty 3. Cannot read 4. N/A, no female head of household home
I8	What's the last level of education completed by the female head of household ?	<u>I8FEDUC</u> 1. Did not go to school 2. Some primary school 3. Completed primary school 4. Some secondary school 5. Completed secondary school 6. University / higher education

ENUMERATOR: _____
 SUPERVISOR: _____

HOUSEHOLD CODE: _____

WATER – IN THE PAST / BEFORE CHOLERA		
W1	Before the cholera outbreak, what was your principle of drinking water? <i>(Circle only one response)</i>	<u>W1PRESOURCE</u> 1 CAMEP/Network 2 Water in CAMEP fountain 3 Kiosk 4 Bladder 5 Another water vendor 6 Borehole 7 Tank filled by truck 8 Open Well 9 Sachet 10 Rainwater 11 Basin Prive 12 Other (specify) _____
W2	Before cholera, did you drink water most of the time directly from the source, or did you do something to it before drinking it ? <i>(Circle only one response)</i>	<u>W2PRESAFE</u> 1. Drank water directly from source <i>(Go to W4)</i> 2. Treated water first
W3	What did you do to treat your drinking water ? <i>(Do not read ; circle all methods mentioned)</i>	<u>W3PRETRT</u> 1. Boiled water 2. Jif/Clorox 3. Aquatabs 4. PuR 5. Gadyen Dlo, or Dlo Lavi 6. Filter: _____ (type of filter) 7. Solar 8. Let water settle if murky 9. Other answer _____
WATER – NOW – AFTER CHOLERA OUTBREAK		
W4	Since cholera, what is your principle drinking water source ? <i>(Circle only one response).</i>	<u>W4SOURCE</u> 1 CAMEP/Network 2 Water in CAMEP fountain 3 Kiosk 4 Bladder 5 Another water vendor 6 Borehole 7 Tank filled by truck 8 Open Well 9 Sachet 10 Rainwater 11 Basin Prive 12 Other (specify) _____
W5	Since cholera, where else do you get drinking water ? <i>(Circle only one response)</i>	<u>W5OTHERSOURCE</u> 1 CAMEP/Network 2 Water in CAMEP fountain 3 Kiosk 4 Bladder 5 Another water vendor 6 Borehole 7 Tank filled by truck 8 Open Well

ENUMERATOR: _____
 SUPERVISOR: _____

HOUSEHOLD CODE: _____

		9 Sachet 10 Rainwater 11 Basin Prive 12 Other (specify
W6	Since cholera, do you drink your water directly or treat it most of the time?	<u>W6SAFE</u> 1. Drink Directly (Go to W7) 2. Treat it (Go to W6A)
W6A	How do you treat your water ?	<u>W6AHOWTREAT</u> 1. Boiled water 2. Jif/Clorox 3. Aquatabs 4. PuR 5. Gadyen Dlo, or Dlo Lavi 6. Filter: _____ (type of filter) 7. Solar 8. Let water settle if murky 9. Other answer
W7	Where do you get water for cooking, bathing, and housework ? <i>(Read the list ; circle each response mentioned)</i>	<u>W7HHWAT</u> 1 CAMEP/Network 2 Water in CAMEP fountain 3 Kiosk 4 Bladder 5 Another water vendor 6 Borehole 7 Tank filled by truck 8 Open Well 9 Sachet 10 Rainwater 11 Basin Prive 12 Other (specify

SANITATION

S1	Where do you usually defecate? <i>(Circle only one response)</i>	<u>S1LATRINE</u> 1. Latrine with cement slab 2. Latrine without cement slab 3. Trench Latrine 4. Canal or Open defecation(Go to K1) 5. Toilet Mobile (Go to K1) 6. Elevated toilet (Go to K1) 7. Private toilet 8. Plastic bag (Go to K1) 9. Other _____ (Go to K1)
S2	How many households share this latrine ?	<u>S2LATUSE</u> _____ (number of households)
S3	Where is the latrine located ?	<u>S3LATLOCATION</u> 1. In a camp 2. In a neighborhood 3. In a public location (school, hospital, etc) 4. In a private home 5. Other _____

KNOWLEDGE

ENUMERATOR: _____
 SUPERVISOR: _____

HOUSEHOLD CODE: _____

<p>K1</p>	<p>Can you tell me the symptoms of cholera ? Symptoms are signs that tell us that someone is sick, for example, coughing, headache, etc. (Do not read ; circle each response mentioned and ask what else after each repsons?).</p>	<p><u>K1SYMPTOMS</u> 1. Watery diarrhea 2. Diarrhea 3. Vomiting 4. Fever 5. Dehydration 6. No appetite 7. Fatigue 8. Stomach ache 9. Other _____ 10. Don't know</p>
<p>K2</p>	<p>Can you tell me how people can contract cholera ? (Do not read ; circle each response mentioned and ask what else ?).</p>	<p><u>K2CONTRACT</u> 1. Drinking contaminated or untreated water 2. Eating contaminated or undercooked food 3. Unpleasant odors 4. Flies 5. Not washing hands 6. Contact with someone sick with cholera or someone who died from cholera 7. Swimming 8. Other _____ 9. Unknown</p>
<p>K3</p>	<p>What's the best way for a health worker to share information with you and your neighbors about cholera ? (Read the list ; circle more than one response.)</p>	<p><u>K3REACH</u> 1. Doctor, nurse, other healthcare worker 2. SMS 3. TV 4. Newspaper 5. Printed flyers 6. Public health officials Radio 7. Community meeting 8. Church 9. Radio 10. Community health worker 11. Truck with megaphone 12. Other _____</p>
<p>K4</p>	<p>Please tell me all of the ways you know to protect yourself against cholera (Do not read ; circle all answers mentioned)</p>	<p><u>K4PROTECT</u> 1. Boil or treat your water 2. Use latrines 3. Wash hands with soap and water 4. Cook food well 5. Wash fruits and vegetables 6. Clean your home with bleach 7. Other _____</p>
<p>K5</p>	<p>If you thought someone in your family had cholera, where would you seek treatment ?</p>	<p><u>K5SEEKCARE</u> 1. Treat at home (GO to K5A) 2. Go to health facility(GO to K5B)</p>
<p>K5A</p>	<p>Why would you not seek care away from home ?</p>	<p><u>K5AWHYNOTSEEK</u> 1. Waiting to see if ORS works 2. No Security 3. Transportation not available 4. No money to pay for treatment</p>

ENUMERATOR: _____
 SUPERVISOR: _____

HOUSEHOLD CODE: _____

		5. Transportation not affordable 6. Because I drink ORS 7. I will try traditional healers first 8. No room at the treatment center (too much waiting) 9. Other _____
K5B	How long would you wait to go to the health center, hospital, or CTC ? What is the largest you would wait to go to the hospital/ health center/CTC ?	<u>K5BWHENSEEK</u> 1. Less than 2 hours 2. More than 2 hours 3. After one day 4. Don't know
K6	Has anyone in your home had cholera ?	<u>K6CHOLERA</u> 1. Yes 2. No (Go to DS1)
K7	Did the sick person take ORS or sugar salt solution?	<u>K7ORSTAKE</u> 1. Yes 2. No
K8	Where did the sick person seek treatment ? <i>(Circle each response mentioned).</i>	<u>K8WHERE</u> 1. Health center, clinic, hospital 2. CTC 3. Dispensary, pharmacy 4. Traditional healer : houngan, bòkò, 5. Other _____ 6. Did not seek treatment outside of the house 7. Don't know
DISTRIBUTION - SOAP		
DS1	In the past month, did you receive (for free or during a distribution) hand soap ? <i>If yes, how many bars of hand soap ?</i>	<u>DS1GOTSOAP</u> 1. Yes, _____ (bars of soap) 2. No
DS2	Have you purchased any hand soap since the cholera epidemic started ?	<u>DS2BUYSOAP</u> 1. Yes 2. No
DS3	Do you have handsoap or powered soap now ?	<u>DS3HANDSOAPNOW</u> 1. Yes 2. No
DS4	Do you use saop or detergent when you wash your hands ?	<u>DS4HANDSOAPCONFIRM</u> 1. Always 2. Sometimes 3. Never
DISTRIBUTION – ORS		
DO1	Do you have any ORS now home?	<u>DO1ORSNOW</u> 1. Yes 2. No
DO2	Do you know how to use/prepare ORS? <i>(Circle only one answer).</i>	<u>DO2INSTORS</u> 1. Yes 2. No (Go to DO5) 3. Don't know (Go to DO5)
DO3	How to prepare ORS, how much water do you mix with one sachet of ORS ? <i>(Do not read ; circle each response mentioned.)</i> <i>Choose one</i>	<u>WaterORS1</u> Small Coke Bottles <u>WaterORS2</u> Large Coke Bottles <u>WaterORS4</u> Other _____

ENUMERATOR: _____
 SUPERVISOR: _____

HOUSEHOLD CODE: _____

DO4	After you finish preparing a sugar-salt solution or ORS, how long can you keep it until it goes bad ?	<u>DO4HOWLONG</u> 1. Have to use it right away – within an hour 2. Within 5 hours 3. Within 24 hours 4. More than one day 5. Don't know
DO5	If you don't have ORS what else you can use ?	<u>DO5ORSELS</u> 1.Sugar-salt solution 2.Water 3.Juce 4.Other

DISTRIBISYON – TRETMAN DLO

DT1	Have you heard about any of these products : <i>(Read each choice and circle responses.)</i>	<u>DT1DLOLAVIDIST</u> Dlo Lavi 1. Yes 2. No <u>DT1AQUATABDIST</u> Aquatabs 1. Yes 2. No <u>DT1GADYENDLODIST</u> Gadyen Dlo 1. Yes 2. No <u>DT1JIF/CLOROXDIST</u> Jif/Clorox 1. Yes 2. No
------------	---	---

DISTRIBISYON - AQUATABS

DA1	In the past month did you receive Aquatabs ? <i>If so, How many tabs ?</i>	<u>DA1GOTAT</u> 1. Yes, _____ (tabs) 2. No
DA2	In the past month have you bought any Aquatabs ?	<u>DA2BOUGHTAQUATAB</u> 1. Yes 2. No
DA3	Do you know how to use Aquatabs ?	<u>DA3INSTAT</u> 1. Yes 2. No (Go to DA8) 3. Don't know (Go to DA8)
DA4	<i>How many pills of Aquatabs do you use for 5 gallons of water?</i>	<u>DA4NUMUSE</u> Number of Aquatabs : _____
DA5	<i>What size of Aquatabs do you use ?</i>	<u>DA5SIZEUSED</u> Size of Aquatabs : _____
DA6	<i>How much water do you use to treat water with Aquatabs every day?</i>	<u>DA6LITERSUSED</u> Liters of Water : _____
DA7	After you add Aquatabs to water, can you drink immediately or should you wait before drinking?	<u>DA7ATWAIT</u> 1. Drink right away (Go to DA8) 2. Let it sit (Go to DA7A) 3. Don't know (Go to DA8)
DA7A	How long should you let it sit ?	<u>DA7AHOWLONGSIT</u> Mintues : _____
DA8	If you had them, would you use Aquatabs to treat your drinking water ?	<u>DA8ATDRWAT</u> 1. Yes

ENUMERATOR: _____
 SUPERVISOR: _____

HOUSEHOLD CODE: _____

		2. No
DA9	Have you ever tasted water with Aquatabs ?	<u>DA9WTAERAQUATABS</u> 1. Yes 2. No (Go to DA10)
DA9A	What do you think of the taste of water treated with Aquatabs ? <i>(Circle just one response)</i>	<u>DA9ATTASTE</u> 1. Strong taste, I don't like it 2. Some taste, but it's fine 3. No taste 4. Never taste it
DA10	Do you think the water from the pipe (CAMEP) is safe to drink ?	<u>DA10CAMEPSAFE</u> 1. Yes 2. No 3. Don't Know
DA11	Do you think the water from a kiosk (Eau Miracle, etc) is safe to drink ?	<u>DA11KIOSKSAFE</u> 1. Yes 2. No 3. Don't Know
DA12	Do you think the water from a bladder or a tank is safe to drink ?	<u>DA12BLADDERSAFE</u> 1. Yes 2. No 3. Don't Know
DA13	Do you think the water from a borehole is safe to drink ?	<u>DA13BOREHOLESAFE</u> 1. Yes 2. No 3. Don't Know
DA14	Which source of water do you think is safe to drink? <i>(Do not read ; circle each response mentioned.)</i>	<u>DA14WATERSAFE</u> 1 CAMEP/Network 2 Water in CAMEP fountain 3 Kiosk 4 Bladder 5 Another water vendor 6 Borehole 7 Tank filled by truck 8 Open Well 9 Sachet 10 Rainwater 11 Basin Prive 12 Other (specify)
OBSERVATION		
O1	Can you show me how you wash your hands ? (Observe how the person washes the hands and circle the answers that correspond to the person does)	<u>O1HANDWASH</u> 1. Water only 2. Soap and water 3. Powdered or liquid detergent and water 4. Ashes and water 5. Dirt/sand/mud and water 6. Don't wash hands 7. Cannot demonstrate, no soap and/or water in home 8. Other _____
O2	What source did this water come from ? <i>(Circle only one response)</i>	<u>O2WATSOURCE</u> 1 CAMEP/Network 2 Water in CAMEP fountain

ENUMERATOR: _____
 SUPERVISOR: _____

HOUSEHOLD CODE: _____

		3 Kiosk 4 Bladder 5 Another water vendor 6 Borehole 7 Tank filled by truck 8 Open Well 9 Sachet 10 Rainwater 11 Basin Prive 12 Other (specify
03	Is the water container covered ?	<u>O3WATCOV</u> 1. Yes 2. No
04	Was this water treated with Aquatabs, Jif, or Clorox?	<u>O4WATTRT</u> 1. Yes 2. No
05	How long ago was it treated? <i>(Si tan plis yon jouneen, makè 24+.)</i>	<u>O5WHENTRT</u> _____ (hours)
06	Test and measure the chlorine level in the stored water <i>(Make X, si-l pa stoke dlo oubyen refize ; Makè 0 si pa koulè dlo-a pa chanje di tou).</i>	<u>O6CHLORINE</u> _____ mg/l