

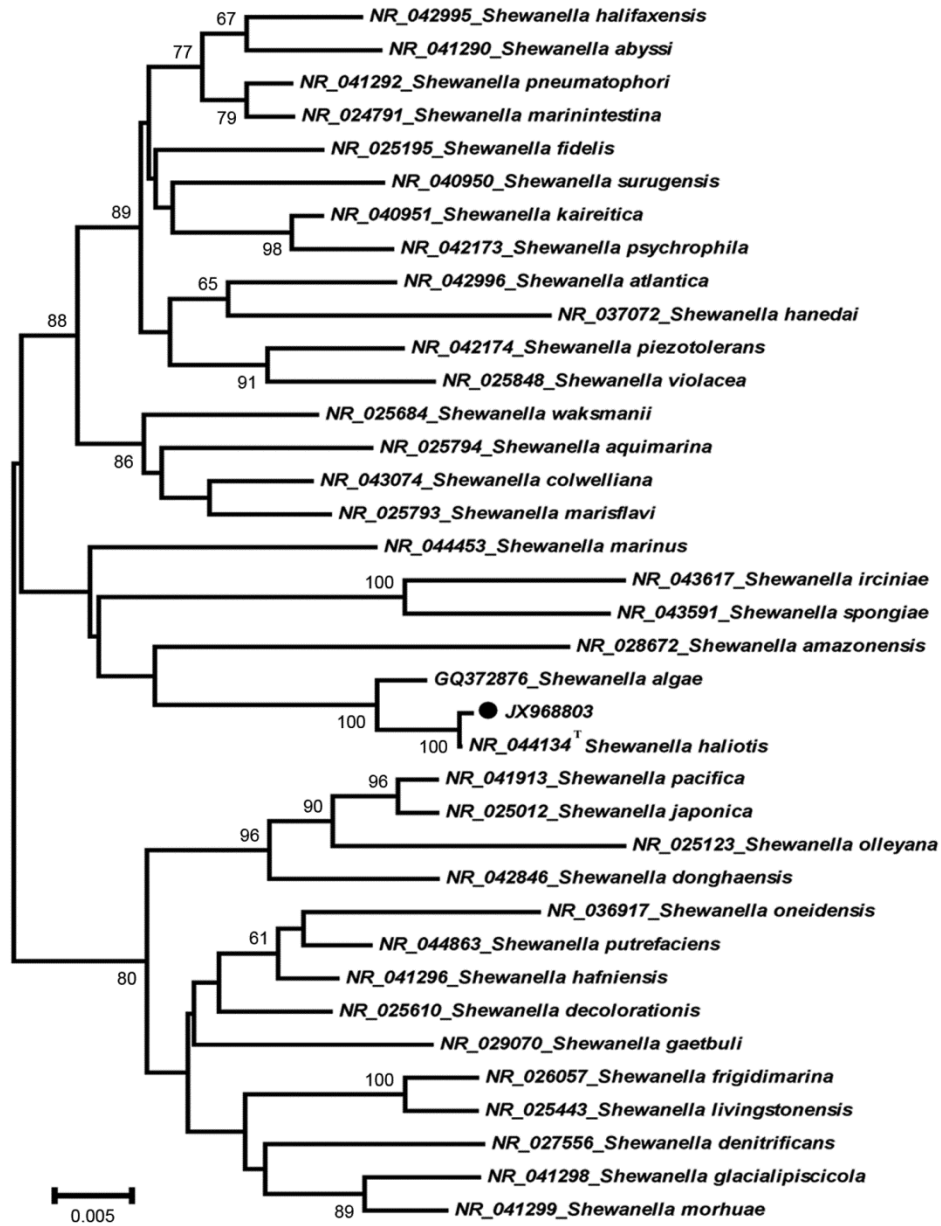
Shewanella haliotis Associated with Severe Soft Tissue Infection, Thailand, 2012

Technical Appendix

Specific *Shewanella* Consensus Primer Sets for 16S rRNA Gene Sequencing and Phylogenetic Analysis

Technical Appendix Table. Specific *Shewanella* consensus primer sets for 16S rRNA gene sequencing performed during investigation of soft tissue infection, Thailand, YEAR.

Round	Primer name	Sequence (5'→3')	Product (bp)
1	shew16s_99F	CGA GCG GCG GAC GGG TGA G	1,327
	shew16s_1426R	CCA CTC CCA TGG TGT GAC G	
2	shew16s_349F	GGA GGC AGC AGT GGG GAA	1,077
	shew16s_1426R	CCA CTC CCA TGG TGT GAC G	



Technical Appendix Figure. Phylogenetic analysis of *Shewanella* spp. 16S rRNA gene sequencing (1,077 base pairs). Closed circle indicates the strain in this study compared with the *S. haliotis* prototype species (NR_044134^T) and other representative species. Numbers at branch nodes are bootstrap values. Scale bar represents number of nucleotide substitutions per site.