

10. Otranto D, Sakru N, Testini G, Gürlü VP, Yakar K, Lia RP, et al. Case report: first evidence of human zoonotic infection by *Onchocerca lupi* (Spirurida, Onchocercidae). *Am J Trop Med Hyg.* 2011;84:55–8. <http://dx.doi.org/10.4269/ajtmh.2011.10-0465>

Address for correspondence: Carla Maia, Global Health and Tropical Medicine, Medical Parasitology Unit, Institute of Hygiene and Tropical Medicine, New University of Lisbon, Lisbon, Portugal; email: carlamaia@ihmt.unl.pt

Porcine Deltacoronavirus in Mainland China

Nan Dong, Liurong Fang, Songlin Zeng, Qianqian Sun, Huanchun Chen, Shaobo Xiao

Author affiliation: Huazhong Agricultural University, Wuhan, China (N. Dong, L. Fang, S. Zeng, Q. Sun, H. Chen, S. Xiao); The Cooperative Innovation Center for Sustainable Pig Production, Wuhan (L. Fang, H. Chen, S. Xiao)

DOI: <http://dx.doi.org/10.3201/eid2112.150283>

To the Editor: Porcine deltacoronavirus (PDCoV) was discovered in 2012, during a study to identify new coronaviruses in mammals and birds in Hong Kong (1). In February 2014, this novel porcine coronavirus was detected in pigs in Ohio, United States (2), and has since been reported in at least 17 US states (3–5). Concern regarding the epidemiology, evolution, and pathogenicity of this emerging virus is increasing. Recently, PDCoV was identified in South Korea (6). We report PDCoV in mainland China.

Since December 2010, a large-scale outbreak of diarrhea in suckling piglets has occurred on swine farms in mainland China (7). The causative agent was considered to be a variant of porcine epidemic diarrhea virus (PEDV) (8), and the role of PDCoV in the outbreak was not investigated at that time.

Using 2 pairs of specific primers to detect PDCoV, as described by Wang et al. (2), we tested 215 intestinal or fecal samples collected at various times during 2004–2014 from piglets with clinical diarrhea in Anhui, Guangxi, Hubei, and Jiangsu provinces, mainland China (online Technical Appendix Table 1, <http://wwwnc.cdc.gov/EID/article/21/12/15-0283-Techapp1.pdf>). All samples were submitted from commercial pig farms to our laboratory for enteropathogen detection. Of these samples, 165 (124 from Hubei, 41 from Jiangsu) had been collected in 2014, and 50 (40 from Jiangsu, 6 from Anhui, 4 from Guangxi) had been collected during 2004–2013 and preserved in our laboratory. The 215 samples were simultaneously tested for PEDV and transmissible gastroenteritis virus (TGEV) by using the primers listed in online Technical Appendix Table 2. Of the samples tested, 14 (6.51%) were positive for PDCoV,

110 (51.2%) were positive for PEDV, and 5 (2.3%) were positive for TGEV. Of the 14 PDCoV-positive samples, 7 (50%) were also positive for PEDV; 2 of the 215 samples were co-infected with PEDV, TGEV, and PDCoV (online Technical Appendix Table 1). Previous studies have shown that prevalence of PDCoV in the midwestern United States in 2014 was high (30%) and that PDCoV co-infections with other pathogens (such as PEDV and rotavirus) are more common (78% of PDCoV infections) (4). At the same time in mainland China, the rate of PDCoV positivity was lower (7.27%), whereas that of PEDV was higher (52.73%), suggesting that PEDV remains the main causative agent of piglet diarrhea diseases in mainland China. Similarly, in South Korea in 2014, only 2 PDCoV-positive samples were detected in 113 samples of diarrhea from pigs (6).

We also examined the collection dates and geographic locations of the PDCoV-positive samples and found that PDCoV was detected in pigs in Hubei (8/124), Jiangsu (4/81), and Anhui (2/6) Provinces. However, all samples from pigs in Guangxi Province were negative for PDCoV. All PDCoV-positive samples from Hubei and Jiangsu Provinces had been collected in 2014, whereas the 2 PDCoV-positive samples from Anhui Province had been collected in 2004.

Among the PDCoV-positive samples, we selected 3 for complete genome sequencing with 16 pairs of overlapping primers, as described previously (2): one (CHN-AH-2004) collected from Anhui Province in 2004, one (CHN-HB-2014) from Hubei Province in 2014, and one (CHN-JS-2014) from Jiangsu Province in 2014. These complete genome sequences have been deposited in GenBank under accession nos. KP757890 (CHN-AH-2004), KP757891 (CHN-HB-2014), and KP757892 (CHN-JS-2014). The complete genome sequences of 3 PDCoV strains from pigs in mainland China shared high nucleotide identities ($\geq 98.9\%$) with all previously reported PDCoV strains. Previous studies found that Hong Kong strain HKU 15-44 and all PDCoV strains from the United States and South Korea have a 3-nt insertion in the spike gene, which is not present in Hong Kong strain HKU 15-155 (2–6). This insertion is also present in CHN-AH-2004, whereas CHN-HB-2014 and CHN-JS-2014, like HKU 15-155, lack this insertion (online Technical Appendix Figure).

Although all reported PDCoV strains from China shared high similarity with each other, a phylogenetic tree based on all available complete PDCoV genome sequences showed that these PDCoV strains clearly cluster in different clades (Figure). Strain CHN-JS-2014 shares an ancestor with the strains from the United States and South Korea. CHN-AH-2004 and HKU15-44 share a common ancestor, and CHN-HB-2014 shares a common ancestor with CHN-AH-2004 and HKU15-44.

As an emerging virus, PDCoV has been poorly understood. Our data suggest that PDCoV has existed in

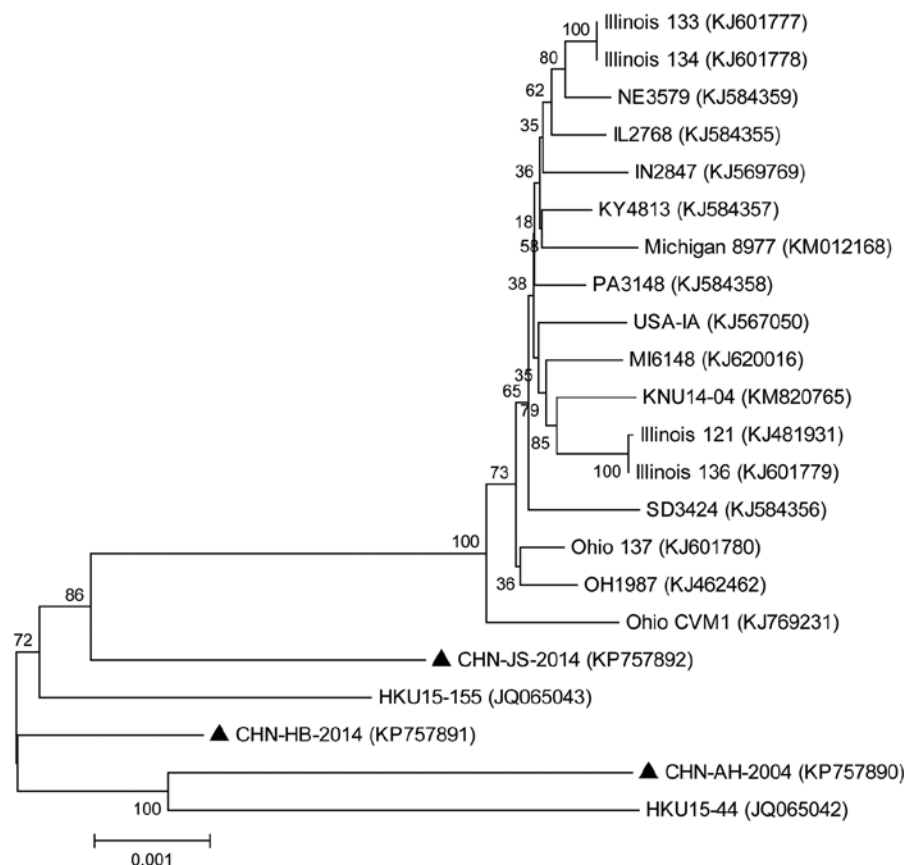


Figure. Phylogenetic tree of all complete porcine deltacoronavirus genome sequences available in February 2015. The phylogenetic tree was constructed by using the distance-based neighbor-joining method in MEGA 6.06 software (<http://www.megasoftware.net/>). Bootstrap values were calculated with 1,000 replicates. The number on each branch indicates bootstrap values. The reference sequences obtained from GenBank are indicated by strain abbreviations and GenBank accession numbers. Triangles indicate the 3 strains from mainland China. Scale bar indicates nucleotide substitutions per site.

mainland China for at least 11 years. Although the rate of PDCoV infection detected in mainland China in this study was relatively low, the results may not accurately reflect the prevalence of PDCoV in mainland China because the tested samples were collected from only 4 provinces. Extensive surveillance is required to define the epidemiology and evolution of PDCoV in mainland China. Recent confirmation that PDCoV is enteropathogenic in gnotobiotic pigs (9) highlights the need for effective vaccines against this emerging virus.

This work was supported by the Key Technology R&D Programme of China (2015BAD12B02), the Natural Science Foundation of Hubei Province (2014CFA009), and the Fundamental Research Funds for the Central Universities (2013PY043).

References

1. Woo PC, Lau SK, Lam CS, Lau CC, Tsang AK, Lau JH, et al. Discovery of seven novel mammalian and avian coronaviruses in the genus *Deltacoronavirus* supports bat coronaviruses as the gene source of *Alphacoronavirus* and *Betacoronavirus* and avian coronaviruses as the gene source of *Gammacoronavirus* and *Deltacoronavirus*. *J Virol*. 2012;86:3995–4008. <http://dx.doi.org/10.1128/JVI.06540-11>
2. Wang L, Byrum B, Zhang Y. Detection and genetic characterization of deltacoronavirus in pigs, Ohio, USA, 2014. *Emerg Infect Dis*. 2014;20:1227–30. <http://dx.doi.org/10.3201/eid2007.140296>
3. Wang L, Byrum B, Zhang Y. Porcine coronavirus HKU15 detected in 9 US states, 2014. *Emerg Infect Dis*. 2014;20:1594–5. <http://dx.doi.org/10.3201/eid2009.140756>
4. Marthaler D, Raymond L, Jiang Y, Collins J, Rossow K, Rovira A. Rapid detection, complete genome sequencing, and phylogenetic analysis of porcine deltacoronavirus. *Emerg Infect Dis*. 2014; 20:1347–50. <http://dx.doi.org/10.3201/eid2008.140526>
5. Li G, Chen Q, Harmon KM, Yoon KJ, Schwartz KJ, Hoogland MJ, et al. Full-length genome sequence of porcine deltacoronavirus strain USA/IA/2014/8734. *Genome Announc*. 2014;2:e00278–14. <http://dx.doi.org/10.1128/genomeA.00278-14>
6. Lee S, Lee C. Complete genome characterization of Korean porcine deltacoronavirus strain KOR/KNU14-04/2014. *Genome Announc*. 2014;2:e01191–14. <http://dx.doi.org/10.1128/genomeA.01191-14>
7. Sun RQ, Cai RJ, Chen YQ, Liang PS, Chen DK, Song CX. Outbreak of porcine epidemic diarrhea in suckling piglets, China. *Emerg Infect Dis*. 2012;18:161–3. <http://dx.doi.org/10.3201/eid1801.111259>
8. Bi J, Zeng S, Xiao S, Chen H, Fang L. Complete genome sequence of porcine epidemic diarrhea virus strain AJ1102 isolated from a suckling piglet with acute diarrhea in China. *J Virol*. 2012; 86:10910–1. <http://dx.doi.org/10.1128/JVI.01919-12>
9. Jung K, Hu H, Eyerly B, Lu Z, Chepogeno J, Saif LJ. Pathogenicity of 2 porcine deltacoronavirus strains in gnotobiotic pigs. *Emerg Infect Dis*. 2015;21:650–4. <http://dx.doi.org/10.3201/eid2104.141859>

Address for correspondence: Shaobo Xiao, State Key Laboratory of Agricultural Microbiology, College of Veterinary Medicine, Huazhong Agricultural University, Wuhan 430070, China; email: vet@mail.hzau.edu.cn

Porcine Deltacoronavirus in Mainland China

Technical Appendix

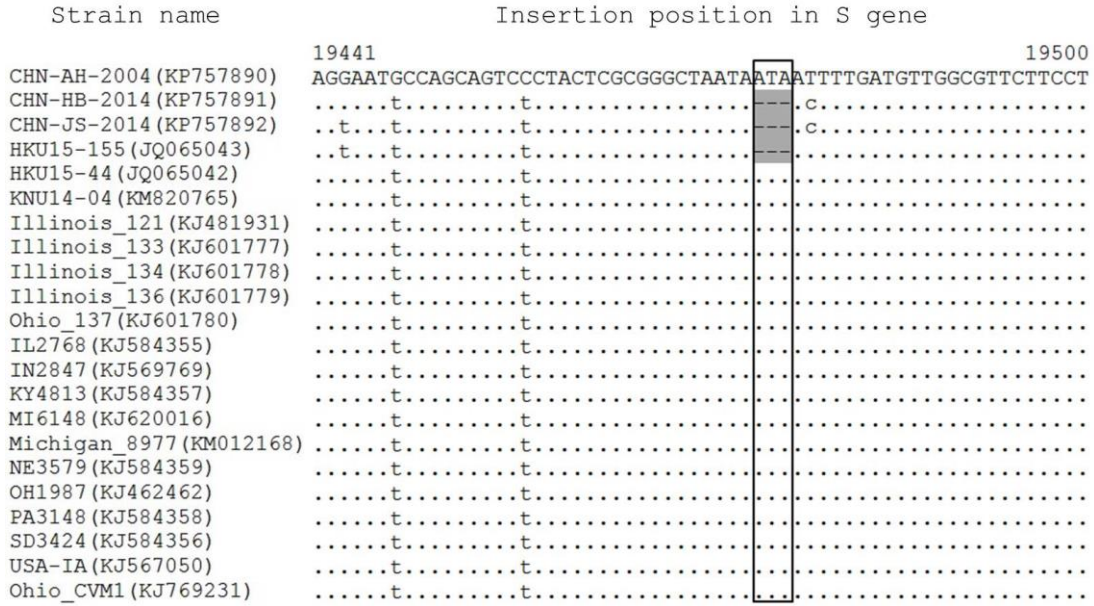
Technical Appendix Table 1. Detection of porcine deltacoronavirus (PDCoV), porcine epidemic diarrhea virus (PEDV), transmissible gastroenteritis virus (TGEV) in samples from different provinces of mainland China*

Province	No. samples positive /total no. samples tested		
	PDCoV	PEDV	TGEV
Hubei	8/124	63/124	0/124
Jiangsu	4/81	38/81	2/81
Anhui	2/6	6/6	3/6
Guangxi	0/4	3/4	0/4
All provinces	14/215	110/215	5/215

*A total of 215 samples from 4 provinces of mainland China were detected for PDCoV, PEDV, TGEV, and 165 samples were collected in 2014, 50 were previous samples preserved in our laboratory dated from 2004-2013.

Technical Appendix Table 2. Primers used for detection of porcine epidemic diarrhea virus (PEDV) and transmissible gastroenteritis virus (TGEV).

Primer identification	Primer sequence (5'- 3')	Size (bps)
PEDV-F	TCTGCGTTCTTGTATGGTGTC	595
PEDV-R	TCCTGAAAAGTACAGAAGCC	
TGEV-F	AGATGGAGTTGTCTGGGTT	739
TGEV-R	ATCTTGCTCTGACCTTCT	



Technical Appendix Figure. Alignment of partial sequences of the spike gene of porcine deltacoronavirus (PDCoV). A dot indicates that the nucleotide exactly matches the consensus. A dash indicates that the nucleotide deletes compared to the reference sequence. The position for the 3-nt insertion is highlighted by a box.