

# Geographic Range Expansion for the Rat Lungworm in North America

Emily M. York, James P. Creecy,  
Wayne D. Lord, William Caire

Using quantitative PCR analysis and DNA sequencing, we provide evidence for the presence of the rat lungworm (*Angiostrongylus cantonensis*) in Oklahoma, USA, and identify a potentially novel rat host (*Sigmodon hispidus*). Our results indicate a geographic range expansion for this medically and ecologically relevant parasite in North America.

Emerging infectious diseases negatively impact humans and wildlife, causing disease outbreaks and deaths and local and global extinctions (1). Zoonotic disease emergence or re-emergence results from numerous factors (e.g., globalization of trade, increased interaction of humans and animals, anthropogenic climate change) that function independently or synergistically (2,3). Consequently, the means by which parasitic zoonoses are studied must be constantly advanced to promote identification, control, and prevention of outbreaks.

The rat lungworm, *Angiostrongylus (Parastrongylus) cantonensis*, causes eosinophilic meningitis in humans (4) and various disease manifestations (meningoencephalitis, neurologic disorders) in atypical host species, including wildlife and captive animals (5). Transmission of these worms occurs by ingestion of third-stage larvae in raw or undercooked intermediate or paratenic hosts (6). Although variable among geographic regions and within host species, the prevalence of rat lungworms might be high under favorable conditions (7).

The occurrence of *A. cantonensis* rat lungworms has been documented worldwide, and its distribution has been attributed largely to the spread of intermediate molluscan host species (e.g., *Achantina fulica*) and definitive rodent host species (e.g., *Rattus* spp.) (8). Moreover, host specificity of rat lungworms is highly plastic, which contributes to its continuous geographic expansion (4). These factors indicate that the rat lungworm is an emerging zoonotic pathogen of concern to humans and wildlife, and therefore provides an excellent opportunity to evaluate the sensitivity and effectiveness of epidemiologic surveying techniques.

## The Study

We evaluated the current distribution and potential spread of the rat lungworm within areas of the Gulf Coast region

and midwestern United States by sampling rodent populations in regions of Louisiana and Oklahoma that were predicted by an ecologic niche model to contain suitable and unsuitable habitat (9). We used a quantitative PCR (qPCR) TaqMan assay (Life Technologies, Foster City, CA, USA) (10) to test for the parasite in tissue samples and further evaluated these samples through DNA sequencing analysis.

We trapped animals during the spring, summer, and fall months during 2010–2012. A total of 42 rodents and 3 shrews were collected from McCurtain County in southeastern Oklahoma, and 47 rodents were collected in Louisiana (online Technical Appendix, <http://wwwnc.cdc.gov/EID/article/21/7/14-1980-Techapp.pdf>). We also obtained 56 *Rattus norvegicus* rat brain and lung tissue samples from the City of New Orleans Mosquito, Termite, and Rodent Control Board. Blood, lung, and brain tissue samples were collected from the rodents. Flotation was performed on all 148 lung samples, and all samples were negative for adult *A. cantonensis* rat lungworms.

Known adult rat lungworms were used as controls for molecular analyses (online Technical Appendix). Cellular DNA was extracted from rodent blood and brain samples. We tested for rat lungworm internal transcribed spacer 1 (ITS1) DNA by using a TaqMan qPCR on an ABI 7500 system (10). A total of 134 blood samples and 137 brain samples contained DNA suitable for analysis. After qPCR, 34 of the 271 total tissue samples were classified as putatively positive for rat lungworm and sequenced, generating a 267-bp fragment of the ITS1 region (online Technical Appendix).

On the basis of DNA sequencing, 3 brain samples were identified as containing *A. cantonensis* DNA (GenBank accession nos. KP231729, KP231728, and KP231727). These brain tissue samples were obtained from 3 rodents (host catalog nos. 32, 70, and 76), which were identified as 1 Hispid cotton rat (*Sigmodon hispidus*) and 2 brown rats (*Rattus norvegicus*), respectively (Table 1). A comparison of the 3 brain samples with those in GenBank by BLAST analysis (<http://blast.ncbi.nlm.nih.gov/Blast.cgi>) showed a match with rat lungworm (GenBank accession nos. GU587762.1 and GU587759.1) (Table 2).

All sequences were aligned by using MUSCLE in MEGA 5.2 (<http://www.megasoftware.net/>), manually inspected for consensus, and compared with the 267-bp fragment generated from the known sample of rat lungworm. Maximum-likelihood phylogenetic analysis was performed by using sequence data for the ITS1 region of *A. cantonensis* (GenBank accession no. GU587759.1), 2 closely related species, *A. vasorum*

Author affiliation: University of Central Oklahoma, Edmond, Oklahoma, USA

DOI: <http://dx.doi.org/10.3201/eid2107.141980>

**Table 1.** DNA sequences generated from 3 rat brain samples positive for *Angiostrongylus cantonensis* rat lungworms, United States\*

Rat host species	Trapping location	Host catalog no.	Sequence, 5'→3'
<i>Sigmodon hispidus</i>	Red Slough WMA, OK	32	TTCATGGATGGCGAACTGATAGTATCATCGCATATCTACTATACGCAT GTGACACCTGATTGACAGGAAATCTTAATGACCCAAGTATAATGTTTC AATGGGCGCCAACGTAGCAACAGAACAGTTTTTTCACACGTGAAAATG TGAACGAGATACACAGGATGtatatataTATATATATATATACACATA TATRTGTGTRTGGAAATAGATATACTAKCTTCAGMGAKGRWKCGSGY GATTCGCGTATCTAAGAAAAACACA
<i>Rattus norvegicus</i>	New Orleans, LA	70	TTCATGGATGGCGAACTGATAGTGTATCGCATATCTACTATACGCA TGTGACACCTGATTGACAGGAAATCTTAATGACCCAAGTATAATGTTT CAATGGGCGCCAACGTAGCAACAGAACAGTTTTTTCACACGTGAAAA TGTGGAACGAGATACACAGGATGTATATATATATATATACACATAT ATATGTGTATGGAAATTGATATACTAGCTTCAGCGATGGATCGGTGCG ATTCGCGTATCGATGAAAAACGCATCTA
<i>Rattus norvegicus</i>	New Orleans, LA	76	TTCATGGATGGCGAACTGATAGTATCATCGCATATCTACTATACGCAT GTGACACCTGATTGACAGGAAATCTTAATGACCCAAGTATAATGTTTC AATGGGCGCCAACGTAGCAACAGAACAGTTTTTTCACACGTGAAAAT GTGGAACGAGATACACAGGATGTATATATATATATATATACACATATA TATGTGTATGGAAATTGATATACTAGCTTCAGCGATGGATCGGTGCGA TTCGCGTATCGATGAAAAACGCAGCTA

\*WMA, wildlife management area.

(the French heartworm, GU733324.1) and *A. costaricensis* (a parasitic nematode, (GU587745.1), and sequences obtained from the rodent hosts. Maximum-likelihood phylogenetic analysis grouped sequences from rat hosts 32, 70, and 76 with *A. cantonensis* with high bootstrap support (Figure).

**Conclusions**

Because the rat lungworm poses a major health risk to humans and wildlife worldwide, more work is needed to shed light on the location, dispersal, and influence of this parasite in new geographic regions. Although previous reports document rat lungworms in the Gulf Coast region of the United States (5,11), little is understood regarding their prevalence within definitive hosts and their dispersal throughout the southeastern United States. As expected, our analysis indicated that *R. norvegicus* rats from Louisiana harbored rat lungworms. Positive samples were collected from densely populated areas with high tourist activity, thereby increasing the risk for transmission to humans. Moreover, rat lungworms were identified outside their known habitat and in a new rat host species (*S. hispidus*) in Oklahoma, an area predicted to lack suitable habitat for the parasite (9). Our results provide a new perspective on the distribution of rat lungworms in the United States and indicate a northward range expansion that substantially increases the risk for disease spread within humans and wildlife.

Because endemic and novel pathogens require different and highly specialized disease management strategies,

it is crucial to determine whether a pathogen is novel or endemic (12). Previous work has described the *A. cantonensis* rat lungworm as a novel pathogen in the southeastern United States. However, it is now characterized as endemic to this region, and our results strongly support this notion (11). Such changes in the epidemiologic classification of rat lungworms accentuate the need for techniques that monitor the extent to which parasites infiltrate new geographic areas and potentially pose threats to humans and native wildlife. One such threat includes an increasing prevalence of angiostrongyliasis, which should receive increased scrutiny in patients with eosinophilic meningitis from localities characterized by paratenic and intermediate hosts.

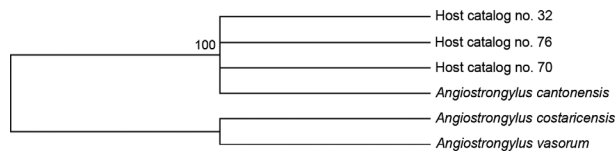
Rat lungworm was found in a previously undocumented mammalian host, *S. hispidus* rats, which strongly suggests that this parasite is an endemic pathogen. Although vegetation is their primary food source, *S. hispidus* rats will eat invertebrates (13). Whether these rats directly (by intentional consumption of host) or indirectly (by consumption of host or free third-stage larvae on vegetation) consume the parasite, we cannot rule out the possibility that acquisition of the parasite could occur in this species and enable further range expansion for rat lungworms. *S. hispidus* rats are a known host for another closely related *Angiostrongylus* species, *A. costaricensis*, which lends additional support for the notion that *S. hispidus* rats might act as a host for rat lungworms. Alternatively, *S. hispidus* rats might simply be an accidental/dead end host for this

**Table 2.** BLAST\* results for sequences from 3 rat brain samples, United States†

Host catalog no.	Rat host species	Trapping location	Match, %	Coverage, %	e value
32	<i>Sigmodon hispidus</i>	Red Slough WMA, OK	92	98	5 × 10 <sup>-105</sup>
70	<i>Rattus norvegicus</i>	New Orleans, LA	99	100	3 × 10 <sup>-130</sup>
76	<i>R. norvegicus</i>	New Orleans, LA	99	100	1 × 10 <sup>-133</sup>

\*http://blast.ncbi.nlm.nih.gov/Blast.cgi

†WMA, wildlife management area.



**Figure.** Maximum-likelihood bootstrap consensus phylogenetic tree showing the relationship between rat lungworm sequences generated in this study and other *Angiostrongylus* spp., United States. Tree was generated by using a Tamura 3-parameter model. Value along the branch is a bootstrap value.

parasite. Although wildlife might become infected with the parasite, not all wildlife are definitive hosts (5,11). Additional field and laboratory studies will clarify the role that *S. hispidus* rats play in the spread of the rat lungworm.

Because many terrestrial species remain taxonomically undescribed, there is strong potential for continual emergence of unknown pathogens worldwide (14). Global travel, human encroachment into wildlife habitat, and climate change will influence distribution and emergence of disease (2,15). By incorporating field epidemiology with molecular genetic techniques to determine the geographic distribution of pathogens, major advances can be made in preventing the spread of wildlife diseases to human populations. Our results illustrate this point and highlight the need for future work to incorporate and refine these techniques and their application to epidemiology and wildlife disease surveillance.

### Acknowledgments

We thank Joshua York, Erica Judd, Elizabeth O'Bannon, and Michelle Haynie for helpful comments on earlier drafts of the manuscript and technical support; Mark Eberhard for providing adult *A. cantonensis* rat lungworms; the City of New Orleans Mosquito, Termite, and Rodent Control Board for supplying samples and additional resources; and John Cross for being the inspiration for this project.

This study was supported by the Office of Research and Grants, the W. Roger Webb Forensic Science Institute, and the Department of Biology at the University of Central Oklahoma.

Mrs. York is an integrated pest management and collections specialist at the University of Oklahoma Sam Noble Museum of Natural History. Her research interests include infectious disease surveillance, host-parasite ecology, and animal behavior/interactions.

### References

1. Daszak P, Cunningham AA, Hyatt AD. Emerging infectious diseases of wildlife—threats to biodiversity and human health.

Science. 2000;287:443–9. <http://dx.doi.org/10.1126/science.287.5452.443>

2. Bengis RG, Leighton FA, Fischer JR, Artois M, Morner T, Tate CM. The role of wildlife in emerging and re-emerging zoonoses. *Rev Sci Tech*. 2004;23:497–511.
3. Patz JA, Graczyk TK, Geller N, Vittor AY. Effects of environmental change on emerging parasitic diseases. *Int J Parasitol*. 2000;30:1395–405. [http://dx.doi.org/10.1016/S0020-7519\(00\)00141-7](http://dx.doi.org/10.1016/S0020-7519(00)00141-7)
4. Prociw P, Spratt DM, Carlisle MS. Neuro-angiostrongyliasis: unresolved issues. *Int J Parasitol*. 2000;30:1295–303. [http://dx.doi.org/10.1016/S0020-7519\(00\)00133-8](http://dx.doi.org/10.1016/S0020-7519(00)00133-8)
5. Duffy MS, Miller C, Kinsella J, Lahunta A. *Parastrongylus cantonensis* in a nonhuman primate, Florida. *Emerg Infect Dis*. 2004;10:2207–10. <http://dx.doi.org/10.3201/eid1012.040319>
6. Wang QP, Lai DH, Zhu XQ, Chen XG, Lun ZR. Human angiostrongyliasis. *Lancet Infect Dis*. 2008;8:621–30. [http://dx.doi.org/10.1016/S1473-3099\(08\)70229-9](http://dx.doi.org/10.1016/S1473-3099(08)70229-9)
7. Lindo JF, Waugh C, Hall J, Cunningham-Myrie C, Ashley D, Eberhard M, et al. Enzootic *Angiostrongylus cantonensis* in rats and snails after an outbreak of human eosinophilic meningitis, Jamaica. *Emerg Infect Dis*. 2002;8:324–6. <http://dx.doi.org/10.3201/eid0803.010316>
8. Kliks MM, Palumbo N. Eosinophilic meningitis beyond the Pacific Basin: the global dispersal of a peridomestic zoonosis by *Angiostrongylus cantonensis*, the nematode lungworm of rats. *Soc Sci Med*. 1992;34:199–212. [http://dx.doi.org/10.1016/0277-9536\(92\)90097-A](http://dx.doi.org/10.1016/0277-9536(92)90097-A)
9. York EM, Butler CJ, Lord WD. Global decline in suitable habitat for *Angiostrongylus* (= *Parastrongylus*) *cantonensis*: the role of climate change. *PLoS ONE*. 2014;9:e103831. <http://dx.doi.org/10.1371/journal.pone.0103831>
10. Qvarnstrom Y, Silva A, Teem J, Hollingsworth R, Bishop H, Graeff-Teixeira C, et al. Improved molecular detection of *Angiostrongylus cantonensis* in molluscs and other environmental sample with a species-specific ITS1-based TaqMan assay. *Appl Environ Microbiol*. 2010;76:5287–9. <http://dx.doi.org/10.1128/AEM.00546-10>
11. Kim DY, Stewart T, Bauer R, Mitchell M. *Parastrongylus* (= *Angiostrongylus*) *cantonensis* now endemic in Louisiana. *J Parasitol*. 2002;88:1024–6. [http://dx.doi.org/10.1645/0022-3395\(2002\)088\[1024:PACNEI\]2.0.CO;2](http://dx.doi.org/10.1645/0022-3395(2002)088[1024:PACNEI]2.0.CO;2)
12. Rachowicz LJ, Hero JM, Alford RA, Taylor JW, Morgan JAT, Vredenburg VT, et al. The novel and endemic pathogen hypotheses: competing explanations for the origin of emerging infectious diseases of wildlife. *Conservation Biology*. 2005;19:1441–8. <http://dx.doi.org/10.1111/j.1523-1739.2005.00255.x>
13. Whitaker JO Jr. National Audubon Society field guide to North American mammals. New York: Alfred A. Knopf, Inc.; 1980. p. 745.
14. Mora C, Tittensor DP, Adl S, Simpson AG, Worm B. How many species are there on Earth and in the ocean? *PLoS Biol*. 2011;9:e1001127. <http://dx.doi.org/10.1371/journal.pbio.1001127>
15. Cunningham AA. A walk on the wild side—emerging wildlife diseases. *BMJ*. 2005;331:1214–5. <http://dx.doi.org/10.1136/bmj.331.7527.1214>

Address for correspondence: Emily M. York, Sam Noble Oklahoma Museum of Natural History, University of Oklahoma, 2401 Chautauqua Ave, Norman, OK 73072, USA; email: [eyork@ou.edu](mailto:eyork@ou.edu)

# Geographic Range Expansion for Rat Lungworm in North America

## Technical Appendix

**Technical Appendix Table 1.** Location, species, and number of mammals collected from each area that were tested for *Angiostrongylus cantonensis* rat lungworms, United States

Trapping location	Species	Common name	No. caught
McCurtain County, OK	<i>Neotoma floridana</i>	Eastern wood rat	2
McCurtain County, OK	<i>Blarina carolinensis</i>	Southern short-tailed shrew	3
McCurtain County, OK	<i>Oryzomys palustris</i>	Marsh rice rat	2
McCurtain County, OK	<i>Peromyscus leucopus</i>	White-footed mouse	1
McCurtain County, OK	<i>Reithrodontomys fulvescens</i>	Fulvous harvest mouse	7
McCurtain County, OK	<i>Sigmodon hispidus</i>	Hispid cotton rat	30
New Orleans Parish, LA	<i>Rattus norvegicus</i>	Brown rat	36
East Baton Rouge Parish, LA	<i>Rattus</i>	Black rat	3
Calcasieu Parish, LA	<i>Rattus norvegicus</i>	Brown rat	8

**Technical Appendix Table 2.** DNA sequence fragments of the ITS1 region generated from a known *Angiostrongylus cantonensis* rat lungworm specimen, United States \*

Region	Sequence, 5'→3'
Species-specific region, 105 bp	TTTCATGGATGGCGAACTGATAGTATCATCGCATATATACTATACGCATGTGACACCTGAT TGACAGGAAATCTTAATGACCCAAGTATAATGTTTCAATGGGCGC
267-bp fragment used in phylogenetic analysis	TTTCATGGATGGCGAACTGATAGTATCATCGCATATATACTATACGCATGTGACACCTGATT GACAGGAAATCTTAATGACCCAAGTATAATGTTTCAATGGGCGCCAACGTAGCAACAGAA CAGTTTTTCTACACGTGAAAATGTGGAACGAGATACACAGGATGTATATATATATATAC ACATATATATATGTGTATGGAAATTGATATACTAGCTTCAGCGATGGATCGGTTCGATTCCG GTATCGATGAAAAACGCATCTAAA

\*ITS1, internal transcribed spacer 1.

**Technical Appendix Table 3.** Presence of *Angiostrongylus cantonensis* DNA in tissue types from host species, United States

Host species	Common name	Tissue type	No. samples positive/no. samples screened
<i>Rattus norvegicus</i>	Brown rat	Brain	2/97
		Blood	0/98
		Lung	0/100
<i>Rattus</i>	Black rat	Brain	0/3
		Blood	0/3
		Lung	0/3
<i>Sigmodon hispidus</i>	Hispid cotton rat	Brain	1/27
		Blood	0/26
		Lung	0/30
<i>Neotoma floridana</i>	Eastern wood rat	Brain	0/2
		Blood	0/2
		Lung	0/2
<i>Oryzomys palustris</i>	Marsh rice rat	Brain	0
		Blood	0
		Lung	0/2
<i>Peromyscus leucopus</i>	White-footed mouse	Brain	0/1
		Blood	0/1
		Lung	0/1
<i>Reithrodontomys fulvescens</i>	Fulvous harvest mouse	Brain	0/7
		Blood	0/4
		Lung	0/7

Host species	Common name	Tissue type	No. samples positive/no. samples screened
<i>Blarina carolinensis</i>	Southern short-tailed shrew	Brain	0
		Blood	0
		Lung	0/3