

---

# African Buffalo Movement and Zoonotic Disease Risk across Transfrontier Conservation Areas, Southern Africa

Alexandre Caron, Daniel Cornelis, Chris Foggin, Markus Hofmeyr, Michel de Garine-Wichatitsky

We report on the long-distance movements of subadult female buffalo within a Transfrontier Conservation Area in Africa. Our observations confirm that bovine tuberculosis and other diseases can spread between buffalo populations across national parks, community land, and countries, thus posing a risk to animal and human health in surrounding wildlife areas.

---

Since the early 2000s in southern Africa, Transfrontier Conservation Areas (TFCAs) have been created to promote biodiversity conservation and local development (1). Increased connectivity between protected areas is designed to promote wildlife movement, ecosystem functioning, and genetic exchange and lead to increased wildlife populations, which should benefit communities living in these areas (e.g., through tourism and sustainable use of natural resources). Small-scale crop and livestock production are the main livelihood options for poor farmers living in communal lands in TFCAs. The extensive wildlife–livestock–human interface areas in TFCAs potentially result in human–wildlife conflicts, including crop destruction by wildlife, competition for resources between wild and domestic ungulates, livestock predation by wild carnivores, and poaching of wildlife; these conflicts are likely to increase as wildlife populations expand (2). The potential for the emergence and spread of infectious diseases is also of concern because of increased contact between wild and domestic hosts (3,4).

The Great Limpopo TFCA (GLTFCA) was created in 2002 and straddles Mozambique, South Africa, and Zimbabwe. It includes the Limpopo, Kruger, and Gonarezhou National Parks (NPs) and other land-use types surrounding the parks (Figure 1). The African buffalo (*Syncerus caffer caffer*) population in Kruger NP is known to maintain

animal diseases, including zoonoses such as bovine tuberculosis (bTB) and brucellosis. Buffalo are also suspected of playing a role in the epidemiology of Rift Valley fever (5). In 2009, a bTB strain related to the strain occurring in buffalo in northern Kruger NP was detected in buffalo in Gonarezhou NP, suggesting a recent spread from Kruger NP in South Africa to Gonarezhou NP in Zimbabwe (6). Although possible explanations were proposed for this transfrontier spread, including direct transmission from buffalo to buffalo or from an unidentified wild or domestic ungulate species to buffalo (6), these modes of transmission were not supported by firm data. We report preliminary results from telemetry studies and visual observations of individually identified African buffalo within the GLTFCA.

## The Study

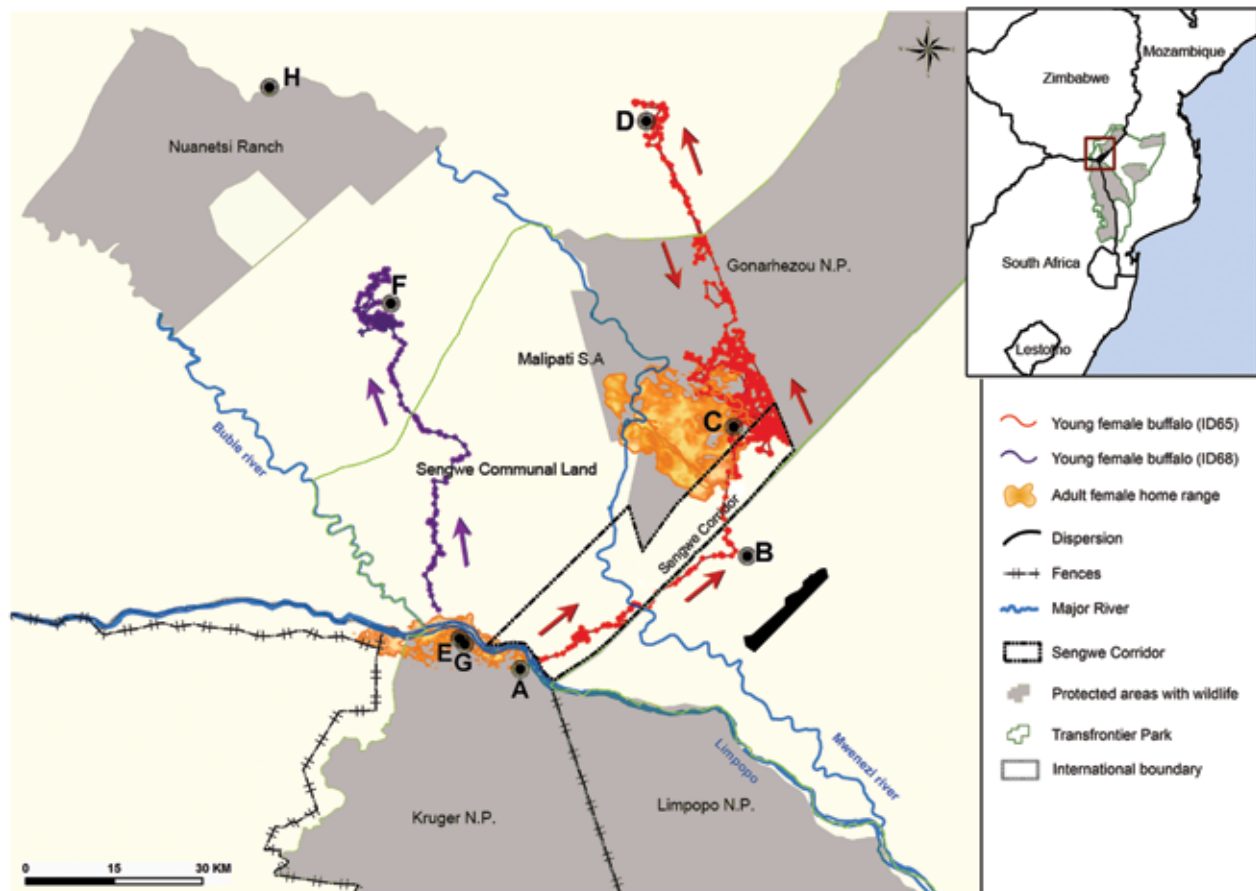
During 2008–2013, a total of 68 satellite or global positioning system radio collars were deployed on African buffalo captured in southern Gonarezhou NP; in northern Kruger NP, south of the Limpopo River; and in Zimbabwe, north of Limpopo River (on Sengwe communal land). Of the 68 buffalo, 47 were adult females, selected because their behavior is representative of core herd movements. Two adult males were also equipped with global positioning system devices because males are believed to move between herds (7); however, these devices failed after a few weeks because the collars fell off. Nineteen subadult female buffalo 2.5–4.5 years of age (age determined by teeth eruption) were also selected because individuals from this group are believed to disperse from their native herds (8; R. Bengis, pers. comm.). During chemical immobilizations of buffalo, blood samples were taken and stored appropriately for disease screening, and individually numbered ear-tags were applied.

During the study, extraordinarily long-distance movements for 3 subadult females were plotted by satellite telemetry readings (Figure 1). In January 2014, a 2.5-year-old female buffalo collared in South Africa walked a maximum direct distance of 95 km. In 6 days, she crossed into Zimbabwe, then into Mozambique, and into Zimbabwe again to enter Gonarezhou NP, with localizations within the home range of the buffalo herd in which bTB was first diagnosed in a female buffalo in 2008 (6). This subadult buffalo later left the park and visited a commercial farm area before reentering Gonarezhou NP. In February 2014, another

---

Author affiliations: University of Pretoria, Pretoria, South Africa (A. Caron); CIRAD, Montpellier, France (A. Caron, D. Cornelis, M. de Garine-Wichatitsky); CIRAD, Harare, Zimbabwe (A. Caron, D. Cornelis, M. de Garine-Wichatitsky); Victoria Falls Wildlife Trust, Victoria Falls, Zimbabwe (C. Foggin); South African National Parks, Skukuza, South Africa (M. Hofmeyr); University of Zimbabwe, Harare (M. de Garine-Wichatitsky)

DOI: <http://dx.doi.org/10.3201/eid2202.140864>



**Figure 1.** Study area encompassing part of Mozambique, South Africa, and Zimbabwe. Inset map shows location of the Great Limpopo Transfrontier Conservation Area within southern Africa. Orange/yellow shaded areas represent the home ranges of 5 satellite collar–equipped adult female African buffaloes, representative of the 5 herds followed for the study in Kruger National Park (NP) ( $n = 3$ ) and Gonarezhou NP ( $n = 2$ ). Because of overlap among the herds, boundaries for the 5 herds cannot be seen. Data for the other adult female buffalo in the study are not represented. The home range of Kruger NP herds span the Limpopo River between South Africa and Zimbabwe. Long-distance movements of 3 subadult female buffalo are shown. Arrows indicate the direction of movements for 2 buffalo; sites of capture and resighting are shown for the third buffalo. A complete description of the movements of these 3 buffalo is provided in the expanded figure legend online (<http://wwwnc.cdc.gov/EID/article/22/2/14-0864-F1.htm>).

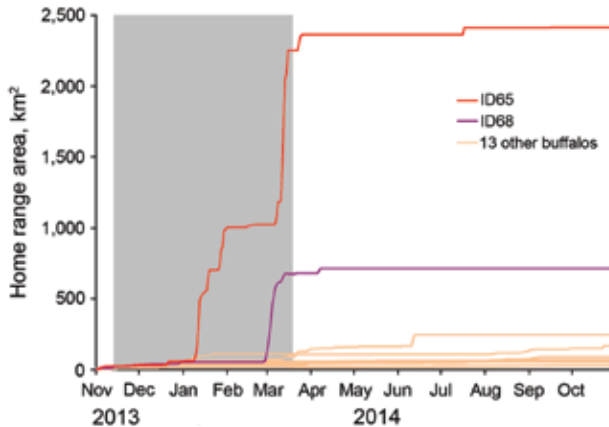
4-year-old female buffalo walked a direct distance of 64 km in 8 days. Finally, in March 2013, a 4.5-year-old female captured in July 2011 was sighted in a location deep into communal land at a distance of 96 km from her capture site. In contrast to these young female buffalo, no adult females collared in this study moved such long distances outside their home range during 2008–2014. The long-distance travel of these 3 subadult females occurred over a few days during the rainy season (Figure 2) and included movements outside the GLTFCA boundary.

## Conclusions

Our findings strengthen the hypothesis that bTB was spread from Kruger NP to Gonarezhou NP through buffalo-to-buffalo transmission by subadult females that dispersed from their native herds. Buffalo populations in Kruger and Gonarezhou NPs are connected through long-distance

movements of individuals, specifically prebreeding heifers. Although this movement is important for buffalo conservation in TFCAs, it could also facilitate the spread of animal diseases, including zoonoses, across borders. In 2010 and 2011, bTB, Rift Valley fever, and brucellosis were detected in Kruger NP buffaloes, although a previous study failed to detect brucellosis in the Gonarezhou NP population (9) (Table). Buffalo ID65, which was initially captured in Kruger NP, was seen among a breeding herd in Gonarezhou NP, indicating the possibility of direct, buffalo-to-buffalo transmission of bTB by dispersing infected individuals, without the need for bridge hosts (e.g., other wild or domestic ungulate species) (10).

Additional ecological information on buffalo dispersion is needed: frequency of dispersion events; size, age, and sex composition of the dispersing groups; and information about whether dispersed individuals later return to their



**Figure 2.** Cumulative home-range area of 15 buffalo collared with global positioning system devices in Kruger National Park, South Africa, in November 2013. Only buffalo with collars that functioned for an entire year are displayed. Data for 2 subadult female buffalo (paths displayed in Figure 1) are shown (ID65 and ID68) separately from data for the 13 other buffalo (subadult and adult females). Gray shading indicates the rainy season (generally when movement began).

home ranges. Subadult females appear to be particularly prone to dispersing behavior, unlike adult females, and we speculate that they may do so in small groups of individuals that are approximately the same age (8). No record exists of subadult female buffalo mixing with male bachelor groups, which are also known to connect to adjacent herds (7). So far, the drivers of such movement patterns are unclear. One possible explanation may be an out-breeding mechanism (11) that occurs before the start of reproduction; subadult females may leave their native herd to begin their reproduction in a distant herd to minimize in-breeding. Furthermore, abundant resources (i.e., water and grazing areas) available during the rainy season maximize the probability of success of such behavior.

We found that subadult females were infected with bTB, brucellosis, and Rift Valley fever (Table), diseases with different mechanisms of transmission. Age and social position in the herd may influence individuals' rate of

exposure to pathogenic infections and consequently may affect the dynamics of infection within and between herds. Our results indicate that subadult female buffalo could play a role in the spread of diseases among distant populations, across protected areas and international borders, and during the rainy season. This seasonal pattern contrasts with the timing of most wildlife and livestock contact between adult females, which has been observed to occur predominantly during the dry season in the study area (4). Buffalo have been observed far outside the boundaries of protected areas, even outside the GLTFCA, in communal land where livestock farming is the main livelihood; these observations considerably widen the wildlife–livestock interface area where disease spread can occur (12). Wildlife–livestock interfaces can encompass large areas, rather than being a fence or strip of land at the edge of protected areas. These data should assist in refining disease modeling by showing the importance of temporal and spatial considerations and by redefining variables (e.g., age and sex) involved in risk for pathogen spillover or emergence (i.e., identifying super-spreaders) (13).

Our results suggest that the spillover of bTB and other zoonoses at the wildlife–livestock–human interface constitutes a risk to animal and human health in the GLTFCA (9,14). The health issue in TFCAs cannot be overlooked and must be part of any management decision. Combining ecological and epidemiologic knowledge is necessary to understand disease dynamics in these complex agro-ecosystems.

**Acknowledgments**

We thank the Department of National Parks and Wildlife Management Authority of Zimbabwe for permission to operate in Gonarezhou National Park; the South African National Parks for permission to conduct our research in Kruger National Park; and the veterinary services of both countries for permits and efficient field support. We also thank Hugo van der Westhuizen for an inflight sighting of buffalo ID65 and Marie Gely for designing the map.

This work was conducted within the frameworks of the Production and Conservation in Partnership Research Platform and the Animal and Human Health for the Environment and

**Table.** Diagnostic results for bovine tuberculosis, brucellosis, and Rift Valley fever in African buffalo populations sampled in Kruger National Park, South Africa, and on the northern bank of the Limpopo River, Sengwe Communal Land, Zimbabwe, 2010 and 2011\*

Type of infection tested for†	No. positive/no. total						All animals‡
	Calf		Subadult		Adult		
	M	F	M	F	M	F	
Bovine tuberculosis	0/4	0/5	2/11	4/25	0/9	2/23	8/77 (4/38)
Brucellosis	0/4	1/5	1/12	4/28	2/9	5/25	13/83 (0/38)§
Rift Valley fever	0/4	0/5	0/12	1/31	1/9	3/28	5/89 (2/38)

\*Individuals and herds belong to the same population (see Figure 1, adult female home range). Calf, <2.5 y of age; subadult, 2.5–4.5 y; adult, >4.5 y.  
 †Laboratory tests used: for bovine tuberculosis, Gamma-interferon test and isolation; for brucellosis, Rose Bengal and Complement fixation tests; for Rift Valley fever, indirect ELISA test.  
 ‡Published results (9) for the same diseases tested in the Gonarezhou National Park buffalo population in Zimbabwe are shown in parentheses.  
 §Difference between Kruger and Gonarezhou population results for brucellosis was significant by Fisher exact test for equality of proportion for small samples (p<0.02).

Development. The project was funded by CIRAD; South African National Parks; Veterinary Services in South Africa's Department of Agriculture; and the Ministère Français des Affaires Étrangères through the French Embassy in Zimbabwe.

Dr. Caron is a disease ecologist who was based in Zimbabwe from 2006 and relocated to Mozambique in 2015. His main research interest is the ecology of infectious transmission at interfaces of wild and domestic animals. He has worked on avian influenza transmission between wild and domestic birds and on pathogens shared at wildlife and cattle interfaces in Africa, including rinderpest, bovine tuberculosis, and foot and mouth disease.

## References

1. Thomson GR, Penrith ML, Atkinson MW, Atkinson SJ, Cassidy D, Osofsky SA. Balancing livestock production and wildlife conservation in and around Southern Africa's Transfrontier Conservation Areas. *Transbound Emerg Dis.* 2013;60:492–506. <http://dx.doi.org/10.1111/tbed.12175>
2. de Garine-Wichatitsky M, Fritz H, Chaminuka P, Caron A, Guerbois C, Pfukenyi D, et al. Consequences of animals crossing the edges of transfrontier parks. In: Andersson JA, de Garine-Wichatitsky M, Cumming DHM, Dzingirai V, Giller KE, editors. *Transfrontier Conservation Areas: people living on the edge.* London: Earthscan; 2013. p. 137–62.
3. Osofsky SA, Cumming HM, Kock MD. Transboundary management of natural resources and the importance of a "One Health" approach: perspectives on southern Africa. In: Fearn E, editor. *State of the wild 2008–2009: a global portrait of wildlife, wildlands, and oceans.* Washington: Island Press; 2008. p. 89–98.
4. Miguel E, Grosbois V, Caron A, Boulmier T, Fritz H, Cornélis D, et al. Contacts and foot and mouth disease transmission from wild to domestic bovines in Africa. *Ecosphere.* 2013;4:art51. <http://dx.doi.org/10.1890/ES12-00239.1>
5. Bengis RG, Kock RA, Fisher J. Infectious animal diseases: the wildlife/livestock interface. *Rev Sci Tech.* 2002;21:53–65.
6. de Garine-Wichatitsky M, Caron A, Gomo A, Foggin C, Dutlow K, Pfukenyi D, et al. Bovine tuberculosis in buffaloes, Southern Africa. *Emerg Infect Dis.* 2010;16:884–5. <http://dx.doi.org/10.3201/eid1605.090710>
7. Sinclair A. *The African buffalo: a study of resource limitation by populations.* Chicago: University of Chicago Press; 1977.
8. Mloszewski MJ. *The behavior and ecology of the African buffalo.* Cambridge: Cambridge University Press; 1983.
9. Caron A, Miguel E, Gomo C, Makaya P, Pfukenyi D, Hove T, et al. Relationship between burden of infection in ungulate populations and wildlife/livestock interfaces. *Epidemiol Infect.* 2013;141:1522–35. <http://dx.doi.org/10.1017/S0950268813000204>
10. Caron A, Cappelle J, Cumming GS, de Garine-Wichatitsky M, Gaidet N. Bridge hosts, a missing link for disease ecology in multi-host systems. *Vet Res.* 2015;46:83. <http://dx.doi.org/10.1186/s13567-015-0217-9>
11. Prins HHT. *Ecology and behaviour of the African buffalo.* London: Chapman & Hall; 1996.
12. Musoke J, Hlokwe T, Marcotty T, du Plessis BJ, Michel AL. Spillover of *Mycobacterium bovis* from wildlife to livestock, South Africa. *Emerg Infect Dis.* 2015;21:448–51. <http://dx.doi.org/10.3201/eid2103.131690>
13. Paull SH, Song S, McClure KM, Sackett LC, Kilpatrick AM, Johnson PTJ. From superspreaders to disease hotspots: linking transmission across hosts and space. *Front Ecol Environ.* 2012;10:75–82. <http://dx.doi.org/10.1890/110111>
14. De Garine-Wichatitsky M, Caron A, Kock R, Tschopp R, Munyeme M, Hofmeyr M, et al. A review on bovine tuberculosis at the wildlife/livestock/human interface in sub-Saharan Africa. *Epidemiol Infect.* 2013;141:1342–56. <http://dx.doi.org/10.1017/S0950268813000708>

Address for correspondence: Alexandre Caron, Cirad—UPR AGIRs, Faculdade de Veterinaria, Universidade Eduardo Mondlane, Maputo, Mozambique; email: alexandre.caron@cirad.fr

## UPDATE MY ADDRESS

Full text free online at  
[www.cdc.gov/eid](http://www.cdc.gov/eid)

### EMERGING INFECTIOUS DISEASES®

The print journal is available at no charge to public health professionals.

Yes, I still want the journal. Please send it to me at the address below.

Number on mailing label: (required) \_\_\_\_\_

Name: \_\_\_\_\_

Full mailing address: (BLOCK LETTERS)



#### Return:

Email: [eideditor@cdc.gov](mailto:eideditor@cdc.gov)

Fax: 404-639-1954

#### or mail to:

EID Editor  
CDC/OID/NCEZID  
1600 Clifton Rd NE  
Mailstop D61  
Atlanta, GA 30329-4027