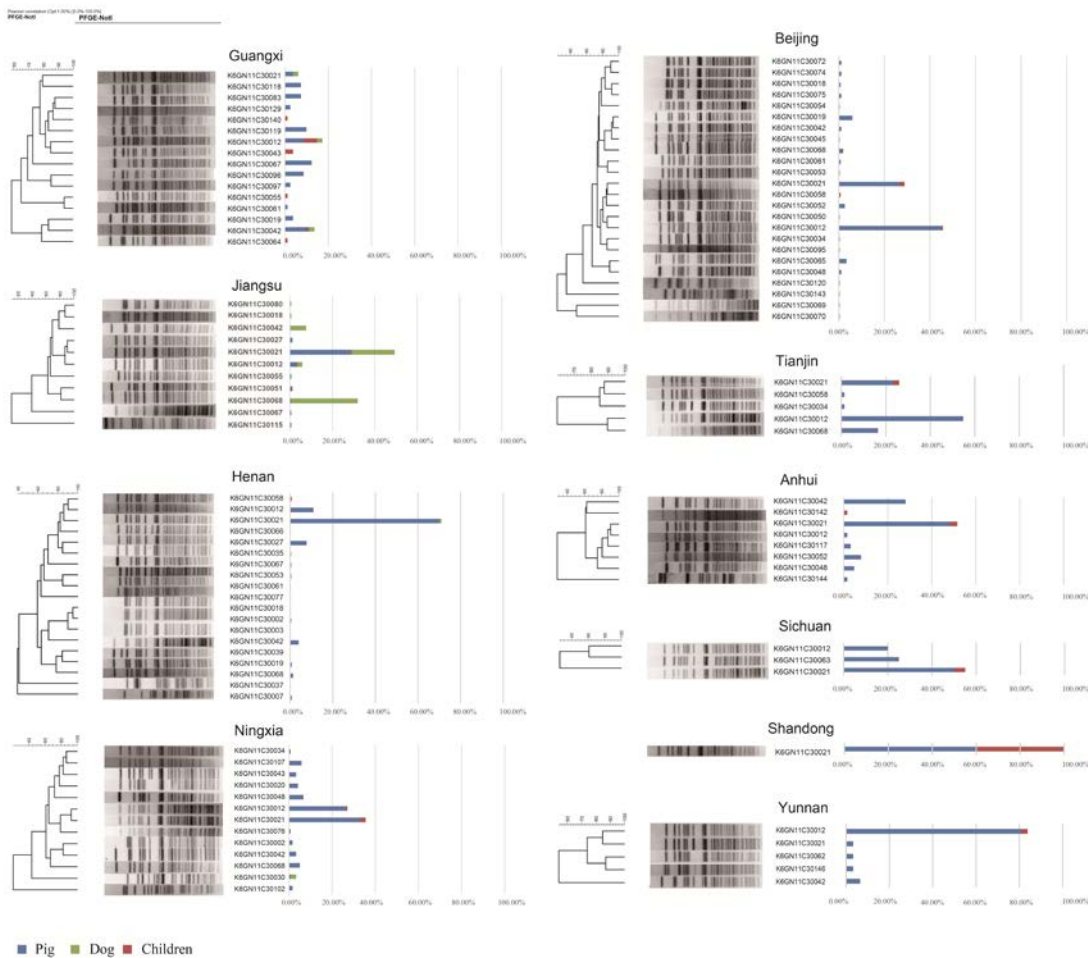


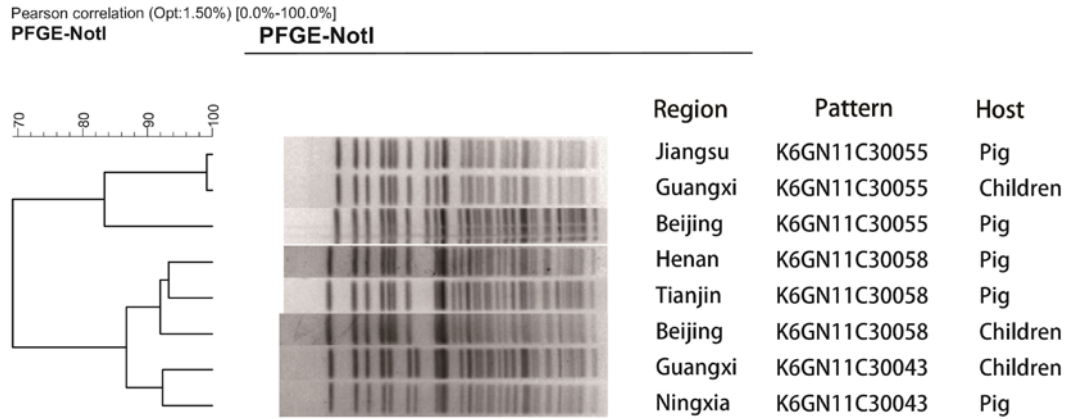
Prevalence of *Yersinia enterocolitica* Bioserotype 3/O:3 among Children with Diarrhea, China, 2010–2015

Technical Appendix



Technical Appendix Figure 1. Cluster analysis of pulsed-field gel electrophoresis patterns of 3/O:3 *Yersinia enterocolitica* isolates obtained from children ≤ 5 years of age, pigs, and dogs by region, China,

2010–2015. Gels depict DNA digests with *NotI*. Clustering trees indicate relatedness of strains. The proportion of each pattern detected per region for children, dogs, and pigs are indicated.



Technical Appendix Figure 2. Cluster analysis of pulsed-field gel electrophoresis patterns show that 3/O:3 *Yersinia enterocolitica* isolates from 6 children ≤ 5 years of age from Guangxi and Beijing share patterns indistinguishable from isolates found in pigs from other regions. Gels depict DNA digests with *NotI*, and clustering trees indicate the relatedness of the isolates shown.