

Frequent Genetic Mismatch between Vaccine Strains and Circulating Seasonal Influenza Viruses, Hong Kong, China, 1996–2012

Technical Appendix

Technical Appendix Table. GenBank accession numbers of hemagglutinin sequences of circulating influenza A and B strains, Hong Kong, China, 1996–2012*

| GenBank accession no. | Type | Isolate ID | Collection date |
|-----------------------|--------------|-----------------------------------|-----------------|
| EU516331 | FluA_H3N2_HA | A/Hong Kong/CUHK22910/2004(H3N2) | Mar-2004 |
| EU856814 | FluA_H3N2_HA | A/Hong Kong/CUHK10026/2005(H3N2) | Apr-2005 |
| EU856815 | FluA_H3N2_HA | A/Hong Kong/CUHK10100/1999(H3N2) | Jan-1999 |
| EU856816 | FluA_H3N2_HA | A/Hong Kong/CUHK10132/1999(H3N2) | Jan-1999 |
| EU856817 | FluA_H3N2_HA | A/Hong Kong/CUHK10133/1999(H3N2) | Jan-1999 |
| EU856818 | FluA_H3N2_HA | A/Hong Kong/CUHK10151/1999(H3N2) | Jan-1999 |
| EU856819 | FluA_H3N2_HA | A/Hong Kong/CUHK10186/1998(H3N2) | Jan-1998 |
| EU856820 | FluA_H3N2_HA | A/Hong Kong/CUHK10216/1998(H3N2) | Jan-1998 |
| EU856821 | FluA_H3N2_HA | A/Hong Kong/CUHK10276/1998(H3N2) | Jan-1998 |
| EU856822 | FluA_H3N2_HA | A/Hong Kong/CUHK10297/2005(H3N2) | Apr-2005 |
| EU856824 | FluA_H3N2_HA | A/Hong Kong/CUHK10554/1998(H3N2) | Jan-1998 |
| EU856825 | FluA_H3N2_HA | A/Hong Kong/CUHK10591/2005(H3N2) | Apr-2005 |
| EU856826 | FluA_H3N2_HA | A/Hong Kong/CUHK10632/1998(H3N2) | Jan-1998 |
| EU856827 | FluA_H3N2_HA | A/Hong Kong/CUHK10660/1998(H3N2) | Jan-1998 |
| EU856829 | FluA_H3N2_HA | A/Hong Kong/CUHK010954/1998(H3N2) | Jan-1998 |
| EU856830 | FluA_H3N2_HA | A/Hong Kong/CUHK10958/1998(H3N2) | Jan-1998 |
| EU856833 | FluA_H3N2_HA | A/Hong Kong/CUHK11230/1999(H3N2) | Feb-1999 |
| EU856834 | FluA_H3N2_HA | A/Hong Kong/CUHK11237/1999(H3N2) | Feb-1999 |
| EU856836 | FluA_H3N2_HA | A/Hong Kong/CUHK11255/1999(H3N2) | Feb-1999 |
| EU856837 | FluA_H3N2_HA | A/Hong Kong/CUHK11949/2005(H3N2) | Apr-2005 |
| EU856839 | FluA_H3N2_HA | A/Hong Kong/CUHK12160/1997(H3N2) | May-1997 |
| EU856840 | FluA_H3N2_HA | A/Hong Kong/CUHK12312/1999(H3N2) | Mar-1999 |
| EU856841 | FluA_H3N2_HA | A/Hong Kong/CUHK12316/2005(H3N2) | May-2005 |
| EU856842 | FluA_H3N2_HA | A/Hong Kong/CUHK12320/2005(H3N2) | May-2005 |
| EU856843 | FluA_H3N2_HA | A/Hong Kong/CUHK12420/2005(H3N2) | May-2005 |
| EU856844 | FluA_H3N2_HA | A/Hong Kong/CUHK12425/2005(H3N2) | May-2005 |
| EU856845 | FluA_H3N2_HA | A/Hong Kong/CUHK12563/1997(H3N2) | Jun-1997 |
| EU856846 | FluA_H3N2_HA | A/Hong Kong/CUHK12566/1997(H3N2) | Jun-1997 |
| EU856847 | FluA_H3N2_HA | A/Hong Kong/CUHK12572/1999(H3N2) | Apr-1999 |
| EU856848 | FluA_H3N2_HA | A/Hong Kong/CUHK12580/1999(H3N2) | Apr-1999 |
| EU856849 | FluA_H3N2_HA | A/Hong Kong/CUHK12626/1997(H3N2) | Jun-1997 |
| EU856850 | FluA_H3N2_HA | A/Hong Kong/CUHK12794/1997(H3N2) | Jun-1997 |
| EU856851 | FluA_H3N2_HA | A/Hong Kong/CUHK12897/1999(H3N2) | Apr-1999 |
| EU856852 | FluA_H3N2_HA | A/Hong Kong/CUHK13033/2001(H3N2) | Mar-2001 |
| EU856853 | FluA_H3N2_HA | A/Hong Kong/CUHK13048/2001(H3N2) | Mar-2001 |
| EU856854 | FluA_H3N2_HA | A/Hong Kong/CUHK13126/2004(H3N2) | Feb-2004 |
| EU856855 | FluA_H3N2_HA | A/Hong Kong/CUHK13172/2001(H3N2) | Mar-2001 |
| EU856856 | FluA_H3N2_HA | A/Hong Kong/CUHK13216/2002(H3N2) | Mar-2002 |
| EU856857 | FluA_H3N2_HA | A/Hong Kong/CUHK13249/2002(H3N2) | Mar-2002 |
| EU856858 | FluA_H3N2_HA | A/Hong Kong/CUHK13278/2002(H3N2) | Mar-2002 |
| EU856859 | FluA_H3N2_HA | A/Hong Kong/CUHK13299/2003(H3N2) | Mar-2003 |
| EU856860 | FluA_H3N2_HA | A/Hong Kong/CUHK13339/2003(H3N2) | Mar-2003 |
| EU856861 | FluA_H3N2_HA | A/Hong Kong/CUHK13434/2003(H3N2) | Mar-2003 |
| EU856862 | FluA_H3N2_HA | A/Hong Kong/CUHK13483/2003(H3N2) | Mar-2003 |
| EU856863 | FluA_H3N2_HA | A/Hong Kong/CUHK13510/2001(H3N2) | Mar-2001 |
| EU856864 | FluA_H3N2_HA | A/Hong Kong/CUHK13527/2003(H3N2) | Mar-2003 |
| EU856865 | FluA_H3N2_HA | A/Hong Kong/CUHK13658/2001(H3N2) | Mar-2001 |

| GenBank accession no. | Type | Isolate ID | Collection date |
|-----------------------|--------------|-----------------------------------|-----------------|
| EU856866 | FluA_H3N2_HA | A/Hong Kong/CUHK13763/1999(H3N2) | May-1999 |
| EU856867 | FluA_H3N2_HA | A/Hong Kong/CUHK14627/1999(H3N2) | Jun-1999 |
| EU856868 | FluA_H3N2_HA | A/Hong Kong/CUHK14672/1999(H3N2) | Jun-1999 |
| EU856869 | FluA_H3N2_HA | A/Hong Kong/CUHK14875/1999(H3N2) | Jun-1999 |
| EU856870 | FluA_H3N2_HA | A/Hong Kong/CUHK14999/2005(H3N2) | Jun-2005 |
| EU856871 | FluA_H3N2_HA | A/Hong Kong/CUHK16614/1998(H3N2) | Jul-1998 |
| EU856872 | FluA_H3N2_HA | A/Hong Kong/CUHK17464/1998(H3N2) | Aug-1998 |
| EU856873 | FluA_H3N2_HA | A/Hong Kong/CUHK17603/1998(H3N2) | Aug-1998 |
| EU856875 | FluA_H3N2_HA | A/Hong Kong/CUHK17697/1998(H3N2) | Aug-1998 |
| EU856876 | FluA_H3N2_HA | A/Hong Kong/CUHK17704/1998(H3N2) | Aug-1998 |
| EU856877 | FluA_H3N2_HA | A/Hong Kong/CUHK17707/1998(H3N2) | Aug-1998 |
| EU856878 | FluA_H3N2_HA | A/Hong Kong/CUHK17872/1998(H3N2) | Aug-1998 |
| EU856879 | FluA_H3N2_HA | A/Hong Kong/CUHK18036/1998(H3N2) | Aug-1998 |
| EU856880 | FluA_H3N2_HA | A/Hong Kong/CUHK18194/1998(H3N2) | Sep-1998 |
| EU856881 | FluA_H3N2_HA | A/Hong Kong/CUHK18218/1998(H3N2) | Sep-1998 |
| EU856882 | FluA_H3N2_HA | A/Hong Kong/CUHK18230/1998(H3N2) | Sep-1998 |
| EU856883 | FluA_H3N2_HA | A/Hong Kong/CUHK18351/1998(H3N2) | Sep-1998 |
| EU856884 | FluA_H3N2_HA | A/Hong Kong/CUHK18358/1998(H3N2) | Sep-1998 |
| EU856885 | FluA_H3N2_HA | A/Hong Kong/CUHK18610/1998(H3N2) | Sep-1998 |
| EU856886 | FluA_H3N2_HA | A/Hong Kong/CUHK18886/1998(H3N2) | Oct-1998 |
| EU856887 | FluA_H3N2_HA | A/Hong Kong/CUHK19579/1998(H3N2) | Nov-1998 |
| EU856888 | FluA_H3N2_HA | A/Hong Kong/CUHK20010/1997(H3N2) | Jun-1997 |
| EU856889 | FluA_H3N2_HA | A/Hong Kong/CUHK20169/2000(H3N2) | Jan-2000 |
| EU856890 | FluA_H3N2_HA | A/Hong Kong/CUHK20173/2000(H3N2) | Jan-2000 |
| EU856891 | FluA_H3N2_HA | A/Hong Kong/CUHK20199/1997(H3N2) | Jul-1997 |
| EU856892 | FluA_H3N2_HA | A/Hong Kong/CUHK20200/2000(H3N2) | Jan-2000 |
| EU856893 | FluA_H3N2_HA | A/Hong Kong/CUHK20213/1997(H3N2) | Jul-1997 |
| EU856894 | FluA_H3N2_HA | A/Hong Kong/CUHK20217/1997(H3N2) | Jul-1997 |
| EU856895 | FluA_H3N2_HA | A/Hong Kong/CUHK20236/1997(H3N2) | Jul-1997 |
| EU856896 | FluA_H3N2_HA | A/Hong Kong/CUHK20292/2000(H3N2) | Jan-2000 |
| EU856897 | FluA_H3N2_HA | A/Hong Kong/CUHK20294/2000(H3N2) | Jan-2000 |
| EU856898 | FluA_H3N2_HA | A/Hong Kong/CUHK20300/2000(H3N2) | Jan-2000 |
| EU856899 | FluA_H3N2_HA | A/Hong Kong/CUHK20320/1997(H3N2) | Jul-1997 |
| EU856900 | FluA_H3N2_HA | A/Hong Kong/CUHK20523/1997(H3N2) | Jul-1997 |
| EU856901 | FluA_H3N2_HA | A/Hong Kong/CUHK20731/1997(H3N2) | Jul-1997 |
| EU856902 | FluA_H3N2_HA | A/Hong Kong/CUHK20992/1997(H3N2) | Aug-1997 |
| EU856903 | FluA_H3N2_HA | A/Hong Kong/CUHK21124/2000(H3N2) | Feb-2000 |
| EU856905 | FluA_H3N2_HA | A/Hong Kong/CUHK21132/2000(H3N2) | Feb-2000 |
| EU856906 | FluA_H3N2_HA | A/Hong Kong/CUHK21164/2004(H3N2) | Feb-2004 |
| EU856907 | FluA_H3N2_HA | A/Hong Kong/CUHK21226/2001(H3N2) | Apr-2001 |
| EU856908 | FluA_H3N2_HA | A/Hong Kong/CUHK21250/2000(H3N2) | Feb-2000 |
| EU856909 | FluA_H3N2_HA | A/Hong Kong/CUHK21259/2004(H3N2) | Feb-2004 |
| EU856910 | FluA_H3N2_HA | A/Hong Kong/CUHK21421/2001(H3N2) | Apr-2001 |
| EU856911 | FluA_H3N2_HA | A/Hong Kong/CUHK21582/2002(H3N2) | Apr-2002 |
| EU856912 | FluA_H3N2_HA | A/Hong Kong/CUHK21675/2001(H3N2) | Apr-2001 |
| EU856913 | FluA_H3N2_HA | A/Hong Kong/CUHK21713/2002(H3N2) | Apr-2002 |
| EU856914 | FluA_H3N2_HA | A/Hong Kong/CUHK21733/2001(H3N2) | Apr-2001 |
| EU856915 | FluA_H3N2_HA | A/Hong Kong/CUHK21734/2001(H3N2) | Apr-2001 |
| EU856916 | FluA_H3N2_HA | A/Hong Kong/CUHK21742/2002(H3N2) | Apr-2002 |
| EU856918 | FluA_H3N2_HA | A/Hong Kong/CUHK021932/2001(H3N2) | Apr-2001 |
| EU856919 | FluA_H3N2_HA | A/Hong Kong/CUHK21957/2002(H3N2) | Apr-2002 |
| EU856920 | FluA_H3N2_HA | A/Hong Kong/CUHK22013/1997(H3N2) | Aug-1997 |
| EU856921 | FluA_H3N2_HA | A/Hong Kong/CUHK22048/1997(H3N2) | Aug-1997 |
| EU856922 | FluA_H3N2_HA | A/Hong Kong/CUHK22072/2000(H3N2) | Mar-2000 |
| EU856923 | FluA_H3N2_HA | A/Hong Kong/CUHK22078/2000(H3N2) | Mar-2000 |
| EU856924 | FluA_H3N2_HA | A/Hong Kong/CUHK22087/2000(H3N2) | Mar-2000 |
| EU856925 | FluA_H3N2_HA | A/Hong Kong/CUHK22162/2000(H3N2) | Mar-2000 |
| EU856926 | FluA_H3N2_HA | A/Hong Kong/CUHK22163/2000(H3N2) | Mar-2000 |
| EU856928 | FluA_H3N2_HA | A/Hong Kong/CUHK22510/2004(H3N2) | Mar-2004 |
| EU856929 | FluA_H3N2_HA | A/Hong Kong/CUHK22567/2004(H3N2) | Mar-2004 |
| EU856930 | FluA_H3N2_HA | A/Hong Kong/CUHK22644/2001(H3N2) | May-2001 |
| EU856931 | FluA_H3N2_HA | A/Hong Kong/CUHK22736/1997(H3N2) | Sep-1997 |
| EU856932 | FluA_H3N2_HA | A/Hong Kong/CUHK22888/2001(H3N2) | May-2001 |
| EU856933 | FluA_H3N2_HA | A/Hong Kong/CUHK23111/2002(H3N2) | May-2002 |
| EU856934 | FluA_H3N2_HA | A/Hong Kong/CUHK23113/2002(H3N2) | May-2002 |
| EU856935 | FluA_H3N2_HA | A/Hong Kong/CUHK23162/2002(H3N2) | May-2002 |
| EU856936 | FluA_H3N2_HA | A/Hong Kong/CUHK23180/2002(H3N2) | May-2002 |
| EU856937 | FluA_H3N2_HA | A/Hong Kong/CUHK24044/2002(H3N2) | Jun-2002 |
| EU856938 | FluA_H3N2_HA | A/Hong Kong/CUHK24054/2002(H3N2) | Jun-2002 |

| GenBank accession no. | Type | Isolate ID | Collection date |
|-----------------------|--------------|----------------------------------|-----------------|
| EU856939 | FluA_H3N2_HA | A/Hong Kong/CUHK24114/2002(H3N2) | Jun-2002 |
| EU856940 | FluA_H3N2_HA | A/Hong Kong/CUHK24167/2002(H3N2) | Jun-2002 |
| EU856942 | FluA_H3N2_HA | A/Hong Kong/CUHK24289/2004(H3N2) | Apr-2004 |
| EU856944 | FluA_H3N2_HA | A/Hong Kong/CUHK24447/2004(H3N2) | Apr-2004 |
| EU856945 | FluA_H3N2_HA | A/Hong Kong/CUHK24510/2001(H3N2) | Jul-2001 |
| EU856946 | FluA_H3N2_HA | A/Hong Kong/CUHK24749/2001(H3N2) | Jul-2001 |
| EU856947 | FluA_H3N2_HA | A/Hong Kong/CUHK24760/2001(H3N2) | Jul-2001 |
| EU856948 | FluA_H3N2_HA | A/Hong Kong/CUHK24825/2001(H3N2) | Jul-2001 |
| EU856949 | FluA_H3N2_HA | A/Hong Kong/CUHK24882/2001(H3N2) | Jul-2001 |
| EU856950 | FluA_H3N2_HA | A/Hong Kong/CUHK24985/2001(H3N2) | Jul-2001 |
| EU856951 | FluA_H3N2_HA | A/Hong Kong/CUHK26805/2000(H3N2) | Jul-2000 |
| EU856952 | FluA_H3N2_HA | A/Hong Kong/CUHK26846/2000(H3N2) | Jul-2000 |
| EU856953 | FluA_H3N2_HA | A/Hong Kong/CUHK26907/2000(H3N2) | Jul-2000 |
| EU856954 | FluA_H3N2_HA | A/Hong Kong/CUHK26969/2000(H3N2) | Jul-2000 |
| EU856956 | FluA_H3N2_HA | A/Hong Kong/CUHK27157/2000(H3N2) | Aug-2000 |
| EU856957 | FluA_H3N2_HA | A/Hong Kong/CUHK27183/2000(H3N2) | Aug-2000 |
| EU856959 | FluA_H3N2_HA | A/Hong Kong/CUHK27374/2000(H3N2) | Aug-2000 |
| EU856960 | FluA_H3N2_HA | A/Hong Kong/CUHK28038/2000(H3N2) | Sep-2000 |
| EU856961 | FluA_H3N2_HA | A/Hong Kong/CUHK28040/2000(H3N2) | Sep-2000 |
| EU856965 | FluA_H3N2_HA | A/Hong Kong/CUHK30314/1999(H3N2) | Jul-1999 |
| EU856966 | FluA_H3N2_HA | A/Hong Kong/CUHK30419/1999(H3N2) | Jul-1999 |
| EU856968 | FluA_H3N2_HA | A/Hong Kong/CUHK30605/1999(H3N2) | Jul-1999 |
| EU856969 | FluA_H3N2_HA | A/Hong Kong/CUHK31421/1999(H3N2) | Aug-1999 |
| EU856970 | FluA_H3N2_HA | A/Hong Kong/CUHK31448/1999(H3N2) | Aug-1999 |
| EU856971 | FluA_H3N2_HA | A/Hong Kong/CUHK31490/1999(H3N2) | Aug-1999 |
| EU856972 | FluA_H3N2_HA | A/Hong Kong/CUHK31510/1999(H3N2) | Aug-1999 |
| EU856973 | FluA_H3N2_HA | A/Hong Kong/CUHK32796/1999(H3N2) | Sep-1999 |
| EU856974 | FluA_H3N2_HA | A/Hong Kong/CUHK33047/2002(H3N2) | Jul-2002 |
| EU856975 | FluA_H3N2_HA | A/Hong Kong/CUHK33079/2002(H3N2) | Jul-2002 |
| EU856976 | FluA_H3N2_HA | A/Hong Kong/CUHK33106/2002(H3N2) | Jul-2002 |
| EU856977 | FluA_H3N2_HA | A/Hong Kong/CUHK33199/2002(H3N2) | Jul-2002 |
| EU856978 | FluA_H3N2_HA | A/Hong Kong/CUHK33316/2001(H3N2) | Aug-2001 |
| EU856979 | FluA_H3N2_HA | A/Hong Kong/CUHK33406/2001(H3N2) | Aug-2001 |
| EU856980 | FluA_H3N2_HA | A/Hong Kong/CUHK33416/2001(H3N2) | Aug-2001 |
| EU856981 | FluA_H3N2_HA | A/Hong Kong/CUHK33418/2001(H3N2) | Aug-2001 |
| EU856982 | FluA_H3N2_HA | A/Hong Kong/CUHK33677/2004(H3N2) | May-2004 |
| EU856983 | FluA_H3N2_HA | A/Hong Kong/CUHK33829/1999(H3N2) | Oct-1999 |
| EU856984 | FluA_H3N2_HA | A/Hong Kong/CUHK33851/2004(H3N2) | May-2004 |
| EU856986 | FluA_H3N2_HA | A/Hong Kong/CUHK33894/2004(H3N2) | May-2004 |
| EU856987 | FluA_H3N2_HA | A/Hong Kong/CUHK33915/1999(H3N2) | Oct-1999 |
| EU856988 | FluA_H3N2_HA | A/Hong Kong/CUHK34114/2001(H3N2) | Aug-2001 |
| EU856989 | FluA_H3N2_HA | A/Hong Kong/CUHK34175/2002(H3N2) | Aug-2002 |
| EU856990 | FluA_H3N2_HA | A/Hong Kong/CUHK34193/2002(H3N2) | Feb-2002 |
| EU856992 | FluA_H3N2_HA | A/Hong Kong/CUHK35011/2004(H3N2) | Jun-2004 |
| EU856993 | FluA_H3N2_HA | A/Hong Kong/CUHK35013/2004(H3N2) | Jun-2004 |
| EU856994 | FluA_H3N2_HA | A/Hong Kong/CUHK35117/2004(H3N2) | Jun-2004 |
| EU856995 | FluA_H3N2_HA | A/Hong Kong/CUHK35435/2004(H3N2) | Jun-2004 |
| EU856996 | FluA_H3N2_HA | A/Hong Kong/CUHK40022/2005(H3N2) | Jun-2005 |
| EU856997 | FluA_H3N2_HA | A/Hong Kong/CUHK40139/2005(H3N2) | Jun-2005 |
| EU857001 | FluA_H3N2_HA | A/Hong Kong/CUHK41114/1997(H3N2) | Dec-1997 |
| EU857002 | FluA_H3N2_HA | A/Hong Kong/CUHK41222/1997(H3N2) | Dec-1997 |
| EU857003 | FluA_H3N2_HA | A/Hong Kong/CUHK41459/1997(H3N2) | Dec-1997 |
| EU857004 | FluA_H3N2_HA | A/Hong Kong/CUHK41477/1997(H3N2) | Mar-1997 |
| EU857006 | FluA_H3N2_HA | A/Hong Kong/CUHK41757/1997(H3N2) | Dec-1997 |
| EU857007 | FluA_H3N2_HA | A/Hong Kong/CUHK42241/2005(H3N2) | Jul-2005 |
| EU857008 | FluA_H3N2_HA | A/Hong Kong/CUHK4245/1997(H3N2) | Mar-1997 |
| EU857009 | FluA_H3N2_HA | A/Hong Kong/CUHK42644/2005(H3N2) | Jul-2005 |
| EU857010 | FluA_H3N2_HA | A/Hong Kong/CUHK42763/2005(H3N2) | Jul-2005 |
| EU857011 | FluA_H3N2_HA | A/Hong Kong/CUHK43751/2005(H3N2) | Jul-2005 |
| EU857012 | FluA_H3N2_HA | A/Hong Kong/CUHK4391/1997(H3N2) | Mar-1997 |
| EU857013 | FluA_H3N2_HA | A/Hong Kong/CUHK45130/2006(H3N2) | Dec-2006 |
| EU857014 | FluA_H3N2_HA | A/Hong Kong/CUHK4529/1997(H3N2) | Apr-1997 |
| EU857018 | FluA_H3N2_HA | A/Hong Kong/CUHK50080/2001(H3N2) | Nov-2001 |
| EU857019 | FluA_H3N2_HA | A/Hong Kong/CUHK50200/2002(H3N2) | Oct-2002 |
| EU857021 | FluA_H3N2_HA | A/Hong Kong/CUHK50372/2004(H3N2) | Jul-2004 |
| EU857022 | FluA_H3N2_HA | A/Hong Kong/CUHK50552/1998(H3N2) | Dec-1998 |
| EU857023 | FluA_H3N2_HA | A/Hong Kong/CUHK50563/2004(H3N2) | Jul-2004 |
| EU857024 | FluA_H3N2_HA | A/Hong Kong/CUHK50600/2004(H3N2) | Jul-2004 |
| EU857025 | FluA_H3N2_HA | A/Hong Kong/CUHK50722/1998(H3N2) | Dec-1998 |

| GenBank accession no. | Type | Isolate ID | Collection date |
|-----------------------|--------------|----------------------------------|-----------------|
| EU857026 | FluA_H3N2_HA | A/Hong Kong/CUHK50895/2003(H3N2) | Jul-2003 |
| EU857027 | FluA_H3N2_HA | A/Hong Kong/CUHK50952/2003(H3N2) | Jul-2003 |
| EU857028 | FluA_H3N2_HA | A/Hong Kong/CUHK5111/2003(H3N2) | Jan-2003 |
| EU857029 | FluA_H3N2_HA | A/Hong Kong/CUHK51353/2003(H3N2) | Jul-2003 |
| EU857030 | FluA_H3N2_HA | A/Hong Kong/CUHK51380/2003(H3N2) | Jul-2003 |
| EU857031 | FluA_H3N2_HA | A/Hong Kong/CUHK51424/2001(H3N2) | Dec-2001 |
| EU857032 | FluA_H3N2_HA | A/Hong Kong/CUHK51431/2001(H3N2) | Dec-2001 |
| EU857033 | FluA_H3N2_HA | A/Hong Kong/CUHK51490/2001(H3N2) | Dec-2001 |
| EU857035 | FluA_H3N2_HA | A/Hong Kong/CUHK52011/2003(H3N2) | Aug-2003 |
| EU857036 | FluA_H3N2_HA | A/Hong Kong/CUHK52247/2000(H3N2) | Dec-2000 |
| EU857037 | FluA_H3N2_HA | A/Hong Kong/CUHK52274/2004(H3N2) | Aug-2004 |
| EU857038 | FluA_H3N2_HA | A/Hong Kong/CUHK52390/2004(H3N2) | Aug-2004 |
| EU857039 | FluA_H3N2_HA | A/Hong Kong/CUHK52467/2003(H3N2) | Aug-2003 |
| EU857040 | FluA_H3N2_HA | A/Hong Kong/CUHK5250/2002(H3N2) | Jan-2002 |
| EU857041 | FluA_H3N2_HA | A/Hong Kong/CUHK5251/2002(H3N2) | Jan-2002 |
| EU857044 | FluA_H3N2_HA | A/Hong Kong/CUHK52923/2003(H3N2) | Aug-2003 |
| EU857045 | FluA_H3N2_HA | A/Hong Kong/CUHK52941/2004(H3N2) | Aug-2004 |
| EU857046 | FluA_H3N2_HA | A/Hong Kong/CUHK5296/2002(H3N2) | Jan-2002 |
| EU857047 | FluA_H3N2_HA | A/Hong Kong/CUHK5300/2005(H3N2) | Jan-2005 |
| EU857048 | FluA_H3N2_HA | A/Hong Kong/CUHK53004/2006(H3N2) | Mar-2006 |
| EU857050 | FluA_H3N2_HA | A/Hong Kong/CUHK53123/2002(H3N2) | Dec-2002 |
| EU857052 | FluA_H3N2_HA | A/Hong Kong/CUHK53327/2002(H3N2) | Dec-2002 |
| EU857053 | FluA_H3N2_HA | A/Hong Kong/CUHK53726/2004(H3N2) | Sep-2004 |
| EU857054 | FluA_H3N2_HA | A/Hong Kong/CUHK53732/2004(H3N2) | Sep-2004 |
| EU857055 | FluA_H3N2_HA | A/Hong Kong/CUHK53766/2004(H3N2) | Sep-2004 |
| EU857057 | FluA_H3N2_HA | A/Hong Kong/CUHK53907/2006(H3N2) | Mar-2006 |
| EU857058 | FluA_H3N2_HA | A/Hong Kong/CUHK5567/2005(H3N2) | Jan-2005 |
| EU857059 | FluA_H3N2_HA | A/Hong Kong/CUHK5627/2003(H3N2) | Jan-2003 |
| EU857061 | FluA_H3N2_HA | A/Hong Kong/CUHK5723/2003(H3N2) | Jan-2003 |
| EU857062 | FluA_H3N2_HA | A/Hong Kong/CUHK60052/2006(H3N2) | Jun-2006 |
| EU857063 | FluA_H3N2_HA | A/Hong Kong/CUHK6205/2003(H3N2) | Feb-2003 |
| EU857064 | FluA_H3N2_HA | A/Hong Kong/CUHK6206/2002(H3N2) | Feb-2002 |
| EU857066 | FluA_H3N2_HA | A/Hong Kong/CUHK6262/2003(H3N2) | Feb-2003 |
| EU857067 | FluA_H3N2_HA | A/Hong Kong/CUHK6377/2003(H3N2) | Feb-2003 |
| EU857068 | FluA_H3N2_HA | A/Hong Kong/CUHK6383/2003(H3N2) | Feb-2003 |
| EU857070 | FluA_H3N2_HA | A/Hong Kong/CUHK64082/2006(H3N2) | Sep-2006 |
| EU857071 | FluA_H3N2_HA | A/Hong Kong/CUHK6422/2005(H3N2) | Jan-2005 |
| EU857072 | FluA_H3N2_HA | A/Hong Kong/CUHK6427/2003(H3N2) | Feb-2003 |
| EU857074 | FluA_H3N2_HA | A/Hong Kong/CUHK65241/2006(H3N2) | Sep-2006 |
| EU857076 | FluA_H3N2_HA | A/Hong Kong/CUHK66001/2006(H3N2) | Oct-2006 |
| EU857078 | FluA_H3N2_HA | A/Hong Kong/CUHK68792/2006(H3N2) | Dec-2006 |
| EU857079 | FluA_H3N2_HA | A/Hong Kong/CUHK6898/2005(H3N2) | Feb-2005 |
| EU857080 | FluA_H3N2_HA | A/Hong Kong/CUHK69904/2006(H3N2) | Dec-2006 |
| EU857081 | FluA_H3N2_HA | A/Hong Kong/CUHK70435/2003(H3N2) | Sep-2003 |
| EU857082 | FluA_H3N2_HA | A/Hong Kong/CUHK7047/2005(H3N2) | Feb-2005 |
| EU857083 | FluA_H3N2_HA | A/Hong Kong/CUHK71313/2003(H3N2) | Sep-2003 |
| EU857084 | FluA_H3N2_HA | A/Hong Kong/CUHK72014/2003(H3N2) | Sep-2003 |
| EU857085 | FluA_H3N2_HA | A/Hong Kong/CUHK7221/2005(H3N2) | Feb-2005 |
| EU857086 | FluA_H3N2_HA | A/Hong Kong/CUHK74438/2003(H3N2) | Nov-2003 |
| EU857087 | FluA_H3N2_HA | A/Hong Kong/CUHK74457/2003(H3N2) | Nov-2003 |
| EU857088 | FluA_H3N2_HA | A/Hong Kong/CUHK7546/2005(H3N2) | Feb-2005 |
| EU857089 | FluA_H3N2_HA | A/Hong Kong/CUHK75994/2003(H3N2) | Dec-2003 |
| EU857090 | FluA_H3N2_HA | A/Hong Kong/CUHK7670/2005(H3N2) | Mar-2005 |
| EU857093 | FluA_H3N2_HA | A/Hong Kong/CUHK8333/2005(H3N2) | Mar-2005 |
| EU857094 | FluA_H3N2_HA | A/Hong Kong/CUHK83422/2003(H3N2) | Dec-2003 |
| MF955212 | FluA_H3N2_HA | A/Hong Kong/CUHK27868/2011(H3N2) | Sep-2011 |
| MF955213 | FluA_H3N2_HA | A/Hong Kong/CUHK59603/2009(H3N2) | Apr-2009 |
| MF955214 | FluA_H3N2_HA | A/Hong Kong/CUHK41162/2010(H3N2) | Sep-2010 |
| MF955215 | FluA_H3N2_HA | A/Hong Kong/CUHK18263/1996(H3N2) | Jun-1996 |
| MF955216 | FluA_H3N2_HA | A/Hong Kong/CUHK66043/2008(H3N2) | Apr-2008 |
| MF955217 | FluA_H3N2_HA | A/Hong Kong/CUHK42826/2007(H3N2) | Sep-2007 |
| MF955218 | FluA_H3N2_HA | A/Hong Kong/CUHK32398/2011(H3N2) | Dec-2011 |
| MF955219 | FluA_H3N2_HA | A/Hong Kong/CUHK03421/1996(H3N2) | Mar-1996 |
| MF955220 | FluA_H3N2_HA | A/Hong Kong/CUHK43773/2012(H3N2) | Sep-2012 |
| MF955221 | FluA_H3N2_HA | A/Hong Kong/CUHK49134/2012(H3N2) | Dec-2012 |
| MF955222 | FluA_H3N2_HA | A/Hong Kong/CUHK74487/2008(H3N2) | Aug-2008 |
| MF955223 | FluA_H3N2_HA | A/Hong Kong/CUHK10703/1996(H3N2) | Mar-1996 |
| MF955224 | FluA_H3N2_HA | A/Hong Kong/CUHK28267/2011(H3N2) | Sep-2011 |
| MF955225 | FluA_H3N2_HA | A/Hong Kong/CUHK03367/1996(H3N2) | Mar-1996 |

| GenBank accession no. | Type | Isolate ID | Collection date |
|-----------------------|--------------|----------------------------------|-----------------|
| MF955226 | FluA_H3N2_HA | A/Hong Kong/CUHK68950/2008(H3N2) | May-2008 |
| MF955227 | FluA_H3N2_HA | A/Hong Kong/CUHK70724/2009(H3N2) | Apr-2009 |
| MF955228 | FluA_H3N2_HA | A/Hong Kong/CUHK40360/2010(H3N2) | Sep-2010 |
| MF955229 | FluA_H3N2_HA | A/Hong Kong/CUHK41243/2012(H3N2) | Aug-2012 |
| MF955230 | FluA_H3N2_HA | A/Hong Kong/CUHK35729/2012(H3N2) | May-2012 |
| MF955231 | FluA_H3N2_HA | A/Hong Kong/CUHK21764/1996(H3N2) | Jun-1996 |
| MF955232 | FluA_H3N2_HA | A/Hong Kong/CUHK17970/1996(H3N2) | May-1996 |
| MF955233 | FluA_H3N2_HA | A/Hong Kong/CUHK41913/2012(H3N2) | Aug-2012 |
| MF955234 | FluA_H3N2_HA | A/Hong Kong/CUHK47352/2012(H3N2) | Nov-2012 |
| MF955235 | FluA_H3N2_HA | A/Hong Kong/CUHK62335/2008(H3N2) | Feb-2008 |
| MF955236 | FluA_H3N2_HA | A/Hong Kong/CUHK65310/2008(H3N2) | Mar-2008 |
| MF955237 | FluA_H3N2_HA | A/Hong Kong/CUHK72035/2008(H3N2) | Jul-2008 |
| MF955238 | FluA_H3N2_HA | A/Hong Kong/CUHK61355/2007(H3N2) | Jan-2007 |
| MF955239 | FluA_H3N2_HA | A/Hong Kong/CUHK62203/2007(H3N2) | Feb-2007 |
| MF955240 | FluA_H3N2_HA | A/Hong Kong/CUHK62842/2007(H3N2) | Feb-2007 |
| MF955241 | FluA_H3N2_HA | A/Hong Kong/CUHK35004/2012(H3N2) | May-2012 |
| MF955242 | FluA_H3N2_HA | A/Hong Kong/CUHK72058/2009(H3N2) | May-2009 |
| MF955243 | FluA_H3N2_HA | A/Hong Kong/CUHK39813/2010(H3N2) | Aug-2010 |
| MF955244 | FluA_H3N2_HA | A/Hong Kong/CUHK71449/2009(H3N2) | Apr-2009 |
| MF955245 | FluA_H3N2_HA | A/Hong Kong/CUHK77585/2008(H3N2) | Sep-2008 |
| MF955246 | FluA_H3N2_HA | A/Hong Kong/CUHK66598/2009(H3N2) | Jan-2009 |
| MF955247 | FluA_H3N2_HA | A/Hong Kong/CUHK43402/2010(H3N2) | Oct-2010 |
| MF955248 | FluA_H3N2_HA | A/Hong Kong/CUHK27565/2012(H3N2) | Feb-2012 |
| MF955249 | FluA_H3N2_HA | A/Hong Kong/CUHK33530/2011(H3N2) | Dec-2011 |
| MF955250 | FluA_H3N2_HA | A/Hong Kong/CUHK26783/2011(H3N2) | Aug-2011 |
| MF955251 | FluA_H3N2_HA | A/Hong Kong/CUHK33163/2011(H3N2) | Dec-2011 |
| MF955252 | FluA_H3N2_HA | A/Hong Kong/CUHK66798/2007(H3N2) | Apr-2007 |
| MF955253 | FluA_H3N2_HA | A/Hong Kong/CUHK64331/2007(H3N2) | Mar-2007 |
| MF955254 | FluA_H3N2_HA | A/Hong Kong/CUHK69991/2007(H3N2) | Jun-2007 |
| MF955255 | FluA_H3N2_HA | A/Hong Kong/CUHK74215/2008(H3N2) | Aug-2008 |
| MF955256 | FluA_H3N2_HA | A/Hong Kong/CUHK73440/2008(H3N2) | Jul-2008 |
| MF955257 | FluA_H3N2_HA | A/Hong Kong/CUHK70458/2008(H3N2) | Jun-2008 |
| MF955258 | FluA_H3N2_HA | A/Hong Kong/CUHK72215/2008(H3N2) | Jul-2008 |
| MF955259 | FluA_H3N2_HA | A/Hong Kong/CUHK39450/2012(H3N2) | Jul-2012 |
| MF955260 | FluA_H3N2_HA | A/Hong Kong/CUHK45712/2012(H3N2) | Oct-2012 |
| MF955261 | FluA_H3N2_HA | A/Hong Kong/CUHK15232/1996(H3N2) | Apr-1996 |
| MF955262 | FluA_H3N2_HA | A/Hong Kong/CUHK44756/2010(H3N2) | Nov-2010 |
| MF955263 | FluA_H3N2_HA | A/Hong Kong/CUHK46938/2010(H3N2) | Dec-2010 |
| MF955264 | FluA_H3N2_HA | A/Hong Kong/CUHK32113/2011(H3N2) | Dec-2011 |
| MF955265 | FluA_H3N2_HA | A/Hong Kong/CUHK15308/1996(H3N2) | Apr-1996 |
| MF955266 | FluA_H3N2_HA | A/Hong Kong/CUHK21932/1996(H3N2) | Jun-1996 |
| MF955267 | FluA_H3N2_HA | A/Hong Kong/CUHK29206/1996(H3N2) | Sep-1996 |
| MF955268 | FluA_H3N2_HA | A/Hong Kong/CUHK72075/2009(H3N2) | May-2009 |
| MF955269 | FluA_H3N2_HA | A/Hong Kong/CUHK73167/2009(H3N2) | May-2009 |
| MF955270 | FluA_H3N2_HA | A/Hong Kong/CUHK40227/2010(H3N2) | Sep-2010 |
| MF955271 | FluA_H3N2_HA | A/Hong Kong/CUHK80068/2008(H3N2) | Nov-2008 |
| MF955272 | FluA_H3N2_HA | A/Hong Kong/CUHK59944/2009(H3N2) | May-2009 |
| MF955273 | FluA_H3N2_HA | A/Hong Kong/CUHK67251/2009(H3N2) | Jan-2009 |
| MF955274 | FluA_H3N2_HA | A/Hong Kong/CUHK25423/2011(H3N2) | Jul-2011 |
| MF955275 | FluA_H3N2_HA | A/Hong Kong/CUHK30771/2011(H3N2) | Nov-2011 |
| MF955276 | FluA_H3N2_HA | A/Hong Kong/CUHK31374/2011(H3N2) | Nov-2011 |
| MF955277 | FluA_H3N2_HA | A/Hong Kong/CUHK40759/2010(H3N2) | Sep-2010 |
| MF955278 | FluA_H3N2_HA | A/Hong Kong/CUHK44339/2010(H3N2) | Nov-2010 |
| MF955279 | FluA_H3N2_HA | A/Hong Kong/CUHK23961/2011(H3N2) | Jun-2011 |
| MF955280 | FluA_H3N2_HA | A/Hong Kong/CUHK67413/2008(H3N2) | Apr-2008 |
| MF955281 | FluA_H3N2_HA | A/Hong Kong/CUHK60258/2007(H3N2) | Jan-2007 |
| MF955282 | FluA_H3N2_HA | A/Hong Kong/CUHK62981/2007(H3N2) | Feb-2007 |
| MF955283 | FluA_H3N2_HA | A/Hong Kong/CUHK72228/2007(H3N2) | Jul-2007 |
| MF955284 | FluA_H3N2_HA | A/Hong Kong/CUHK73588/2007(H3N2) | Aug-2007 |
| MF955285 | FluA_H3N2_HA | A/Hong Kong/CUHK66092/2008(H3N2) | Apr-2008 |
| MF955286 | FluA_H3N2_HA | A/Hong Kong/CUHK63130/2007(H3N2) | Feb-2007 |
| MF955287 | FluA_H3N2_HA | A/Hong Kong/CUHK66156/2007(H3N2) | Apr-2007 |
| MF955288 | FluA_H3N2_HA | A/Hong Kong/CUHK71638/2007(H3N2) | Jul-2007 |
| MF955289 | FluA_H3N2_HA | A/Hong Kong/CUHK41897/2010(H3N2) | Sep-2010 |
| MF955290 | FluA_H3N2_HA | A/Hong Kong/CUHK15154/1996(H3N2) | Apr-1996 |
| MF955291 | FluA_H3N2_HA | A/Hong Kong/CUHK21907/1996(H3N2) | Jun-1996 |
| MF955292 | FluA_H3N2_HA | A/Hong Kong/CUHK21971/1996(H3N2) | Jan-1996 |
| MF955293 | FluA_H3N2_HA | A/Hong Kong/CUHK03269/1996(H3N2) | Mar-1996 |
| MF955294 | FluA_H3N2_HA | A/Hong Kong/CUHK38327/2010(H3N2) | Jul-2010 |

| GenBank accession no. | Type | Isolate ID | Collection date |
|-----------------------|--------------|----------------------------------|-----------------|
| MF955295 | FluA_H3N2_HA | A/Hong Kong/CUHK42094/2010(H3N2) | Sep-2010 |
| MF955296 | FluA_H3N2_HA | A/Hong Kong/CUHK20677/2011(H3N2) | Apr-2011 |
| MF955297 | FluA_H3N2_HA | A/Hong Kong/CUHK72474/2008(H3N2) | Jul-2008 |
| MF955298 | FluA_H3N2_HA | A/Hong Kong/CUHK69295/2009(H3N2) | Mar-2009 |
| MF955299 | FluA_H3N2_HA | A/Hong Kong/CUHK36548/2010(H3N2) | Jun-2010 |
| MF955300 | FluA_H3N2_HA | A/Hong Kong/CUHK30631/2012(H3N2) | Mar-2012 |
| MF955301 | FluA_H3N2_HA | A/Hong Kong/CUHK40597/2012(H3N2) | Jul-2012 |
| MF955302 | FluA_H3N2_HA | A/Hong Kong/CUHK41586/2012(H3N2) | Aug-2012 |
| MF955303 | FluA_H3N2_HA | A/Hong Kong/CUHK23993/2011(H3N2) | Jun-2011 |
| MF955304 | FluA_H3N2_HA | A/Hong Kong/CUHK29342/2011(H3N2) | Oct-2011 |
| MF955305 | FluA_H3N2_HA | A/Hong Kong/CUHK28838/2012(H3N2) | Feb-2012 |
| MF955306 | FluA_H3N2_HA | A/Hong Kong/CUHK72836/2008(H3N2) | Jul-2008 |
| MF955307 | FluA_H3N2_HA | A/Hong Kong/CUHK74704/2008(H3N2) | Aug-2008 |
| MF955308 | FluA_H3N2_HA | A/Hong Kong/CUHK67380/2009(H3N2) | Jan-2009 |
| MF955309 | FluA_H3N2_HA | A/Hong Kong/CUHK65050/2007(H3N2) | Mar-2007 |
| MF955310 | FluA_H3N2_HA | A/Hong Kong/CUHK72318/2008(H3N2) | Jul-2008 |
| MF955311 | FluA_H3N2_HA | A/Hong Kong/CUHK39295/2010(H3N2) | Aug-2010 |
| MF955312 | FluA_H3N2_HA | A/Hong Kong/CUHK39459/2010(H3N2) | Aug-2010 |
| MF955313 | FluA_H3N2_HA | A/Hong Kong/CUHK41743/2010(H3N2) | Sep-2010 |
| MF955314 | FluA_H3N2_HA | A/Hong Kong/CUHK68016/2009(H3N2) | Feb-2009 |
| MF955315 | FluA_H3N2_HA | A/Hong Kong/CUHK73723/2009(H3N2) | Jun-2009 |
| MF955316 | FluA_H3N2_HA | A/Hong Kong/CUHK36649/2010(H3N2) | Jun-2010 |
| MF955317 | FluA_H3N2_HA | A/Hong Kong/CUHK14229/2011(H3N2) | Jan-2011 |
| MF955318 | FluA_H3N2_HA | A/Hong Kong/CUHK16933/2011(H3N2) | Feb-2011 |
| MF955319 | FluA_H3N2_HA | A/Hong Kong/CUHK29096/2011(H3N2) | Oct-2011 |
| MF955320 | FluA_H3N2_HA | A/Hong Kong/CUHK73629/2009(H3N2) | Jun-2009 |
| MF955321 | FluA_H3N2_HA | A/Hong Kong/CUHK38606/2010(H3N2) | Aug-2010 |
| MF955322 | FluA_H3N2_HA | A/Hong Kong/CUHK39699/2010(H3N2) | Aug-2010 |
| MF955323 | FluA_H3N2_HA | A/Hong Kong/CUHK28253/2012(H3N2) | Feb-2012 |
| MF955324 | FluA_H3N2_HA | A/Hong Kong/CUHK33681/2012(H3N2) | Apr-2012 |
| MF955325 | FluA_H3N2_HA | A/Hong Kong/CUHK40215/2012(H3N2) | Jul-2012 |
| MF955326 | FluA_H3N2_HA | A/Hong Kong/CUHK31702/2011(H3N2) | Nov-2011 |
| MF955327 | FluA_H3N2_HA | A/Hong Kong/CUHK31982/2011(H3N2) | Nov-2011 |
| MF955328 | FluA_H3N2_HA | A/Hong Kong/CUHK26268/2012(H3N2) | Jan-2012 |
| MF955329 | FluA_H3N2_HA | A/Hong Kong/CUHK72079/2009(H3N2) | May-2009 |
| MF955330 | FluA_H3N2_HA | A/Hong Kong/CUHK63441/2007(H3N2) | Mar-2007 |
| MF955331 | FluA_H3N2_HA | A/Hong Kong/CUHK78641/2008(H3N2) | Oct-2008 |
| MF955332 | FluA_H3N2_HA | A/Hong Kong/CUHK67726/2009(H3N2) | Feb-2009 |
| MF955333 | FluA_H3N2_HA | A/Hong Kong/CUHK70258/2009(H3N2) | Mar-2009 |
| MF955334 | FluA_H3N2_HA | A/Hong Kong/CUHK63676/2007(H3N2) | Mar-2007 |
| MF955335 | FluA_H3N2_HA | A/Hong Kong/CUHK71881/2008(H3N2) | Jul-2008 |
| MF955336 | FluA_H3N2_HA | A/Hong Kong/CUHK73144/2008(H3N2) | Jul-2008 |
| MF955337 | FluA_H3N2_HA | A/Hong Kong/CUHK18334/1996(H3N2) | Jun-1996 |
| MF955338 | FluA_H3N2_HA | A/Hong Kong/CUHK10886/1996(H3N2) | Apr-1996 |
| MF955339 | FluA_H3N2_HA | A/Hong Kong/CUHK29537/2011(H3N2) | Oct-2011 |
| MF955340 | FluA_H3N2_HA | A/Hong Kong/CUHK29782/2011(H3N2) | Oct-2011 |
| MF955341 | FluA_H3N2_HA | A/Hong Kong/CUHK06513/2012(H3N2) | Jan-2012 |
| MF955342 | FluA_H3N2_HA | A/Hong Kong/CUHK24671/2011(H3N2) | Jul-2011 |
| MF955343 | FluA_H3N2_HA | A/Hong Kong/CUHK28795/2011(H3N2) | Sep-2011 |
| MF955344 | FluA_H3N2_HA | A/Hong Kong/CUHK28994/2011(H3N2) | Oct-2011 |
| MF955345 | FluA_H3N2_HA | A/Hong Kong/CUHK48508/2012(H3N2) | Dec-2012 |
| MF955346 | FluA_H3N2_HA | A/Hong Kong/CUHK10954/1996(H3N2) | Apr-1996 |
| MF955347 | FluA_H3N2_HA | A/Hong Kong/CUHK18325/1996(H3N2) | Jun-1996 |
| MF955348 | FluA_H3N2_HA | A/Hong Kong/CUHK26560/2012(H3N2) | Jan-2012 |
| MF955349 | FluA_H3N2_HA | A/Hong Kong/CUHK37322/2012(H3N2) | Jun-2012 |
| MF955350 | FluA_H3N2_HA | A/Hong Kong/CUHK38000/2012(H3N2) | Jun-2012 |
| MF955351 | FluA_H3N2_HA | A/Hong Kong/CUHK45722/2010(H3N2) | Dec-2010 |
| MF955352 | FluA_H3N2_HA | A/Hong Kong/CUHK69107/2007(H3N2) | Jun-2007 |
| MF955353 | FluA_H3N2_HA | A/Hong Kong/CUHK60906/2008(H3N2) | Jan-2008 |
| MF955354 | FluA_H3N2_HA | A/Hong Kong/CUHK77209/2008(H3N2) | Aug-2008 |
| MF955355 | FluA_H3N2_HA | A/Hong Kong/CUHK65249/2007(H3N2) | Mar-2007 |
| MF955356 | FluA_H3N2_HA | A/Hong Kong/CUHK68205/2007(H3N2) | May-2007 |
| MF955357 | FluA_H3N2_HA | A/Hong Kong/CUHK41034/2010(H3N2) | Sep-2010 |
| MF955358 | FluA_H3N2_HA | A/Hong Kong/CUHK42370/2010(H3N2) | Oct-2010 |
| MF955359 | FluA_H3N2_HA | A/Hong Kong/CUHK42691/2010(H3N2) | Oct-2010 |
| MF955360 | FluA_H3N2_HA | A/Hong Kong/CUHK66835/2009(H3N2) | Jan-2009 |
| MF955361 | FluA_H3N2_HA | A/Hong Kong/CUHK37893/2010(H3N2) | Jul-2010 |
| MF955362 | FluA_H3N2_HA | A/Hong Kong/CUHK39965/2010(H3N2) | Aug-2010 |
| MF955363 | FluA_H3N2_HA | A/Hong Kong/CUHK32581/2012(H3N2) | Apr-2012 |

| GenBank accession no. | Type | Isolate ID | Collection date |
|-----------------------|--------------|----------------------------------|-----------------|
| MF955364 | FluA_H3N2_HA | A/Hong Kong/CUHK10821/1996(H3N2) | Apr-1996 |
| MF955365 | FluA_H3N2_HA | A/Hong Kong/CUHK30085/2012(H3N2) | Mar-2012 |
| MF955366 | FluA_H3N2_HA | A/Hong Kong/CUHK33255/2012(H3N2) | Apr-2012 |
| MF955367 | FluA_H3N2_HA | A/Hong Kong/CUHK34445/2012(H3N2) | May-2012 |
| MF955368 | FluA_H3N2_HA | A/Hong Kong/CUHK71868/2009(H3N2) | Apr-2009 |
| MF955369 | FluA_H3N2_HA | A/Hong Kong/CUHK38864/2010(H3N2) | Aug-2010 |
| MF955370 | FluA_H3N2_HA | A/Hong Kong/CUHK40637/2010(H3N2) | Sep-2010 |
| MF955371 | FluA_H3N2_HA | A/Hong Kong/CUHK15321/1996(H3N2) | May-1996 |
| MF955372 | FluA_H3N2_HA | A/Hong Kong/CUHK15361/1996(H3N2) | May-1996 |
| MF955373 | FluA_H3N2_HA | A/Hong Kong/CUHK18255/1996(H3N2) | Jun-1996 |
| MF955374 | FluA_H3N2_HA | A/Hong Kong/CUHK43137/2012(H3N2) | Sep-2012 |
| MF955375 | FluA_H3N2_HA | A/Hong Kong/CUHK10905/1996(H3N2) | Apr-1996 |
| MF955376 | FluA_H3N2_HA | A/Hong Kong/CUHK10930/1996(H3N2) | Apr-1996 |
| MF955377 | FluA_H3N2_HA | A/Hong Kong/CUHK70905/2009(H3N2) | Apr-2009 |
| MF955378 | FluA_H3N2_HA | A/Hong Kong/CUHK70481/2007(H3N2) | Jun-2007 |
| MF955379 | FluA_H3N2_HA | A/Hong Kong/CUHK70672/2007(H3N2) | Jun-2007 |
| MF955380 | FluA_H3N2_HA | A/Hong Kong/CUHK71333/2007(H3N2) | Jul-2007 |
| MF955381 | FluA_H3N2_HA | A/Hong Kong/CUHK67465/2007(H3N2) | May-2007 |
| MF955382 | FluA_H3N2_HA | A/Hong Kong/CUHK70137/2007(H3N2) | Jun-2007 |
| MF955383 | FluA_H3N2_HA | A/Hong Kong/CUHK66547/2009(H3N2) | Jan-2009 |
| MF955384 | FluA_H3N2_HA | A/Hong Kong/CUHK68649/2009(H3N2) | Feb-2009 |
| MF955385 | FluA_H3N2_HA | A/Hong Kong/CUHK70803/2009(H3N2) | Apr-2009 |
| MF955386 | FluA_H3N2_HA | A/Hong Kong/CUHK64533/2008(H3N2) | Mar-2008 |
| MF955387 | FluA_H3N2_HA | A/Hong Kong/CUHK73085/2008(H3N2) | Jul-2008 |
| MF955388 | FluA_H3N2_HA | A/Hong Kong/CUHK82526/2008(H3N2) | Dec-2008 |
| MF955389 | FluA_H3N2_HA | A/Hong Kong/CUHK13623/2011(H3N2) | Jan-2011 |
| MF955390 | FluA_H3N2_HA | A/Hong Kong/CUHK10992/1996(H3N2) | Apr-1996 |
| MF955391 | FluA_H3N2_HA | A/Hong Kong/CUHK15208/1996(H3N2) | Apr-1996 |
| MF955392 | FluA_H3N2_HA | A/Hong Kong/CUHK26553/1996(H3N2) | Aug-1996 |
| MF955393 | FluA_H3N2_HA | A/Hong Kong/CUHK10715/1996(H3N2) | Mar-1996 |
| MF955394 | FluA_H3N2_HA | A/Hong Kong/CUHK10922/1996(H3N2) | Apr-1996 |
| MF955395 | FluA_H3N2_HA | A/Hong Kong/CUHK10970/1996(H3N2) | Apr-1996 |
| MF955396 | FluA_H3N2_HA | A/Hong Kong/CUHK64597/2007(H3N2) | Mar-2007 |
| MF955397 | FluA_H3N2_HA | A/Hong Kong/CUHK71129/2007(H3N2) | Jun-2007 |
| MF955398 | FluA_H3N2_HA | A/Hong Kong/CUHK72743/2007(H3N2) | Jul-2007 |
| MF955399 | FluA_H3N2_HA | A/Hong Kong/CUHK62440/2007(H3N2) | Feb-2007 |
| MF955400 | FluA_H3N2_HA | A/Hong Kong/CUHK62789/2007(H3N2) | Feb-2007 |
| MF955401 | FluA_H3N2_HA | A/Hong Kong/CUHK63295/2007(H3N2) | Feb-2007 |
| MF955402 | FluA_H3N2_HA | A/Hong Kong/CUHK73649/2009(H3N2) | Jun-2009 |
| MF955403 | FluA_H3N2_HA | A/Hong Kong/CUHK40492/2010(H3N2) | Sep-2010 |
| MF955404 | FluA_H3N2_HA | A/Hong Kong/CUHK43136/2010(H3N2) | Oct-2010 |
| MF955405 | FluA_H3N2_HA | A/Hong Kong/CUHK72991/2008(H3N2) | Jul-2008 |
| MF955406 | FluA_H3N2_HA | A/Hong Kong/CUHK68236/2009(H3N2) | Feb-2009 |
| MF955407 | FluA_H3N2_HA | A/Hong Kong/CUHK73480/2009(H3N2) | Jun-2009 |
| MF955408 | FluA_H3N2_HA | A/Hong Kong/CUHK61864/2007(H3N2) | Feb-2007 |
| MF955409 | FluB_HA | B/Hong Kong/CUHK954/1997 | Feb-1997 |
| MF955410 | FluB_HA | B/Hong Kong/CUHK5911/2002 | Jan-2002 |
| MF955411 | FluB_HA | B/Hong Kong/CUHK65229/2007 | Mar-2007 |
| MF955412 | FluB_HA | B/Hong Kong/CUHK47908/2012 | Nov-2012 |
| MF955413 | FluB_HA | B/Hong Kong/CUHK33652/2011 | Dec-2011 |
| MF955414 | FluB_HA | B/Hong Kong/CUHK15535/1998 | Jun-1998 |
| MF955415 | FluB_HA | B/Hong Kong/CUHK64639/2008 | Mar-2008 |
| MF955416 | FluB_HA | B/Hong Kong/CUHK10649/1996 | Mar-1996 |
| MF955417 | FluB_HA | B/Hong Kong/CUHK27358/2010 | Feb-2010 |
| MF955418 | FluB_HA | B/Hong Kong/CUHK50687/2004 | Jul-2004 |
| MF955419 | FluB_HA | B/Hong Kong/CUHK74303/2007 | Aug-2007 |
| MF955420 | FluB_HA | B/Hong Kong/CUHK13967 /1999 | May-1999 |
| MF955421 | FluB_HA | B/Hong Kong/CUHK33668/2012 | Apr-2012 |
| MF955422 | FluB_HA | B/Hong Kong/CUHK33761/2012 | Apr-2012 |
| MF955423 | FluB_HA | B/Hong Kong/CUHK21897/1996 | Jun-1996 |
| MF955424 | FluB_HA | B/Hong Kong/CUHK15517 /1998 | Jun-1998 |
| MF955425 | FluB_HA | B/Hong Kong/CUHK50325/2002 | Oct-2002 |
| MF955426 | FluB_HA | B/Hong Kong/CUHK11835/1999 | Mar-1999 |
| MF955427 | FluB_HA | B/Hong Kong/CUHK39404/2010 | Aug-2010 |
| MF955428 | FluB_HA | B/Hong Kong/CUHK46712/2010 | Dec-2010 |
| MF955429 | FluB_HA | B/Hong Kong/CUHK45711/2000 | Nov-2000 |
| MF955430 | FluB_HA | B/Hong Kong/CUHK65888/2008 | Apr-2008 |
| MF955431 | FluB_HA | B/Hong Kong/CUHK16551/1998 | Jul-1998 |
| MF955432 | FluB_HA | B/Hong Kong/CUHK62733/2008 | Feb-2008 |

| GenBank accession no. | Type | Isolate ID | Collection date |
|-----------------------|---------|-----------------------------|-----------------|
| MF955433 | FluB_HA | B/Hong Kong/CUHK11995/1999 | Mar-1999 |
| MF955434 | FluB_HA | B/Hong Kong/CUHK63933/2007 | Mar-2007 |
| MF955435 | FluB_HA | B/Hong Kong/CUHK29315/2012 | Mar-2012 |
| MF955436 | FluB_HA | B/Hong Kong/CUHK46202/2010 | Dec-2010 |
| MF955437 | FluB_HA | B/Hong Kong/CUHK16087/1998 | Jun-1998 |
| MF955438 | FluB_HA | B/Hong Kong/CUHK16854/1998 | Jul-1998 |
| MF955439 | FluB_HA | B/Hong Kong/CUHK15855/1998 | Jun-1998 |
| MF955440 | FluB_HA | B/Hong Kong/CUHK45550/2000 | Nov-2000 |
| MF955441 | FluB_HA | B/Hong Kong/CUHK052533/2000 | Dec-2000 |
| MF955442 | FluB_HA | B/Hong Kong/CUHK6030/2001 | Feb-2001 |
| MF955443 | FluB_HA | B/Hong Kong/CUHK30662/2011 | Nov-2011 |
| MF955444 | FluB_HA | B/Hong Kong/CUHK51180/2002 | Oct-2002 |
| MF955445 | FluB_HA | B/Hong Kong/CUHK18357/1996 | Jun-1996 |
| MF955446 | FluB_HA | B/Hong Kong/CUHK460/1997 | Jan-1997 |
| MF955447 | FluB_HA | B/Hong Kong/CUHK17239/1998 | Jul-1998 |
| MF955448 | FluB_HA | B/Hong Kong/CUHK16953/1998 | Jul-1998 |
| MF955449 | FluB_HA | B/Hong Kong/CUHK11868/1999 | Mar-1999 |
| MF955450 | FluB_HA | B/Hong Kong/CUHK5724/2003 | Jan-2003 |
| MF955451 | FluB_HA | B/Hong Kong/CUHK51404/2004 | Jul-2004 |
| MF955452 | FluB_HA | B/Hong Kong/CUHK9350/2005 | Mar-2005 |
| MF955453 | FluB_HA | B/Hong Kong/CUHK42989 /2007 | Sep-2007 |
| MF955454 | FluB_HA | B/Hong Kong/CUHK24560/2000 | May-2000 |
| MF955455 | FluB_HA | B/Hong Kong/CUHK22392/2000 | Mar-2000 |
| MF955456 | FluB_HA | B/Hong Kong/CUHK52005/2000 | Dec-2000 |
| MF955457 | FluB_HA | B/Hong Kong/CUHK12003 /1999 | Mar-1999 |
| MF955458 | FluB_HA | B/Hong Kong/CUHK14124/1999 | May-1999 |
| MF955459 | FluB_HA | B/Hong Kong/CUHK23174/2000 | Mar-2000 |
| MF955460 | FluB_HA | B/Hong Kong/CUHK22465/2001 | May-2001 |
| MF955461 | FluB_HA | B/Hong Kong/CUHK51178/2002 | Oct-2002 |
| MF955462 | FluB_HA | B/Hong Kong/CUHK22741/2001 | May-2001 |
| MF955463 | FluB_HA | B/Hong Kong/CUHK23356/2000 | Apr-2000 |
| MF955464 | FluB_HA | B/Hong Kong/CUHK6611/2003 | Feb-2003 |
| MF955465 | FluB_HA | B/Hong Kong/CUHK21447/2003 | Mar-2003 |
| MF955466 | FluB_HA | B/Hong Kong/CUHK52370/2004 | Aug-2004 |
| MF955467 | FluB_HA | B/Hong Kong/CUHK13481/2003 | Mar-2003 |
| MF955468 | FluB_HA | B/Hong Kong/CUHK16575/1998 | Jul-1998 |
| MF955469 | FluB_HA | B/Hong Kong/CUHK17605/1998 | Aug-1998 |
| MF955470 | FluB_HA | B/Hong Kong/CUHK26127/1996 | Jul-1996 |
| MF955471 | FluB_HA | B/Hong Kong/CUHK4120/1997 | Mar-1997 |
| MF955472 | FluB_HA | B/Hong Kong/CUHK29309 /2000 | Oct-2000 |
| MF955473 | FluB_HA | B/Hong Kong/CUHK14186/1999 | May-1999 |
| MF955474 | FluB_HA | B/Hong Kong/CUHK22706/2000 | Feb-2000 |
| MF955475 | FluB_HA | B/Hong Kong/CUHK23143/2011 | Jun-2011 |
| MF955476 | FluB_HA | B/Hong Kong/CUHK31852/2011 | Nov-2011 |
| MF955477 | FluB_HA | B/Hong Kong/CUHK14156/2011 | Jan-2011 |
| MF955478 | FluB_HA | B/Hong Kong/CUHK43211/2010 | Oct-2010 |
| MF955479 | FluB_HA | B/Hong Kong/CUHK4348/1997 | Mar-1997 |
| MF955480 | FluB_HA | B/Hong Kong/CUHK16076/1998 | Jun-1998 |
| MF955481 | FluB_HA | B/Hong Kong/CUHK10823/1996 | Apr-1996 |
| MF955482 | FluB_HA | B/Hong Kong/CUHK10549/1996 | Mar-1996 |
| MF955483 | FluB_HA | B/Hong Kong/CUHK18268/1996 | Jun-1996 |
| MF955484 | FluB_HA | B/Hong Kong/CUHK33955/2010 | May-2010 |
| MF955485 | FluB_HA | B/Hong Kong/CUHK12338/2005 | May-2005 |
| MF955486 | FluB_HA | B/Hong Kong/CUHK26813/2010 | Jan-2010 |
| MF955487 | FluB_HA | B/Hong Kong/CUHK66047/2008 | Apr-2008 |
| MF955488 | FluB_HA | B/Hong Kong/CUHK63322/2008 | Feb-2008 |
| MF955489 | FluB_HA | B/Hong Kong/CUHK64419/2008 | Mar-2008 |
| MF955490 | FluB_HA | B/Hong Kong/CUHK32498 /2012 | Apr-2012 |
| MF955491 | FluB_HA | B/Hong Kong/CUHK33099/2012 | Apr-2012 |
| MF955492 | FluB_HA | B/Hong Kong/CUHK30032/2012 | Mar-2012 |
| MF955493 | FluB_HA | B/Hong Kong/CUHK23377/2011 | Jun-2011 |
| MF955494 | FluB_HA | B/Hong Kong/CUHK29189/2012 | Feb-2012 |
| MF955495 | FluB_HA | B/Hong Kong/CUHK33106/2012 | Apr-2012 |
| MF955496 | FluB_HA | B/Hong Kong/CUHK5806/2001 | Jan-2001 |
| MF955497 | FluB_HA | B/Hong Kong/CUHK11672/1999 | Feb-1999 |
| MF955498 | FluB_HA | B/Hong Kong/CUHK10656 /1996 | Mar-1996 |
| MF955499 | FluB_HA | B/Hong Kong/CUHK16364/1998 | Jul-1998 |
| MF955500 | FluB_HA | B/Hong Kong/CUHK21441/2011 | May-2011 |
| MF955501 | FluB_HA | B/Hong Kong/CUHK63615/2008 | Mar-2008 |

| GenBank accession no. | Type | Isolate ID | Collection date |
|-----------------------|---------|-----------------------------|-----------------|
| MF955502 | FluB_HA | B/Hong Kong/CUHK42491 /2007 | Sep-2007 |
| MF955503 | FluB_HA | B/Hong Kong/CUHK46173/2007 | Nov-2007 |
| MF955504 | FluB_HA | B/Hong Kong/CUHK66994/2007 | Apr-2007 |
| MF955505 | FluB_HA | B/Hong Kong/CUHK64081/2008 | Mar-2008 |
| MF955506 | FluB_HA | B/Hong Kong/CUHK18490/2011 | Mar-2011 |
| MF955507 | FluB_HA | B/Hong Kong/CUHK18864/2011 | Mar-2011 |
| MF955508 | FluB_HA | B/Hong Kong/CUHK18038/2011 | Mar-2011 |
| MF955509 | FluB_HA | B/Hong Kong/CUHK62171/2008 | Feb-2008 |
| MF955510 | FluB_HA | B/Hong Kong/CUHK42224/2010 | Sep-2010 |
| MF955511 | FluB_HA | B/Hong Kong/CUHK39840/2010 | Aug-2010 |
| MF955512 | FluB_HA | B/Hong Kong/CUHK39777/2012 | Jul-2012 |
| MF955513 | FluB_HA | B/Hong Kong/CUHK32603/2012 | Apr-2012 |
| MF955514 | FluB_HA | B/Hong Kong/CUHK27780/2011 | Sep-2011 |
| MF955515 | FluB_HA | B/Hong Kong/CUHK22445/2011 | May-2011 |
| MF955516 | FluB_HA | B/Hong Kong/CUHK24205/2011 | Jul-2011 |
| MF955517 | FluB_HA | B/Hong Kong/CUHK51509/2002 | Nov-2002 |
| MF955518 | FluB_HA | B/Hong Kong/CUHK6570/2003 | Feb-2003 |
| MF955519 | FluB_HA | B/Hong Kong/CUHK35565/2002 | Sep-2002 |
| MF955520 | FluB_HA | B/Hong Kong/CUHK13802/2001 | Mar-2001 |
| MF955521 | FluB_HA | B/Hong Kong/CUHK653/1997 | Feb-1997 |
| MF955522 | FluB_HA | B/Hong Kong/CUHK4029/1997 | Mar-1997 |
| MF955523 | FluB_HA | B/Hong Kong/CUHK21776/1996 | Jun-1996 |
| MF955524 | FluB_HA | B/Hong Kong/CUHK26643 /2012 | Jan-2012 |
| MF955525 | FluB_HA | B/Hong Kong/CUHK10966/1996 | Apr-1996 |
| MF955526 | FluB_HA | B/Hong Kong/CUHK4372/1997 | Mar-1997 |
| MF955527 | FluB_HA | B/Hong Kong/CUHK11944/1999 | Mar-1999 |
| MF955528 | FluB_HA | B/Hong Kong/CUHK11877 /1999 | Mar-1999 |
| MF955529 | FluB_HA | B/Hong Kong/CUHK11930/1999 | Mar-1999 |
| MF955530 | FluB_HA | B/Hong Kong/CUHK18313/1998 | Sep-1998 |
| MF955531 | FluB_HA | B/Hong Kong/CUHK11073/1999 | Feb-1999 |
| MF955532 | FluB_HA | B/Hong Kong/CUHK25187/2011 | Jul-2011 |
| MF955533 | FluB_HA | B/Hong Kong/CUHK66139/2007 | Apr-2007 |
| MF955534 | FluB_HA | B/Hong Kong/CUHK71746/2007 | Jul-2007 |
| MF955535 | FluB_HA | B/Hong Kong/CUHK68911/2008 | May-2008 |
| MF955536 | FluB_HA | B/Hong Kong/CUHK32249/2011 | Dec-2011 |
| MF955537 | FluB_HA | B/Hong Kong/CUHK18142/2011 | Mar-2011 |
| MF955538 | FluB_HA | B/Hong Kong/CUHK63456/2008 | Mar-2008 |
| MF955539 | FluB_HA | B/Hong Kong/CUHK37722/2010 | Jul-2010 |
| MF955540 | FluB_HA | B/Hong Kong/CUHK43052/2005 | Jul-2005 |
| MF955541 | FluB_HA | B/Hong Kong/CUHK52158/2004 | Aug-2004 |
| MF955542 | FluB_HA | B/Hong Kong/CUHK51212 /2004 | Jul-2004 |
| MF955543 | FluB_HA | B/Hong Kong/CUHK53074/2006 | Mar-2006 |
| MF955544 | FluB_HA | B/Hong Kong/CUHK52093/2004 | Aug-2004 |
| MF955545 | FluB_HA | B/Hong Kong/CUHK21967/2000 | Feb-2000 |
| MF955546 | FluB_HA | B/Hong Kong/CUHK30004/1999 | Jun-1999 |
| MF955547 | FluB_HA | B/Hong Kong/CUHK20636/2000 | Jan-2000 |
| MF955548 | FluB_HA | B/Hong Kong/CUHK13275/2002 | Mar-2002 |
| MF955549 | FluB_HA | B/Hong Kong/CUHK10669/1996 | Mar-1996 |
| MF955550 | FluB_HA | B/Hong Kong/CUHK4187/1997 | Mar-1997 |
| MF955551 | FluB_HA | B/Hong Kong/CUHK4259/1997 | Mar-1997 |
| MF955552 | FluB_HA | B/Hong Kong/CUHK4022/1997 | Mar-1997 |
| MF955553 | FluB_HA | B/Hong Kong/CUHK740/1997 | Feb-1997 |
| MF955554 | FluB_HA | B/Hong Kong/CUHK4008/1997 | Mar-1997 |
| MF955555 | FluB_HA | B/Hong Kong/CUHK18502/1998 | Sep-1998 |
| MF955556 | FluB_HA | B/Hong Kong/CUHK14952 /1999 | Jun-1999 |
| MF955557 | FluB_HA | B/Hong Kong/CUHK30046 /1999 | Jun-1999 |
| MF955558 | FluB_HA | B/Hong Kong/CUHK10906/1999 | Feb-1999 |
| MF955559 | FluB_HA | B/Hong Kong/CUHK11988 /1999 | Mar-1999 |
| MF955560 | FluB_HA | B/Hong Kong/CUHK10724/1996 | Mar-1996 |
| MF955561 | FluB_HA | B/Hong Kong/CUHK40333/2010 | Sep-2010 |
| MF955562 | FluB_HA | B/Hong Kong/CUHK13314 /2011 | Jan-2011 |
| MF955563 | FluB_HA | B/Hong Kong/CUHK44277/2010 | Nov-2010 |
| MF955564 | FluB_HA | B/Hong Kong/CUHK16218/2011 | Feb-2011 |
| MF955565 | FluB_HA | B/Hong Kong/CUHK27583/2012 | Feb-2012 |
| MF955566 | FluB_HA | B/Hong Kong/CUHK10701/1996 | Mar-1996 |
| MF955567 | FluB_HA | B/Hong Kong/CUHK26627/2012 | Jan-2012 |
| MF955568 | FluB_HA | B/Hong Kong/CUHK22381/2011 | May-2011 |
| MF955569 | FluB_HA | B/Hong Kong/CUHK24779 /2011 | Jul-2011 |
| MF955570 | FluB_HA | B/Hong Kong/CUHK22332/2003 | Mar-2003 |

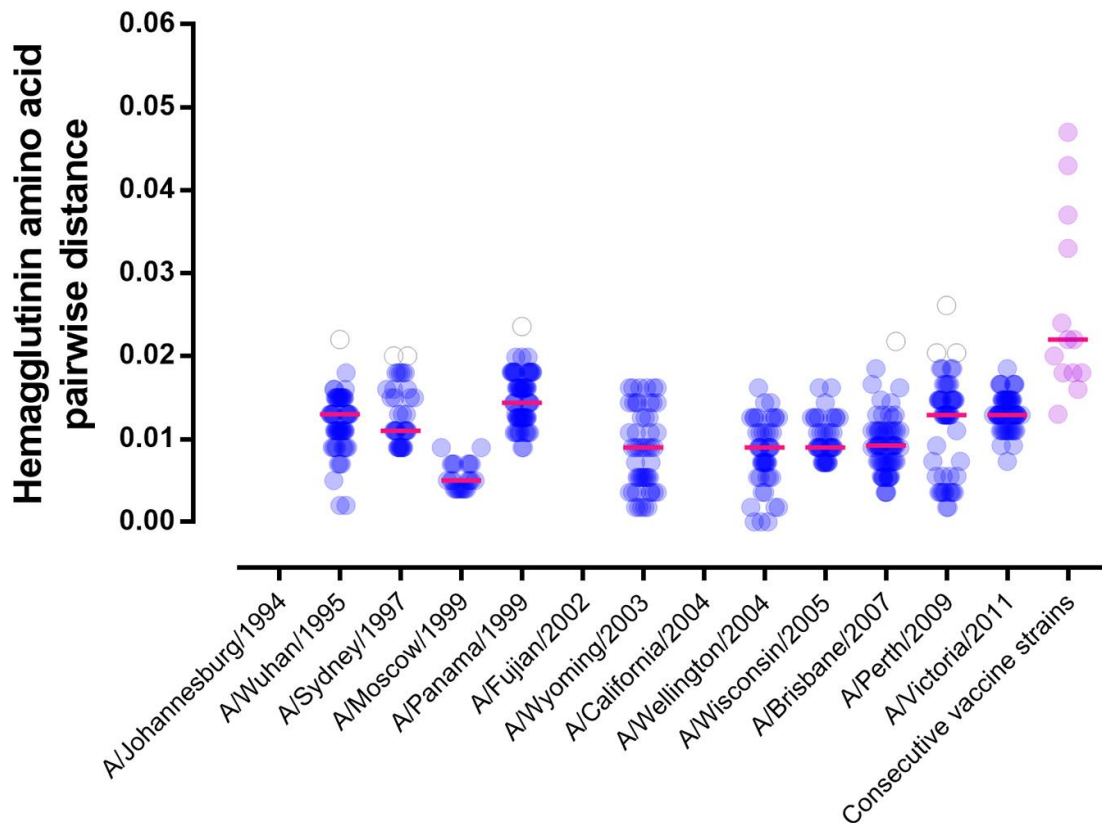
| GenBank accession no. | Type | Isolate ID | Collection date |
|-----------------------|---------|-----------------------------|-----------------|
| MF955571 | FluB_HA | B/Hong Kong/CUHK51098/2004 | Jul-2004 |
| MF955572 | FluB_HA | B/Hong Kong/CUHK57325/2006 | May-2006 |
| MF955573 | FluB_HA | B/Hong Kong/CUHK22674/2001 | May-2001 |
| MF955574 | FluB_HA | B/Hong Kong/CUHK5815/2001 | Jan-2001 |
| MF955575 | FluB_HA | B/Hong Kong/CUHK22878/2002 | May-2002 |
| MF955576 | FluB_HA | B/Hong Kong/CUHK6649/2002 | Feb-2002 |
| MF955577 | FluB_HA | B/Hong Kong/CUHK5696/2001 | Jan-2001 |
| MF955578 | FluB_HA | B/Hong Kong/CUHK6335/2002 | Feb-2002 |
| MF955579 | FluB_HA | B/Hong Kong/CUHK23689/2000 | Apr-2000 |
| MF955580 | FluB_HA | B/Hong Kong/CUHK27366/2000 | Aug-2000 |
| MF955581 | FluB_HA | B/Hong Kong/CUHK11665/1999 | Feb-1999 |
| MF955582 | FluB_HA | B/Hong Kong/CUHK14563/1999 | Jun-1999 |
| MF955583 | FluB_HA | B/Hong Kong/CUHK13246/2002 | Mar-2002 |
| MF955584 | FluB_HA | B/Hong Kong/CUHK23440/2002 | May-2002 |
| MF955585 | FluB_HA | B/Hong Kong/CUHK21724/2002 | Apr-2002 |
| MF955586 | FluB_HA | B/Hong Kong/CUHK22825/2001 | May-2001 |
| MF955587 | FluB_HA | B/Hong Kong/CUHK6935/2002 | Feb-2002 |
| MF955588 | FluB_HA | B/Hong Kong/CUHK18145/1998 | Sep-1998 |
| MF955589 | FluB_HA | B/Hong Kong/CUHK10522/1996 | Mar-1996 |
| MF955590 | FluB_HA | B/Hong Kong/CUHK10806/1996 | Apr-1996 |
| MF955591 | FluB_HA | B/Hong Kong/CUHK3469/1996 | Mar-1996 |
| MF955592 | FluB_HA | B/Hong Kong/CUHK2829/1996 | Jan-1996 |
| MF955593 | FluB_HA | B/Hong Kong/CUHK3445/1996 | Mar-1996 |
| MF955594 | FluB_HA | B/Hong Kong/CUHK721/1997 | Feb-1997 |
| MF955595 | FluB_HA | B/Hong Kong/CUHK18654/1998 | Sep-1998 |
| MF955596 | FluB_HA | B/Hong Kong/CUHK15890/1998 | Jun-1998 |
| MF955597 | FluB_HA | B/Hong Kong/CUHK17459/1998 | Aug-1998 |
| MF955598 | FluB_HA | B/Hong Kong/CUHK4261/1997 | Mar-1997 |
| MF955599 | FluB_HA | B/Hong Kong/CUHK4304/1997 | Mar-1997 |
| MF955600 | FluB_HA | B/Hong Kong/CUHK52533/2004 | Aug-2004 |
| MF955601 | FluB_HA | B/Hong Kong/CUHK52708/2004 | Aug-2004 |
| MF955602 | FluB_HA | B/Hong Kong/CUHK52437/2004 | Aug-2004 |
| MF955603 | FluB_HA | B/Hong Kong/CUHK52248 /2006 | Feb-2006 |
| MF955604 | FluB_HA | B/Hong Kong/CUHK68586/2007 | May-2007 |
| MF955605 | FluB_HA | B/Hong Kong/CUHK67604/2007 | May-2007 |
| MF955606 | FluB_HA | B/Hong Kong/CUHK50698 /2006 | Jan-2006 |
| MF955607 | FluB_HA | B/Hong Kong/CUHK52419/2004 | Aug-2004 |
| MF955608 | FluB_HA | B/Hong Kong/CUHK34606/2002 | Aug-2002 |
| MF955609 | FluB_HA | B/Hong Kong/CUHK24152/2002 | Jun-2002 |
| MF955610 | FluB_HA | B/Hong Kong/CUHK6521/2003 | Feb-2003 |
| MF955611 | FluB_HA | B/Hong Kong/CUHK13268/2003 | Feb-2003 |
| MF955612 | FluB_HA | B/Hong Kong/CUHK5672/2003 | Jan-2003 |
| MF955613 | FluB_HA | B/Hong Kong/CUHK6681/2003 | Feb-2003 |
| MF955614 | FluB_HA | B/Hong Kong/CUHK22432/2002 | Apr-2002 |
| MF955615 | FluB_HA | B/Hong Kong/CUHK52912/2000 | Dec-2000 |
| MF955616 | FluB_HA | B/Hong Kong/CUHK8835/2005 | Mar-2005 |
| MF955617 | FluB_HA | B/Hong Kong/CUHK52684/2004 | Aug-2004 |
| MF955618 | FluB_HA | B/Hong Kong/CUHK52196 /2004 | Aug-2004 |
| MF955619 | FluB_HA | B/Hong Kong/CUHK23890 /2000 | Apr-2000 |
| MF955620 | FluB_HA | B/Hong Kong/CUHK16057/1998 | Jun-1998 |
| MF955621 | FluB_HA | B/Hong Kong/CUHK16801/1998 | Jul-1998 |
| MF955622 | FluB_HA | B/Hong Kong/CUHK4232/1997 | Mar-1997 |
| MF955623 | FluB_HA | B/Hong Kong/CUHK532/1997 | Jan-1997 |
| MF955624 | FluB_HA | B/Hong Kong/CUHK939/1997 | Feb-1997 |
| MF955625 | FluB_HA | B/Hong Kong/CUHK17447/1998 | Aug-1998 |
| MF955626 | FluB_HA | B/Hong Kong/CUHK52212/2000 | Dec-2000 |
| MF955627 | FluB_HA | B/Hong Kong/CUHK20580/2000 | Jan-2000 |
| MF955628 | FluB_HA | B/Hong Kong/CUHK14181 /1999 | May-1999 |
| MF955629 | FluB_HA | B/Hong Kong/CUHK18025 /1998 | Aug-1998 |
| MF955630 | FluB_HA | B/Hong Kong/CUHK14449/1999 | Jun-1999 |
| MF955631 | FluB_HA | B/Hong Kong/CUHK29311/2011 | Oct-2011 |
| MF955632 | FluB_HA | B/Hong Kong/CUHK33217/2011 | Dec-2011 |
| MF955633 | FluB_HA | B/Hong Kong/CUHK28674/2011 | Sep-2011 |
| MF955634 | FluB_HA | B/Hong Kong/CUHK16069/2011 | Feb-2011 |
| MF955635 | FluB_HA | B/Hong Kong/CUHK25561/2011 | Jul-2011 |
| MF955636 | FluB_HA | B/Hong Kong/CUHK30018/2012 | Mar-2012 |
| MF955637 | FluB_HA | B/Hong Kong/CUHK3472/1996 | Mar-1996 |
| MF955638 | FluB_HA | B/Hong Kong/CUHK10610/1996 | Mar-1996 |
| MF955639 | FluB_HA | B/Hong Kong/CUHK3331/1996 | Mar-1996 |

| GenBank accession no. | Type | Isolate ID | Collection date |
|-----------------------|---------|-----------------------------|-----------------|
| MF955640 | FluB_HA | B/Hong Kong/CUHK30694/2012 | Mar-2012 |
| MF955641 | FluB_HA | B/Hong Kong/CUHK34334/2012 | May-2012 |
| MF955642 | FluB_HA | B/Hong Kong/CUHK44360/2007 | Oct-2007 |
| MF955643 | FluB_HA | B/Hong Kong/CUHK29953/2010 | Mar-2010 |
| MF955644 | FluB_HA | B/Hong Kong/CUHK61550/2007 | Jan-2007 |
| MF955645 | FluB_HA | B/Hong Kong/CUHK31105/2011 | Nov-2011 |
| MF955646 | FluB_HA | B/Hong Kong/CUHK67267/2012 | Jan-2012 |
| MF955647 | FluB_HA | B/Hong Kong/CUHK27078/2011 | Aug-2011 |
| MF955648 | FluB_HA | B/Hong Kong/CUHK39059/2010 | Aug-2010 |
| MF955649 | FluB_HA | B/Hong Kong/CUHK36243/2012 | May-2012 |
| MF955650 | FluB_HA | B/Hong Kong/CUHK29160/1996 | Aug-1996 |
| MF955651 | FluB_HA | B/Hong Kong/CUHK16792/1998 | Jul-1998 |
| MF955652 | FluB_HA | B/Hong Kong/CUHK28577/1996 | Aug-1996 |
| MF955653 | FluB_HA | B/Hong Kong/CUHK48264/2012 | Dec-2012 |
| MF955654 | FluB_HA | B/Hong Kong/CUHK30062/2012 | Mar-2012 |
| MF955655 | FluB_HA | B/Hong Kong/CUHK37079/2010 | Jun-2010 |
| MF955656 | FluB_HA | B/Hong Kong/CUHK71157/2007 | Jul-2007 |
| MF955657 | FluB_HA | B/Hong Kong/CUHK47768/2007 | Dec-2007 |
| MF955658 | FluB_HA | B/Hong Kong/CUHK72892/2007 | Jul-2007 |
| MF955659 | FluB_HA | B/Hong Kong/CUHK64525/2007 | Mar-2007 |
| MF955660 | FluB_HA | B/Hong Kong/CUHK68325/2007 | May-2007 |
| MF955661 | FluB_HA | B/Hong Kong/CUHK35400/2010 | May-2010 |
| MF955662 | FluB_HA | B/Hong Kong/CUHK67554/2008 | Apr-2008 |
| MF955663 | FluB_HA | B/Hong Kong/CUHK67100 /2008 | Apr-2008 |
| MF955664 | FluB_HA | B/Hong Kong/CUHK69311/2007 | Jun-2007 |
| MF955665 | FluB_HA | B/Hong Kong/CUHK57526/2006 | May-2006 |
| MF955666 | FluB_HA | B/Hong Kong/CUHK8074/2005 | Mar-2005 |
| MF955667 | FluB_HA | B/Hong Kong/CUHK30407/2011 | Oct-2011 |
| MF955668 | FluB_HA | B/Hong Kong/CUHK26732/2012 | Jan-2012 |
| MF955669 | FluB_HA | B/Hong Kong/CUHK29792/2011 | Oct-2011 |
| MF955670 | FluB_HA | B/Hong Kong/CUHK15388/2011 | Feb-2011 |
| MF955671 | FluB_HA | B/Hong Kong/CUHK18618/1998 | Sep-1998 |
| MF955672 | FluB_HA | B/Hong Kong/CUHK11469 /1999 | Feb-1999 |
| MF955673 | FluB_HA | B/Hong Kong/CUHK51669/2004 | Jul-2004 |
| MF955674 | FluB_HA | B/Hong Kong/CUHK11794 /1999 | Mar-1999 |
| MF955675 | FluB_HA | B/Hong Kong/CUHK22891/2002 | May-2002 |
| MF955676 | FluB_HA | B/Hong Kong/CUHK34393/2002 | Aug-2002 |
| JX429604 | FluB_HA | B/Hong Kong/CUHK22975/2001 | May-2001 |
| JX429608 | FluB_HA | B/Hong Kong/CUHK34987/2002 | Aug-2002 |
| JX429609 | FluB_HA | B/Hong Kong/CUHK35884/2002 | Sep-2002 |
| JX429614 | FluB_HA | B/Hong Kong/CUHK5597/2003 | Jan-2003 |
| JX429615 | FluB_HA | B/Hong Kong/CUHK5879/2003 | Jan-2003 |
| JX429617 | FluB_HA | B/Hong Kong/CUHK6081/2003 | Jan-2003 |
| JX429618 | FluB_HA | B/Hong Kong/CUHK6088/2003 | Jan-2003 |
| JX429619 | FluB_HA | B/Hong Kong/CUHK6212/2003 | Feb-2003 |
| JX429620 | FluB_HA | B/Hong Kong/CUHK6320/2003 | Feb-2003 |
| JX429621 | FluB_HA | B/Hong Kong/CUHK6327/2003 | Feb-2003 |
| JX429622 | FluB_HA | B/Hong Kong/CUHK6328/2003 | Feb-2003 |
| JX429623 | FluB_HA | B/Hong Kong/CUHK6343/2003 | Feb-2003 |
| JX429624 | FluB_HA | B/Hong Kong/CUHK6550/2003 | Feb-2003 |
| JX429625 | FluB_HA | B/Hong Kong/CUHK22269/2003 | Mar-2003 |
| JX429626 | FluB_HA | B/Hong Kong/CUHK58582/2004 | Dec-2004 |
| JX429627 | FluB_HA | B/Hong Kong/CUHK5196/2005 | Jan-2005 |
| JX429628 | FluB_HA | B/Hong Kong/CUHK6241/2005 | Jan-2005 |
| JX429629 | FluB_HA | B/Hong Kong/CUHK6331/2005 | Jan-2005 |
| JX429630 | FluB_HA | B/Hong Kong/CUHK12098/2005 | May-2005 |
| JX429631 | FluB_HA | B/Hong Kong/CUHK44257/2005 | Aug-2005 |
| JX429632 | FluB_HA | B/Hong Kong/CUHK46869/2005 | Sep-2005 |
| JX429633 | FluB_HA | B/Hong Kong/CUHK49537/2005 | Nov-2005 |
| JX429634 | FluB_HA | B/Hong Kong/CUHK50098 /2006 | Jan-2006 |
| JX429635 | FluB_HA | B/Hong Kong/CUHK50543/2006 | Jan-2006 |
| JX429637 | FluB_HA | B/Hong Kong/CUHK51122/2006 | Jan-2006 |
| JX429638 | FluB_HA | B/Hong Kong/CUHK51422/2006 | Feb-2006 |
| JX429639 | FluB_HA | B/Hong Kong/CUHK55362/2006 | Apr-2006 |
| JX429640 | FluB_HA | B/Hong Kong/CUHK55544/2006 | Apr-2006 |
| JX429641 | FluB_HA | B/Hong Kong/CUHK56028 /2006 | Apr-2006 |
| JX429642 | FluB_HA | B/Hong Kong/CUHK56533/2006 | May-2006 |
| JX429643 | FluB_HA | B/Hong Kong/CUHK56837/2006 | May-2006 |
| JX429644 | FluB_HA | B/Hong Kong/CUHK57008/2006 | May-2006 |

| GenBank accession no. | Type | Isolate ID | Collection date |
|-----------------------|---------|-----------------------------|-----------------|
| JX429645 | FluB_HA | B/Hong Kong/CUHK63364/2006 | Aug-2006 |
| JX429646 | FluB_HA | B/Hong Kong/CUHK65660/2006 | Oct-2006 |
| JX429647 | FluB_HA | B/Hong Kong/CUHK66461 /2006 | Oct-2006 |
| JX429648 | FluB_HA | B/Hong Kong/CUHK48904 /2007 | Dec-2007 |
| JX429649 | FluB_HA | B/Hong Kong/CUHK60082/2008 | Jan-2008 |
| JX429650 | FluB_HA | B/Hong Kong/CUHK63116/2005 | Dec-2005 |
| JX429651 | FluB_HA | B/Hong Kong/CUHK64327 /2007 | Mar-2007 |
| JX429653 | FluB_HA | B/Hong Kong/CUHK67032/2008 | Apr-2008 |
| JX429654 | FluB_HA | B/Hong Kong/CUHK25867/2010 | Jan-2010 |
| JX429656 | FluB_HA | B/Hong Kong/CUHK28755/2010 | Feb-2010 |
| JX429660 | FluB_HA | B/Hong Kong/CUHK30950/2010 | Mar-2010 |
| JX429666 | FluB_HA | B/Hong Kong/CUHK6400/2003 | Feb-2003 |
| JX429667 | FluB_HA | B/Hong Kong/CUHK45094/2005 | Aug-2005 |
| JX429668 | FluB_HA | B/Hong Kong/CUHK26861/2010 | Jan-2010 |
| JX429673 | FluB_HA | B/Hong Kong/CUHK23362/2000 | Apr-2000 |
| JX429674 | FluB_HA | B/Hong Kong/CUHK24511/2000 | May-2000 |
| JX429676 | FluB_HA | B/Hong Kong/CUHK26708/2000 | Jul-2000 |
| JX429677 | FluB_HA | B/Hong Kong/CUHK28151/2000 | Sep-2000 |
| JX429679 | FluB_HA | B/Hong Kong/CUHK45490/2000 | Nov-2000 |
| JX429682 | FluB_HA | B/Hong Kong/CUHK45810 /2000 | Nov-2000 |
| JX429683 | FluB_HA | B/Hong Kong/CUHK52855/2000 | Dec-2000 |
| JX429684 | FluB_HA | B/Hong Kong/CUHK5140/2001 | Jan-2001 |
| JX429685 | FluB_HA | B/Hong Kong/CUHK5678/2001 | Jan-2001 |
| JX429686 | FluB_HA | B/Hong Kong/CUHK5792/2001 | Jan-2001 |
| JX429687 | FluB_HA | B/Hong Kong/CUHK5813/2001 | Jan-2001 |
| JX429689 | FluB_HA | B/Hong Kong/CUHK5949/2001 | Jan-2001 |
| JX429690 | FluB_HA | B/Hong Kong/CUHK13723/2001 | Mar-2001 |
| JX429691 | FluB_HA | B/Hong Kong/CUHK13803/2001 | Mar-2001 |
| JX429692 | FluB_HA | B/Hong Kong/CUHK22328/2001 | May-2001 |
| JX429693 | FluB_HA | B/Hong Kong/CUHK22361/2001 | May-2001 |
| JX429694 | FluB_HA | B/Hong Kong/CUHK22394/2001 | May-2001 |
| JX429697 | FluB_HA | B/Hong Kong/CUHK22731/2001 | May-2001 |
| JX429698 | FluB_HA | B/Hong Kong/CUHK22941/2001 | May-2001 |
| JX429699 | FluB_HA | B/Hong Kong/CUHK22980/2001 | May-2001 |
| JX429702 | FluB_HA | B/Hong Kong/CUHK34740/2002 | Aug-2002 |
| JX429703 | FluB_HA | B/Hong Kong/CUHK35386/2002 | Sep-2002 |
| JX429706 | FluB_HA | B/Hong Kong/CUHK50602/2002 | Oct-2002 |
| JX429709 | FluB_HA | B/Hong Kong/CUHK52162/2002 | Nov-2002 |
| JX429710 | FluB_HA | B/Hong Kong/CUHK5107/2003 | Jan-2003 |
| JX429712 | FluB_HA | B/Hong Kong/CUHK21937/2003 | Mar-2003 |
| JX429713 | FluB_HA | B/Hong Kong/CUHK51379/2003 | Jul-2003 |
| JX429714 | FluB_HA | B/Hong Kong/CUHK71975/2003 | Sep-2003 |
| JX429715 | FluB_HA | B/Hong Kong/CUHK73990/2003 | Nov-2003 |
| JX429716 | FluB_HA | B/Hong Kong/CUHK33398/2004 | Apr-2004 |
| JX429717 | FluB_HA | B/Hong Kong/CUHK33528/2004 | May-2004 |
| JX429721 | FluB_HA | B/Hong Kong/CUHK50385/2004 | Jul-2004 |
| JX429722 | FluB_HA | B/Hong Kong/CUHK50636/2004 | Jul-2004 |
| JX429724 | FluB_HA | B/Hong Kong/CUHK51106/2004 | Jul-2004 |
| JX429725 | FluB_HA | B/Hong Kong/CUHK51149 /2004 | Jul-2004 |
| JX429726 | FluB_HA | B/Hong Kong/CUHK52216/2004 | Aug-2004 |
| JX429727 | FluB_HA | B/Hong Kong/CUHK52640/2004 | Aug-2004 |
| JX429728 | FluB_HA | B/Hong Kong/CUHK52705/2004 | Aug-2004 |
| JX429729 | FluB_HA | B/Hong Kong/CUHK53722/2004 | Sep-2004 |
| JX429731 | FluB_HA | B/Hong Kong/CUHK5891 /2005 | Jan-2005 |
| JX429732 | FluB_HA | B/Hong Kong/CUHK6337/2005 | Jan-2005 |
| JX429733 | FluB_HA | B/Hong Kong/CUHK6702/2005 | Feb-2005 |
| JX429734 | FluB_HA | B/Hong Kong/CUHK7123/2005 | Feb-2005 |
| JX429735 | FluB_HA | B/Hong Kong/CUHK7597/2005 | Feb-2005 |
| JX429737 | FluB_HA | B/Hong Kong/CUHK8338/2005 | Mar-2005 |
| JX429738 | FluB_HA | B/Hong Kong/CUHK8842/2005 | Mar-2005 |
| JX429739 | FluB_HA | B/Hong Kong/CUHK11134/2005 | Apr-2005 |
| JX429740 | FluB_HA | B/Hong Kong/CUHK43516/2007 | Sep-2007 |
| JX429741 | FluB_HA | B/Hong Kong/CUHK44142/2007 | Sep-2007 |
| JX429742 | FluB_HA | B/Hong Kong/CUHK44997/2007 | Oct-2007 |
| JX429743 | FluB_HA | B/Hong Kong/CUHK47361/2005 | Oct-2005 |
| JX429745 | FluB_HA | B/Hong Kong/CUHK66862/2006 | Oct-2006 |
| JX429746 | FluB_HA | B/Hong Kong/CUHK40165/2005 | Jun-2005 |
| JX429748 | FluB_HA | B/Hong Kong/CUHK67089/2007 | Apr-2007 |
| JX429749 | FluB_HA | B/Hong Kong/CUHK63087/2007 | Feb-2007 |

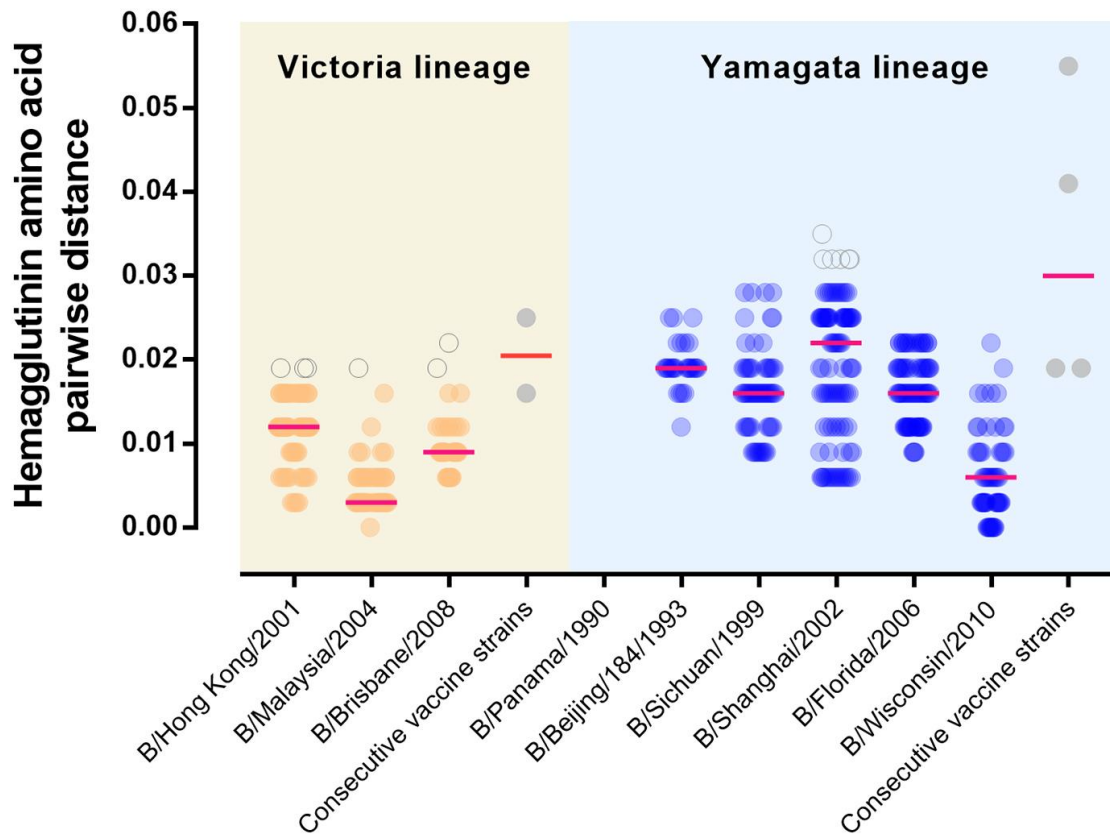
| GenBank accession no. | Type | Isolate ID | Collection date |
|-----------------------|---------|-----------------------------|-----------------|
| JX429751 | FluB_HA | B/Hong Kong/CUHK68567/2007 | May-2007 |
| JX429752 | FluB_HA | B/Hong Kong/CUHK74092/2007 | Aug-2007 |
| JX429753 | FluB_HA | B/Hong Kong/CUHK74822/2007 | Aug-2007 |
| JX429754 | FluB_HA | B/Hong Kong/CUHK61247/2008 | Jan-2008 |
| JX429756 | FluB_HA | B/Hong Kong/CUHK63126/2008 | Feb-2008 |
| JX429757 | FluB_HA | B/Hong Kong/CUHK63367/2008 | Mar-2008 |
| JX429758 | FluB_HA | B/Hong Kong/CUHK63832 /2008 | Mar-2008 |
| JX429760 | FluB_HA | B/Hong Kong/CUHK64054/2008 | Mar-2008 |
| JX429763 | FluB_HA | B/Hong Kong/CUHK69306/2008 | May-2008 |
| JX429764 | FluB_HA | B/Hong Kong/CUHK69850/2008 | May-2008 |
| JX429766 | FluB_HA | B/Hong Kong/CUHK28267/2010 | Feb-2010 |
| JX429767 | FluB_HA | B/Hong Kong/CUHK30805/2010 | Mar-2010 |
| JX429769 | FluB_HA | B/Hong Kong/CUHK32800/2010 | Apr-2010 |
| JX429770 | FluB_HA | B/Hong Kong/CUHK34437/2010 | May-2010 |
| JX429771 | FluB_HA | B/Hong Kong/CUHK38197/2010 | Jul-2010 |
| JX429776 | FluB_HA | B/Hong Kong/CUHK21905 /2000 | Feb-2000 |
| JX429778 | FluB_HA | B/Hong Kong/CUHK21910/2000 | Feb-2000 |
| JX429779 | FluB_HA | B/Hong Kong/CUHK6017/2001 | Feb-2001 |
| JX429780 | FluB_HA | B/Hong Kong/CUHK13773/2001 | Mar-2001 |
| JX429781 | FluB_HA | B/Hong Kong/CUHK13865/2001 | Mar-2001 |
| JX429782 | FluB_HA | B/Hong Kong/CUHK70022/2003 | Sep-2003 |
| JX429785 | FluB_HA | B/Hong Kong/CUHK50947 /2004 | Jul-2004 |
| JX429786 | FluB_HA | B/Hong Kong/CUHK63150/2008 | Feb-2008 |
| JX429787 | FluB_HA | B/Hong Kong/CUHK63194/2008 | Feb-2008 |
| JX429788 | FluB_HA | B/Hong Kong/CUHK81112/2008 | Dec-2008 |
| JX429790 | FluB_HA | B/Hong Kong/CUHK54261/2006 | Mar-2006 |
| JX429791 | FluB_HA | B/Hong Kong/CUHK51357/2004 | Jul-2004 |

*A total of 437 influenza A and 396 influenza B isolates were collected.



Influenza H3N2 vaccine strains from 1995/96 to 2012/13

Technical Appendix Figure 1. Pairwise hemagglutinin amino acid distances between circulating and vaccine strains of influenza A(H3N2), Hong Kong, China, 1996–2012. The study analyzed 502 circulating A(H3N2) viruses. Calculation was performed using a Poisson correction model with rate variation among sites assumed in gamma distribution. Alignment positions containing gaps were masked. All analyses were performed in MEGA 6 (<https://www.megasoftware.net/>). Red horizontal lines denote median values. Outliers (distance >2 SD) are shown as empty circles. The mean distance between circulating viruses and vaccine strains ranged from 0.009 to 0.014, indicating close relationship. All vaccine strains were recommended by the World Health Organization for both Northern and Southern Hemispheres, except A/Wellington/2004, which was recommended for Southern Hemisphere vaccines only. The mean distance between consecutive vaccine strains was 0.02.



Influenza B vaccine strains from 1995/96 to 2012/13

Technical Appendix Figure 2. Pairwise hemagglutinin amino acid distance between circulating and vaccine strains of influenza B, Hong Kong, China, 1996–2012. The study analyzed 481 circulating influenza B viruses. Calculation was performed using a Poisson correction model with rate variation among sites assumed in gamma distribution. Alignment positions containing gaps were masked. All analyses were performed in MEGA 6 (<https://www.megasoftware.net/>). Red horizontal lines denote median values. Outliers (distance >2 SD deviations) are shown as empty circles. The mean distance between circulating viruses and vaccine strains ranged from 0.003 to 0.012 and from 0.006 to 0.019 for the Victoria and Yamagata lineages, respectively. The mean distance between consecutive vaccine strains was 0.02 and 0.03 for Victoria and Yamagata lineages, respectively.