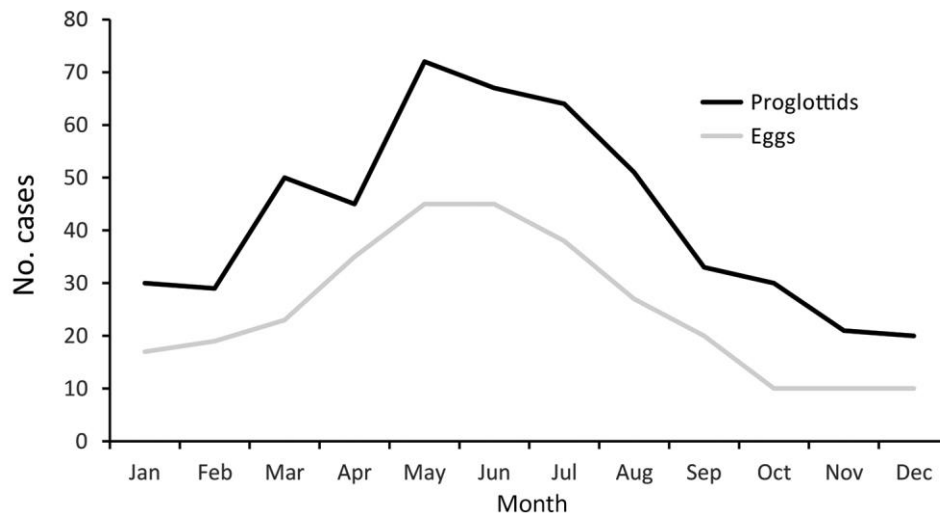


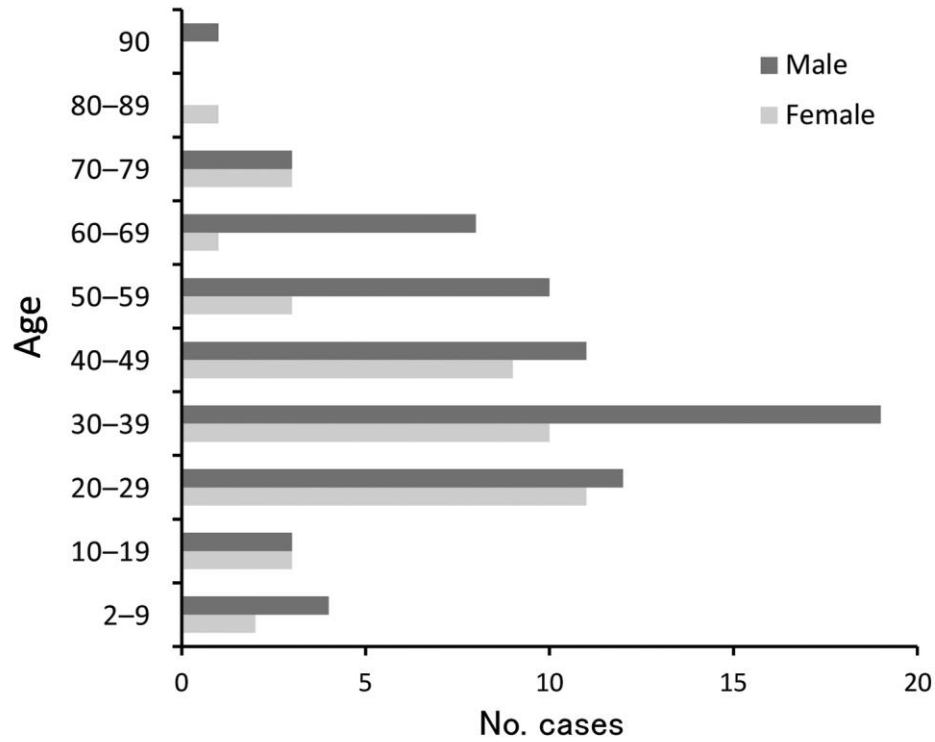
Epidemiology of *Diphyllobothrium nihonkaiense* Diphyllbothriasis, Japan, 2001–2016

Technical Appendix



Technical Appendix Figure 1. Average monthly occurrence of *Diphyllobothrium nihonkaiense*

tapeworm, by type of sample acquired from patient, Japan, 2001–2016.



Technical Appendix Figure 2. Age and sex distribution of patients infected with *Diphyllobothrium nihonkaiense* tapeworm, Japan, 2001–2016.