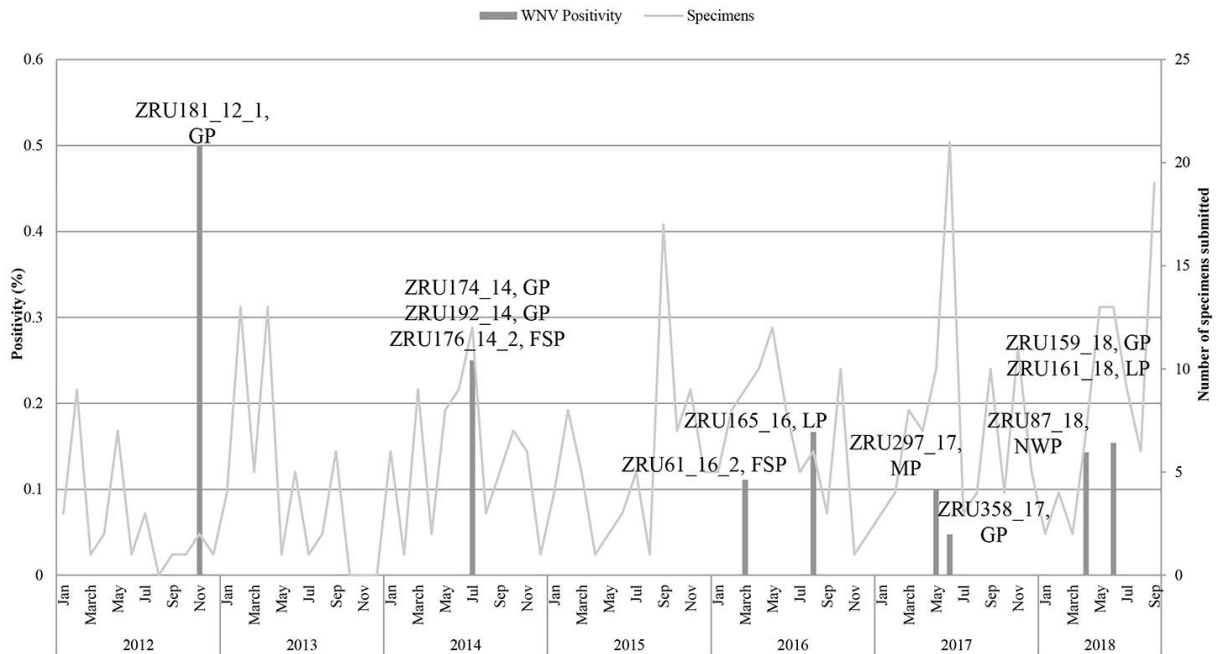


West Nile Virus in Wildlife and Nonequine Domestic Animals, South Africa, 2010–2018

Appendix



Appendix Figure. Seasonality of wildlife, nonequine domestic animals, and avian specimens (N = 608) submitted and West Nile virus reverse transcription PCR–positives (n = 11), South Africa, 2012–2018. West Nile virus PCR-positive results are indicated in the graph. FSP, Free State province; GP, Gauteng province; LP, Limpopo province; MP, Mpumalanga province; NWP, North West province.