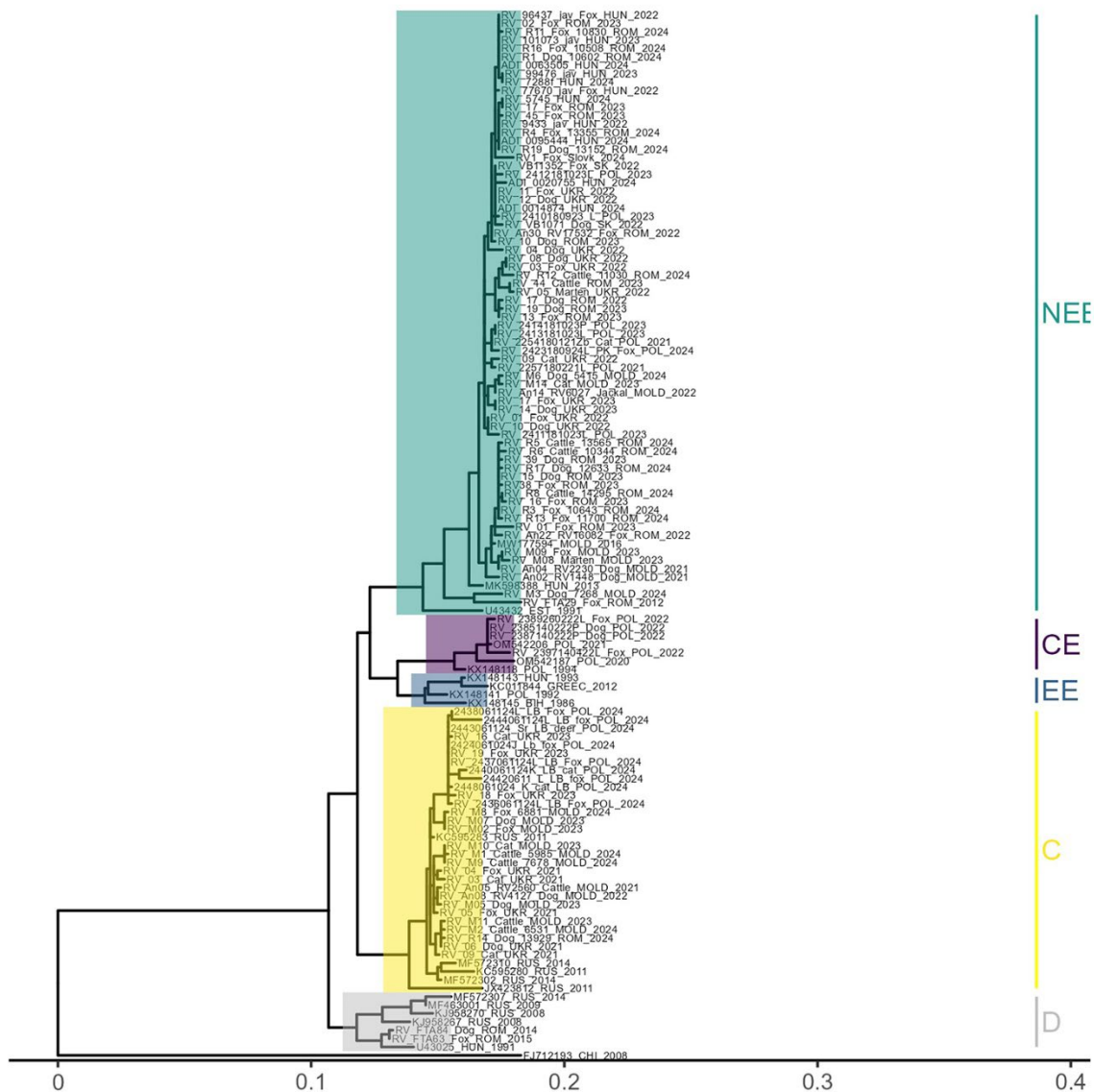


*EID cannot ensure accessibility for supplementary materials supplied by authors. Readers who have difficulty accessing supplementary content should contact the authors for assistance.*

# Rabies Reemergence, Central Europe, 2022–2024

## Appendix 2



**Appendix 2 Figure.** Phylogenetic tree of rabies virus strains detected in Central Europe from 2022–2024. Colors correspond to those in Appendix 2 Table 2 (<https://wwwnc.cdc.gov/EID/article/25-1597-App2.xlsx>).