

# *Brucella melitensis* in Asian Badgers, Northwestern China

## Appendix

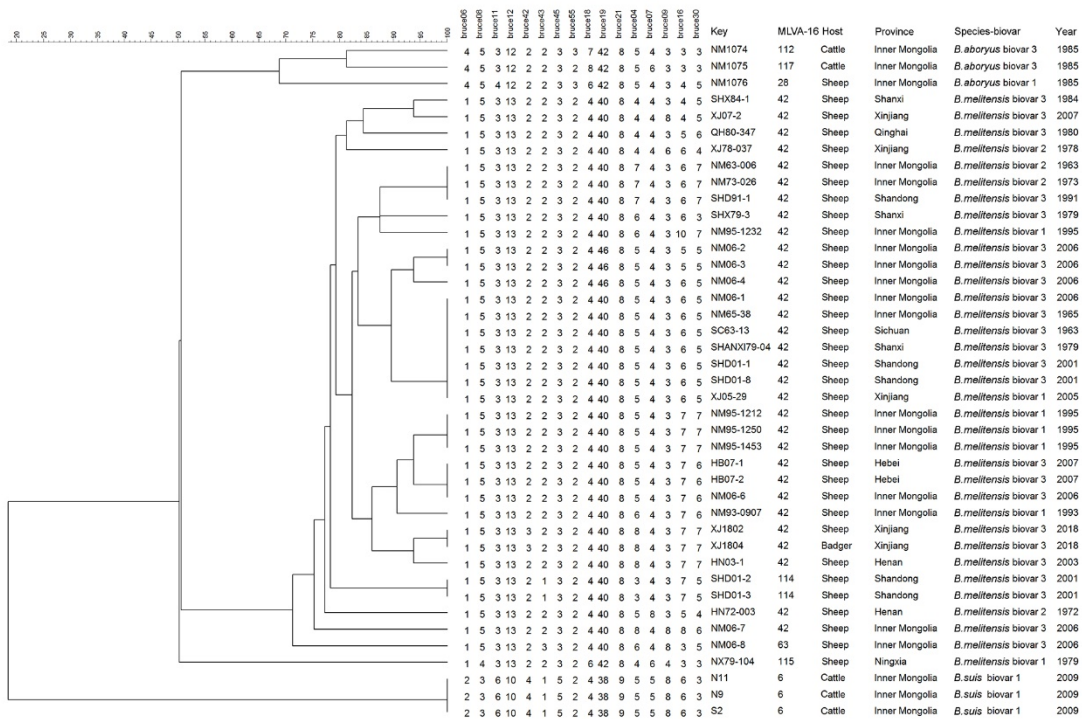
**Appendix Table.** Characteristics of *Brucella* isolates from Asian badger and other sources, northwestern China\*

Characteristic	<i>Brucella</i> isolate in		International reference strains		
	spleen of Asian badger	<i>Brucella</i> isolates in aborted sheep fetuses (n = 5)	16M	544A	1330s
CO <sub>2</sub> requirement	–	–	–	–	–
H <sub>2</sub> S produced†	–	–	+	++	+++
Dye inhibition‡					
Thionin	+	+	+	–	+
Basic fuchsin	+	+	+	+	–
Lysis by bacteriophage at RTD					
Tb RTD	–	–	–	+	–
Tb 10 <sup>4</sup> RTD	–	–	–	+	+
Iz	–	–	–	–	–
BK2	+	+	+	+	+
Agglutination of monospecific serum					
A	+	+	–	+	+
M	+	+	+	–	–
R	–	–	–	–	–
Species	<i>B. melitensis</i>	<i>B. melitensis</i>	<i>B. melitensis</i>	<i>B. abortus</i>	<i>B. suis</i>
Biotype	3	3	1	1	1

\*RTD, routine test dilution; –, negative; +, positive.

†+, weakly positive; ++, positive; +++, strongly positive.

‡Dye concentration in *Brucella* agar medium is 20 µg/mL (1:50,000 dilution).



**Appendix Figure.** Dendrogram based on the MLVA-16 genotyping assay showing relationship between *Brucella* isolates from an Asian badger and aborted sheep fetuses and other bacteria, northwestern China. Shown are serial numbers for *Brucella* isolates; MLVA-16 genotype and host from which the bacteria was isolated; province; Species-biovar (biotyping result corresponding to each isolate); and year of isolation. Scale bar indicates percent relatedness. MLVA, multiple locus variable number tandem repeat analysis typing assay