

# Non-*C. difficile* *Clostridioides* Bacteremia in Intensive Care Patients, France

## Appendix

**Appendix Table 1.** Biologic parameters of 22 intensive-care patients with bacteremia experiencing hemolysis\*

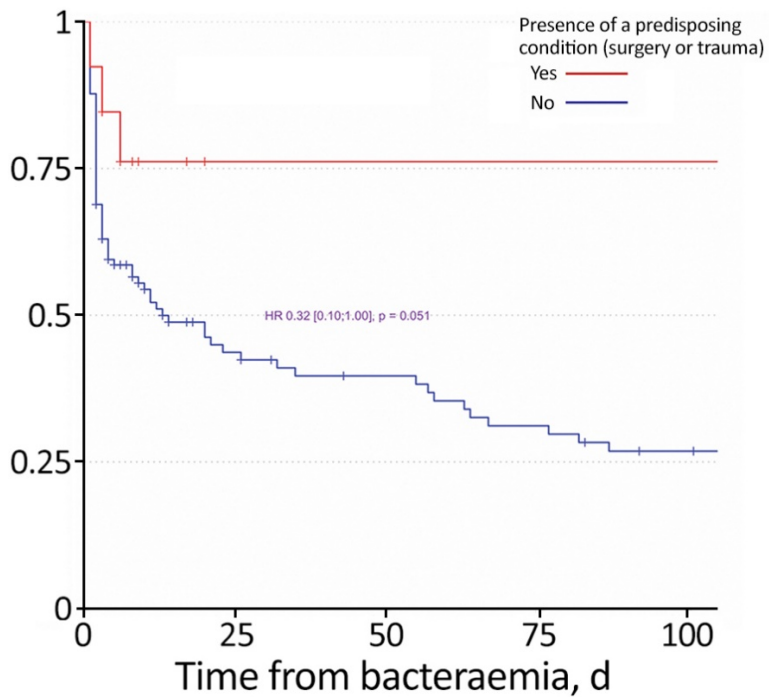
Patient no.	Hemolysis	Hemoglobin,				Bilirubin,		<i>Clostridioides</i> species
		g/dL	LDH, UI/L	ASAT, UI/L	ALAT, UI/L	μmol/L		
1	Yes	13.1	1,834	46	19	35.1	<i>C. perfringens</i>	
4	Yes	5.3	HI	HI	HI	HI	<i>C. perfringens</i>	
5	Yes	1.7	HI	HI	HI	HI	<i>C. perfringens</i>	
6	Yes	1.2	HI	HI	HI	14	<i>C. perfringens</i>	
13	Yes	2.8	510	–	–	63	<i>C. perfringens</i>	
16	Yes	3.4	2,905	2,634	1,608	12.2	<i>C. septicum</i>	
17	Yes	HI	HI	HI	HI	HI	<i>C. perfringens</i>	
26	Yes	3.3	5,033	402	32	112	<i>C. perfringens</i>	
27	Yes	7.1	–	137	26	9	<i>C. septicum</i>	
28	Yes	3.8	–	38	47	8.6	<i>C. orbiscindens</i>	
31	Yes	8.2	469	132	93	7.6	<i>C. perfringens</i>	
32	Yes	4.0	446	46	16	14	<i>C. novyi</i>	
34	Yes	8.5	3,788	878	1,094	37.4	<i>C. septicum</i>	
35	Yes	HI	HI	HI	HI	HI	<i>C. perfringens</i>	
53	Yes	8.8	4,501	1,644	588	10	<i>C. innocuum</i>	
60	Yes	3.8	630	58	17	53	<i>C. perfringens</i>	
74	Yes	4.9	3,830	50	30	72	<i>C. perfringens</i>	
84	Yes	HI	HI	HI	HI	HI	<i>C. ramosum</i>	
94	Yes	5.9	–	158	46	–	<i>C. perfringens</i>	
96	Yes	6.9	–	1,696	476	11	<i>C. baratii</i>	
115	Yes	6.0	–	–	–	25	<i>C. perfringens</i>	
132	Yes	4.6	–	–	–	–	<i>C. perfringens</i>	

\*Biologic parameters were not measurable for 3 patients due to hemolysis interferences. ALAT, alanine aminotransferase; ASAT, aspartate aminotransferase; HI, hemolysis interference; LDH, lactate dehydrogenase.

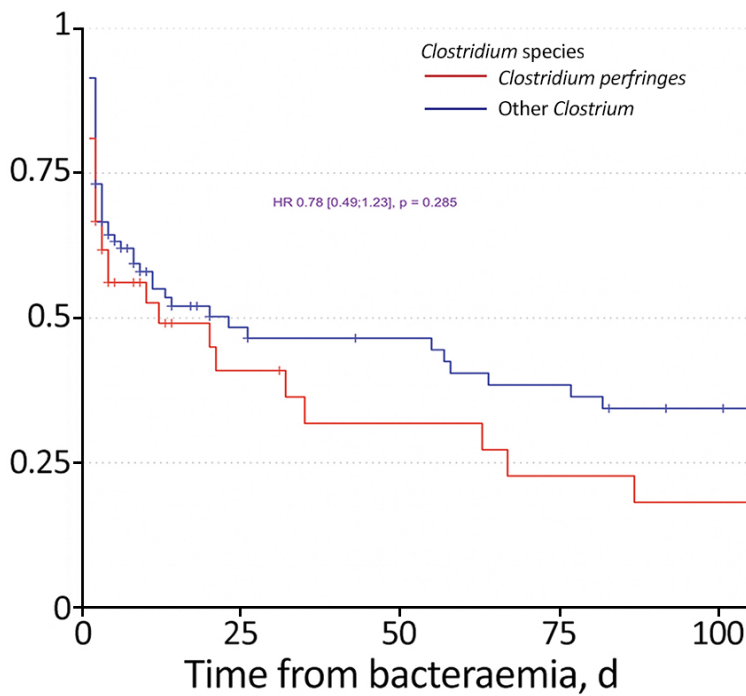
**Appendix Table 2.** Univariate analysis by antimicrobial agents of patients who died in study of non-*C. difficile* *Clostridioides* bacteremia, France\*

Category	HR (95% CI)	p value
Patients receiving antimicrobial drugs	1.01 (0.57–1.77)	0.977
Antimicrobial drugs		
Beta-lactams	0.88 (0.32–2.43)	0.799
Aminoglycoside	1.24 (0.73–2.08)	0.427
Anti-gram-positive bacteria	0.79 (0.47–1.34)	0.379
Metronidazole	0.81 (0.47–1.41)	0.461
Others	1.31 (0.56–3.06)	0.537

\*HR, hazard ratio.



**Appendix Figure 1.** Kaplan-Meier curve depending on the presence of predisposing conditions. Patients with a recent history of surgery or trauma had a better, but not significant, prognostic compared to other patients. HR, hazard ratio.



**Appendix Figure 2.** Kaplan-Meier curve depending on *Clostridioides* species.