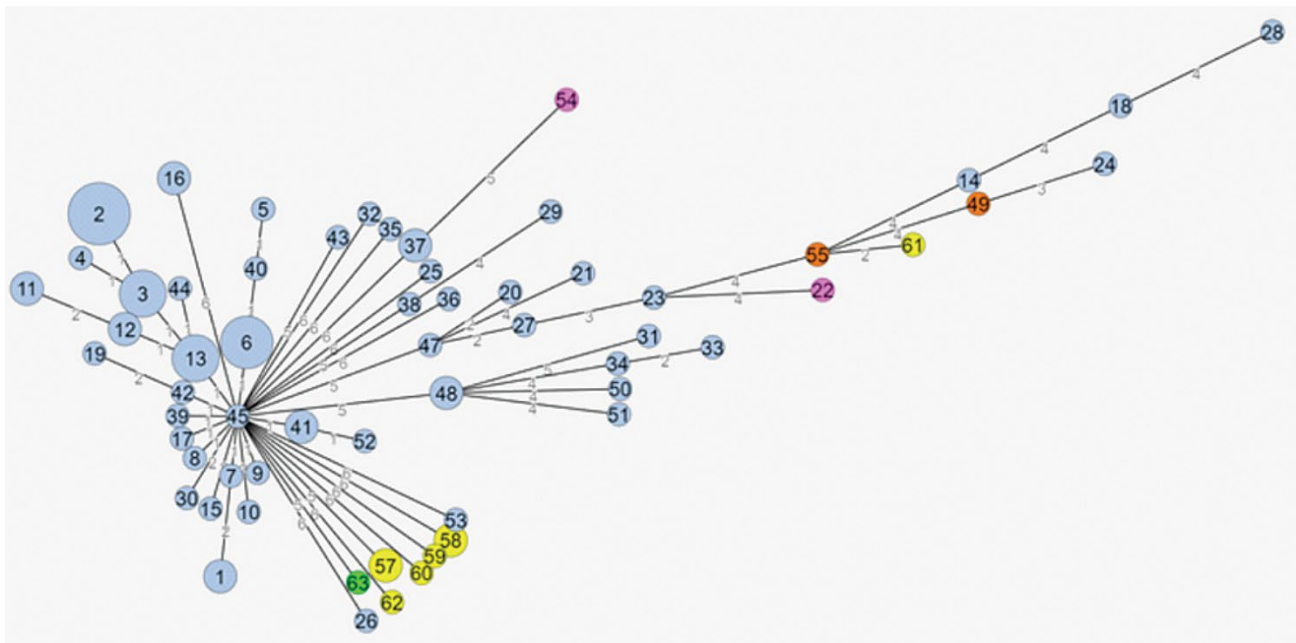


Photobacterium damselae subspecies *damselae* Pneumonia in Dead, Stranded Bottlenose Dolphin, Eastern Mediterranean Sea

Appendix



Appendix Figure. Neighbor-joining GrapeTree diagram generated in PubMLST based on the 6-gene multilocus sequence typing (MLST) profiles of all *Photobacterium damselae* subsp. *damselae* strains included in the PubMLST database (<https://pubmlst.org/organisms/photobacterium-damselae>). Node color indicates the country of origin: Italy (pale blue; 73 strains), Australia (yellow; 8 strains), Japan and United States (orange and pink, respectively; 2 strains each), and Israel (green; 1 strain). Number inside each node indicates sequence type (ST) by the 6-gene MLST scheme of Alba et al. (1). Node size is proportional to the number of strains with the same ST. Number within each branch indicates internode allelic distance for ST-63 determined for the *P. damselae* subsp. *damselae* strain characterized in this study in Israel and is shown as a green node.

Reference

1. Alba P, Caprioli A, Cocumelli C, Ianzano A, Donati V, Scholl F, et al. A new multilocus sequence typing scheme and its application for the characterization of *Photobacterium damsela* subsp. *damsela* associated with mortality in cetaceans. *Front Microbiol.* 2016;7:1656. [PubMed](#)
<https://doi.org/10.3389/fmicb.2016.01656>