

Successful Drug-Mediated Host Clearance of *Batrachochytrium salamandrivorans*

Appendix

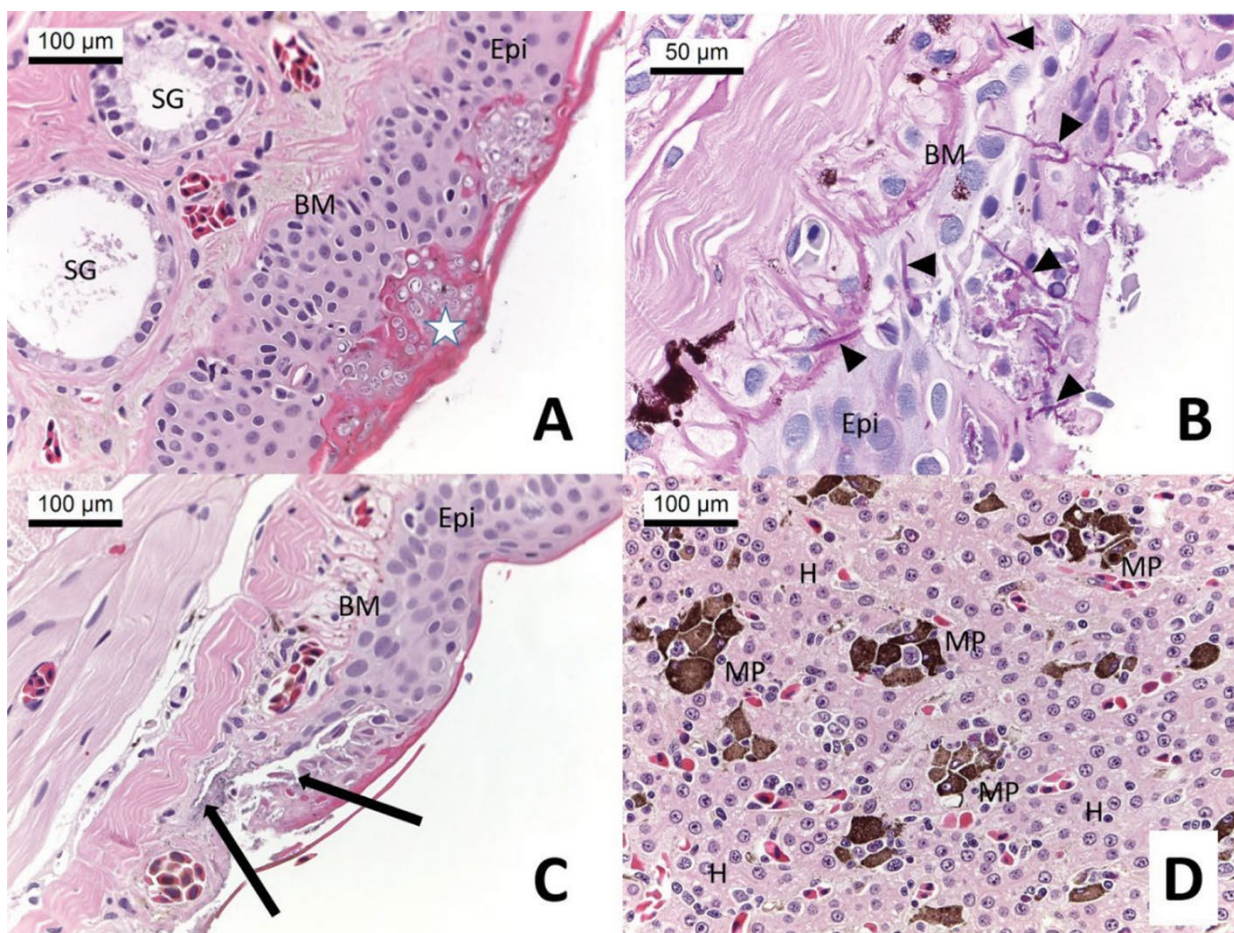
Appendix Table. Overview of all specimens included in study of drug-mediated host clearance of *Batrachochytrium salamandrivorans**

Specimen*	Day	Quantity (DNA copies)	Quantity standard deviation (SD)	DNA copies Log ₁₀
AN	1	97,814.55	2,888.88	4.99
AN	2	20,610.43	993.33	4.31
AN	3	10,357.56	3.84	4.02
AN	4	100,870.28	1,392.31	5
AN	6	182,388.38	12,702.08	5.26
AN	7	4,710.16	30.85	3.67
AN	8	702.09	38.00	2.85
AN	9	229.70	8.66	2.36
AN	10	48.51	7.98	1.69
AN	11	54.42	12.80	1.73
AN	12	0	0	0
AN	13	0	0	0
AN	25	0	0	0
AN	39	0	0	0
AN	70	0	0	0
FS1	1	124.99	50.02	2.1
FS1	2	0	0	0
FS1	3	0	0	0
FS1	4	0	0	0
FS1	5	0	0	0
FS1	6	0	0	0
FS1	7	0	0	0
FS1	8	0	0	0
FS1	9	30.18	6.94	1.48
FS1	10	181.96	16.19	2.26
FS1	11	0	0	0
FS1	12	0	0	0
FS1	14	0	0	0
FS1	15	0	0	0
FS1	16	0	0	0
FS1	17	0	0	0
FS1	18	0	0	0
FS1	19	0	0	0
FS1	20	0	0	0
FS1	21	0	0	0
FS1	33	0	0	0
FS1	47	0	0	0
FS1	78	0	0	0
FS2	1	961,044.81	13,775.94	5.98
FS2	2	187,159.45	2,379.12	5.27
FS2	3	1,411,910.87	731,212.19	6.15
FS2	4	187,675.69	25,583.81	5.27
FS2	5	323,325.87	10,057.46	5.51
FS2	6	247,256.05	13,091.20	5.39
FS2	7	302,326.41	10,131.12	5.48
FS2	8	305,274.94	10,105.11	5.48
FS2	9	172,268.50	1,103.88	5.24
FS2	10	501.96	0.99	2.7
FS2	11	146.93	8.56	2.17
FS2	12	1,703.93	126.53	3.23
FS2	14	1,558.95	22.21	3.19
FS2	15	470.53	31.41	2.67

Specimen*	Day	Quantity (DNA copies)	Quantity standard deviation (SD)	DNA copies Log ₁₀
FS2	16	1,304.81	7.57	3.12
FS2	17	5.00	3.00	0.7
FS2	18	236.67	37.24	2.37
FS2	19	196.57	1.03	2.29
FS2	20	89.10	7.14	1.95
FS2	21	155.96	52.93	2.19
FS2	22	162.45	21.46	2.21
FS2	23	0	0	0
FS2	24	36.27	28.59	1.56
FS2	25	0	0	0
FS2	26	0	0	0
FS2	33	0	0	0
FS2	47	0	0	0
FS2	78	0	0	0
FS3	1	50,512.43	317.95	4.7
FS3	2	6,078.08	46.76	3.78
FS3	3	27,689.05	394.25	4.44
FS3	4	5,954.38	1,185.35	3.77
FS3	5	34,195.77	272.26	4.53
FS3	6	1,823.10	98.90	3.26
FS3	7	173.51	39.94	2.24
FS3	8	54.32	4.12	1.73
FS3	9	398.87	27.27	2.6
FS3	10	540.63	67.15	2.73
FS3	11	11.15	4.51	1.04
FS3	12	0	0	0
FS3	14	0	0	0
FS3	15	0	0	0
FS3	16	0	0	0
FS3	17	0	0	0
FS3	18	0	0	0
FS3	19	0	0	0
FS3	20	0	0	0
FS3	21	0	0	0
FS3	33	0	0	0
FS3	47	0	0	0
FS3	78	0	0	0
FS4	1	27,673,266.00	655,513.44	7.44
FS4	2	40,631.60	305.72	4.61
FS4	3	42,650.40	2,344.67	4.63
FS4	4	263,280.81	6,193.92	5.42
FS4	6	261,867.19	343.80	5.42
FS5	1	835,023.63	28,024.37	5.92
FS5	2	21,582.07	1,550.41	4.33
FS5	3	116.21	27.19	2.06
FS5	4	7.93	7.34	0.9
FS5	6	17.10	4.77	1.23
FS5	7	28.75	7.47	1.46
FS5	8	0	0	0
FS5	9	0	0	0
FS5	10	0	0	0
FS5	11	0	0	0
FS5	12	0	0	0
FS5	13	9.48	7.30	0.95
FS5	25	0	0	0
FS5	39	0	0	0
FS5	70	0	0	0
FS6	1	1,692.20	173.35	3.23
FS6	2	19,124.52	1,177.04	4.28
FS6	3	5,221.63	142.21	3.72
FS6	4	23,972.42	879.63	4.38
FS6	5	14,026.67	806.26	4.15
FS6	6	11,001.19	163.21	4.04
FS6	7	820.75	28.02	2.91
FS6	8	944.87	52.88	2.98
FS6	9	2,789.34	124.68	3.45
FS6	10	0	0	0
FS6	11	0	0	0
FS6	12	0	0	0

Specimen*	Day	Quantity (DNA copies)	Quantity standard deviation (SD)	DNA copies Log ₁₀
FS6	14	25.14	6.37	1.4
FS6	15	0	0	0
FS6	16	0	0	0
FS6	17	0	0	0
FS6	18	0	0	0
FS6	19	0	0	0
FS6	20	0	0	0
FS6	21	0	0	0
FS6	33	0	0	0
FS6	47	0	0	0
FS6	78	0	0	0

*Duration of treatment per specimen are expressed in days and detected quantity of DNA copies indicated with standard deviation and Log₁₀-transformed values of the DNA copies (Figure 1, <https://wwwnc.cdc.gov/EID/article/29/2/22-1162-F1.htm>). DNA copies in bold define results above limit of detection. Grey cells define samples taken after end of active treatment. AN = Alpine newt (*Ichthyosaura alpestris*); FS1-6 = Fire salamander (*Salamandra Salamandra*).



Appendix Figure. A) Focal epidermal necrosis with intralesional *Bsal* thalli (star) in specimen FS4, HE stain; B) infiltrating fungal hyphae (arrowheads) in the epidermis of specimen FS4, PAS stain; C) bacteria within ulcerative epidermal lesions (arrows) of FS4, HE stain; D) liver of FS4 with multifocal melanin pigments (MP) but without obvious toxic effects on hepatocytes (H), HE stain. BM, basal membrane; Epi, epidermis; SG, serous gland.