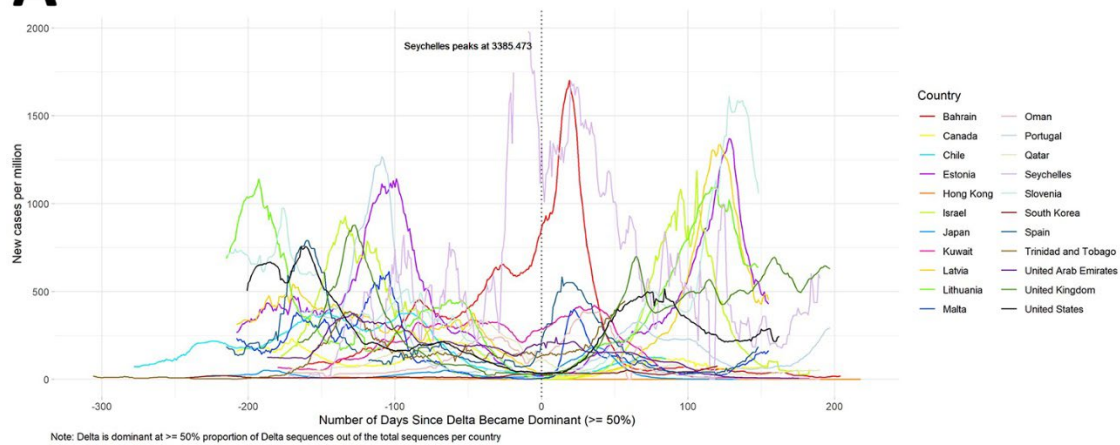


*EID cannot ensure accessibility for supplementary materials supplied by authors. Readers who have difficulty accessing supplementary content should contact the authors for assistance.*

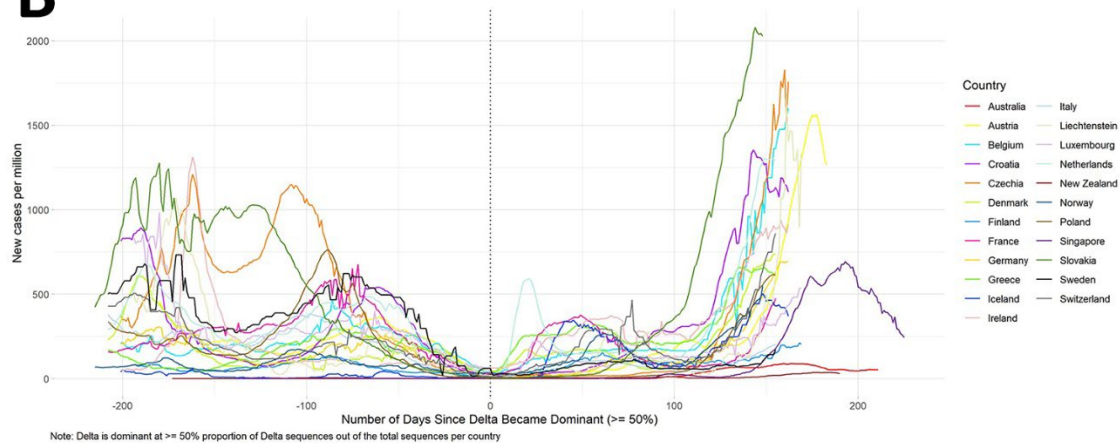
# COVID-19 Epidemiology during Delta Variant Dominance Period in 45 High-Income Countries, 2020–2021

## Appendix

### A



### B



**Appendix Figure.** A) Weekly new cases by days since Delta dominance\* (22 countries with earliest peak case dates). \*The Delta dominance date for each country was defined as the first week in which at least

50% of sequenced samples reported in GISAID were Delta. Countries by World Health Organization region: AFRO, Seychelles; AMRO, Canada, Chile, Trinidad and Tobago, United States; EMRO, Bahrain, Kuwait, Oman, Qatar, United Arab Emirates; EURO: Estonia, Israel, Latvia, Lithuania, Malta, Portugal, Slovenia, Spain, United Kingdom; WPRO, Hong Kong, Japan, South Korea. B) Weekly New Cases by Days Since Delta Dominance\* (23 countries with latest peak case dates). \*The Delta dominance date for each country was defined as the first week in which at least 50% of sequenced samples reported in GISAID were Delta. Countries by World Health Organization region: EURO, Austria, Belgium, Croatia, Czechia, Denmark, Finland, France, Germany, Greece, Iceland, Ireland, Italy, Liechtenstein, Luxembourg, Netherlands, Norway, Poland, Slovakia, Sweden, Switzerland; WPRO, Australia, New Zealand, Singapore.