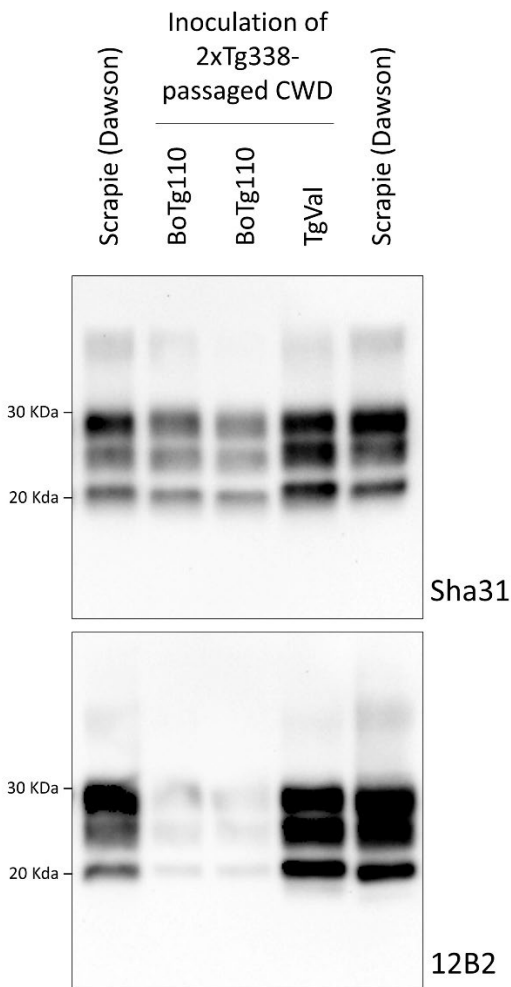


Zoonotic Potential of Chronic Wasting Disease After Adaptation in Intermediate Species

Appendix



Appendix Figure. Comparison of PK-resistant PrP (PrP^{res}) banding patterns with anti-PrP antibodies Sha31 and 12B2 after transmission of Tg338-adapted (two passages) to BoTg110 and TgVal. Dawson (a reference 21-kDa scrapie strain) is shown for molecular weight reference; the arrow on the left side of each image corresponds to 21 kDa MW.