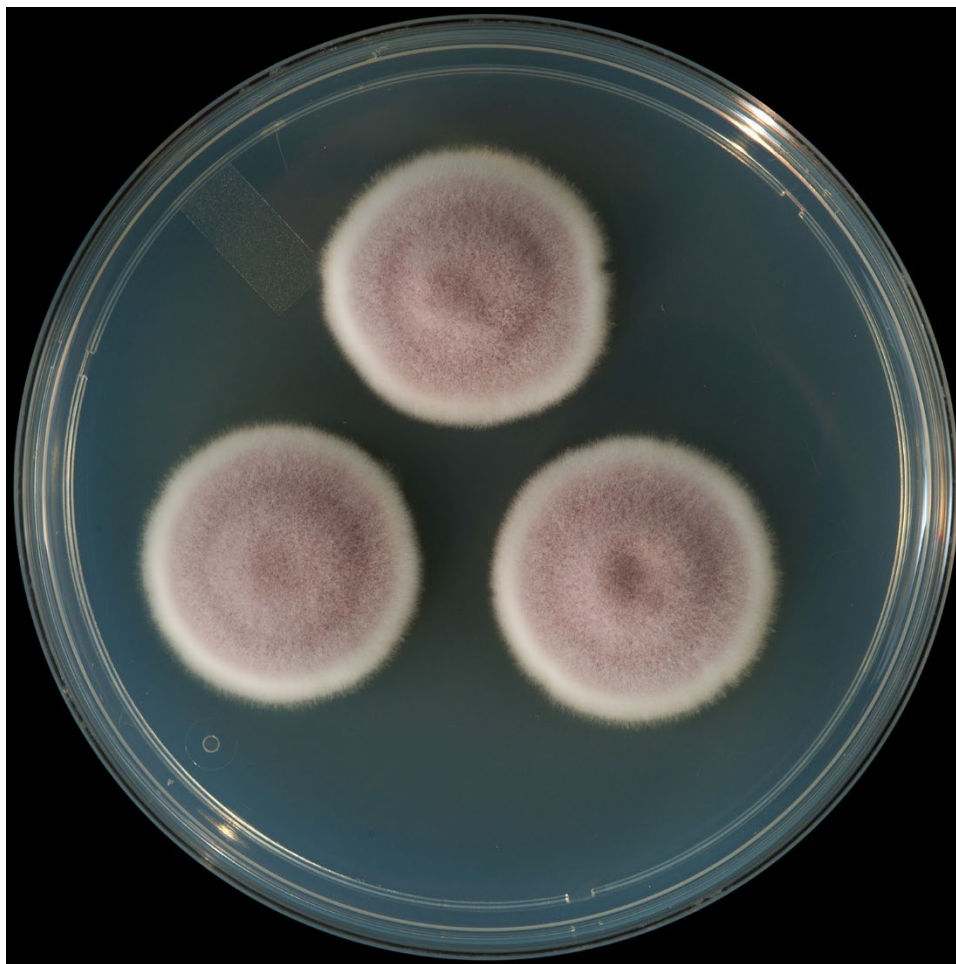
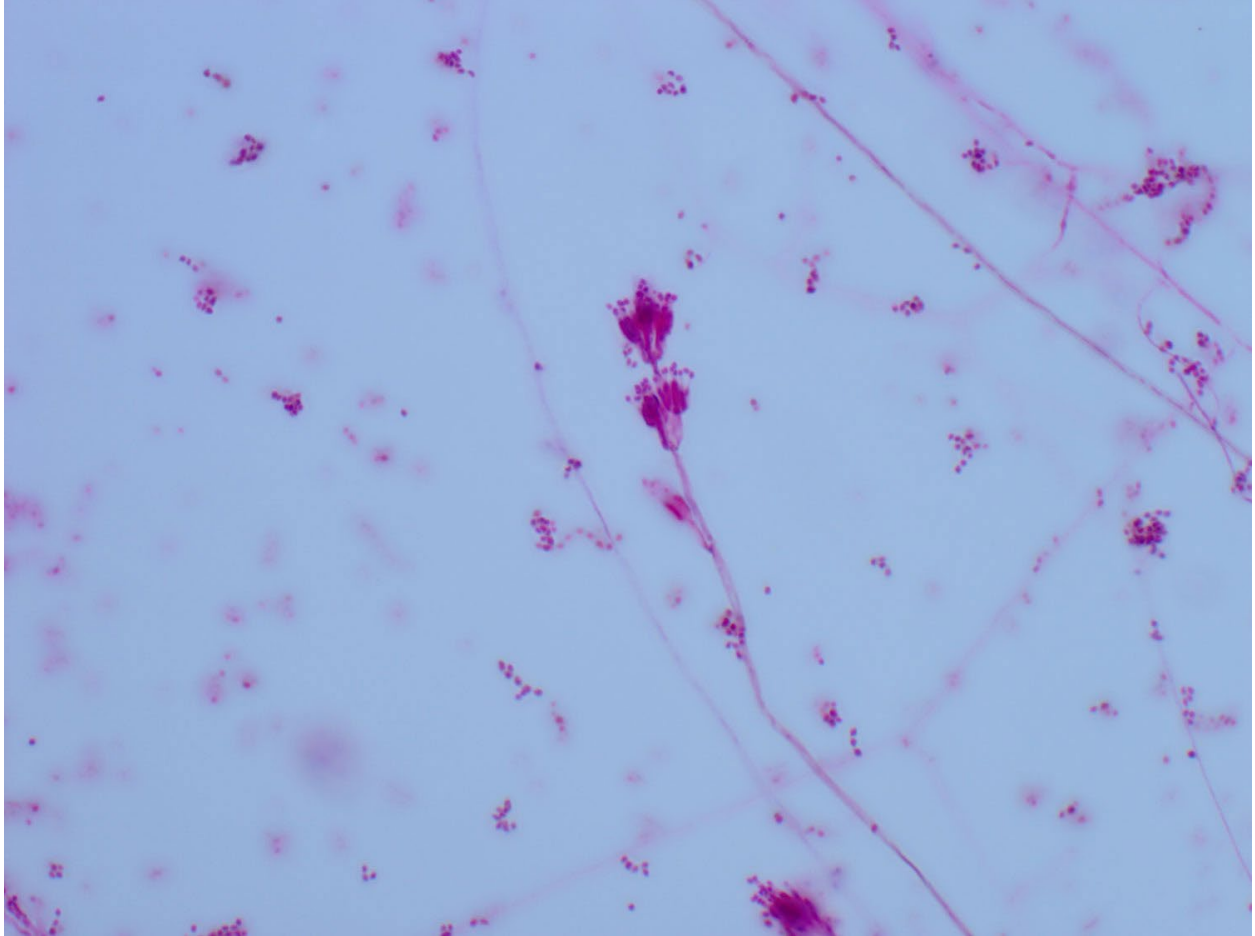


# Increased Rates of *Purpureocillium lilacinum* among Laboratory Culture Results, United States

## Appendix



**Appendix Figure 1.** Photo of the front of a *Purpureocillium lilacinum* culture showing white-violet colony pigmentation. The colony color is the distinguishing feature of this species. Photo provided by the Mycotic Diseases Branch, Centers for Disease Control and Prevention. Photo credit to Jim Gaffeny, Centers for Disease Control and Prevention Photographic Services.



**Appendix Figure 2.** Photo of *Purpureocillium lilacinum* under microscopy at 40X magnification. *P. lilacinum* is difficult to distinguish microscopically from *Paecilomyces* spp. Microscopic key features include phialides with swollen bases that taper to a thin neck, rough-walled conidiophore stipes, and absence of chlamydospores. Conidia are ellipsoidal to fusiform. Photo provided by the Mycotic Diseases Branch, Centers for Disease Control and Prevention.