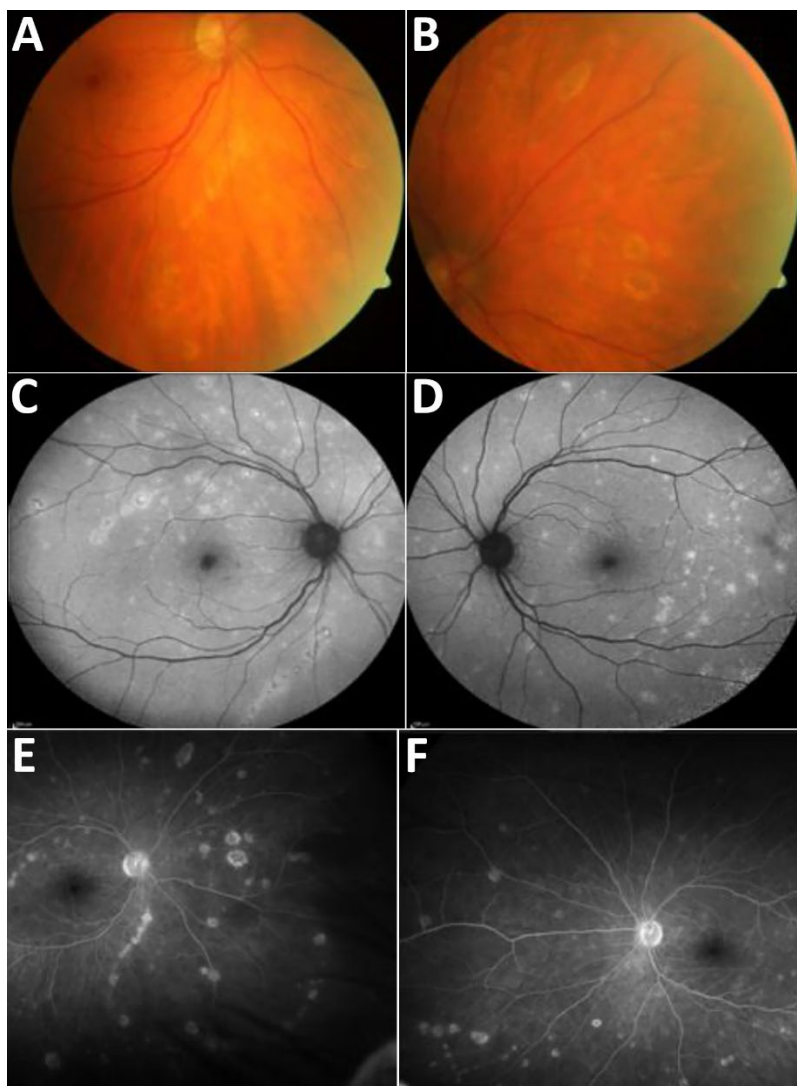
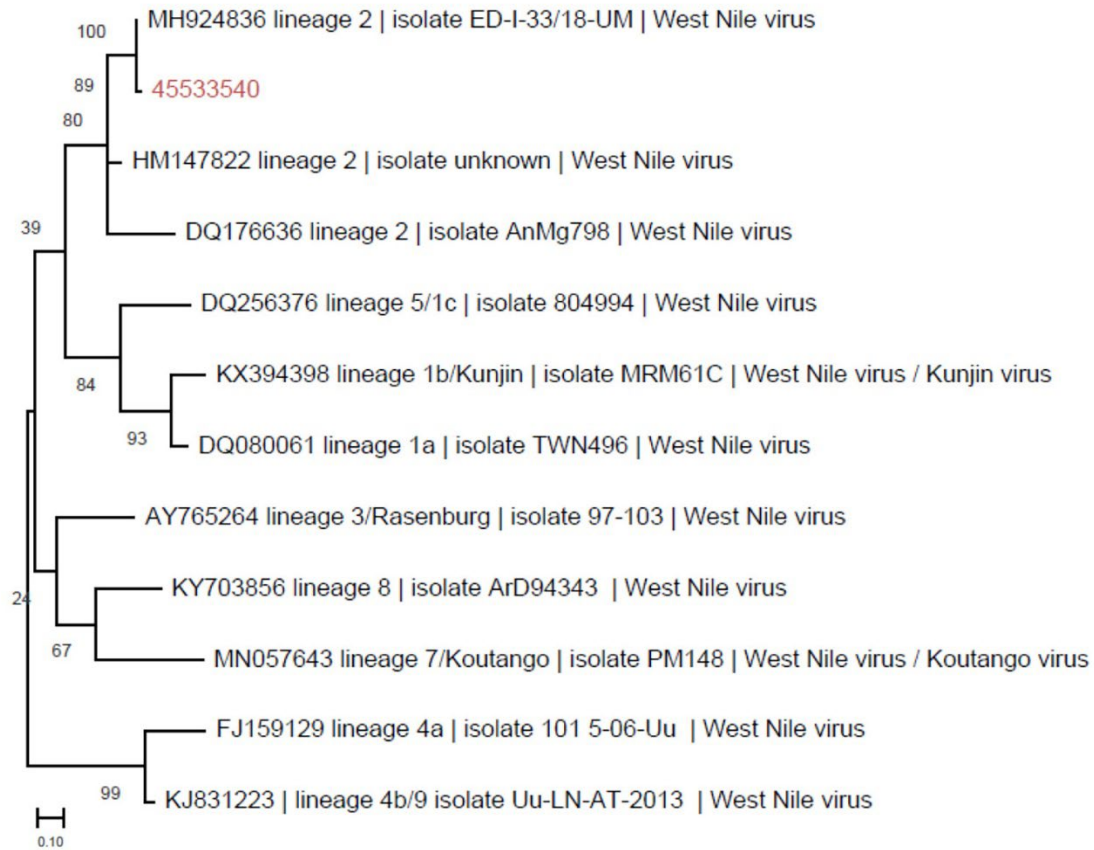


# West Nile Virus–Associated Hemophagocytic Lymphohistiocytosis, Switzerland

## Appendix



**Appendix Figure 1.** Fundoscopy, fundus autofluorescence, and fluorescein angiography. Multifocal chorioretinal lesions with target-like appearance.



**Appendix Figure 2.** Phylogenetic tree. Unrooted phylogenetic tree of West Nile virus lineages inferred using the Maximum Likelihood method under the General Time Reversible model. The scale bar indicates the number of substitutions per site. 45533540 corresponds to the patient's isolate.