

EID cannot ensure accessibility for supplementary materials supplied by authors.

Readers who have difficulty accessing supplementary content should contact the authors for assistance.

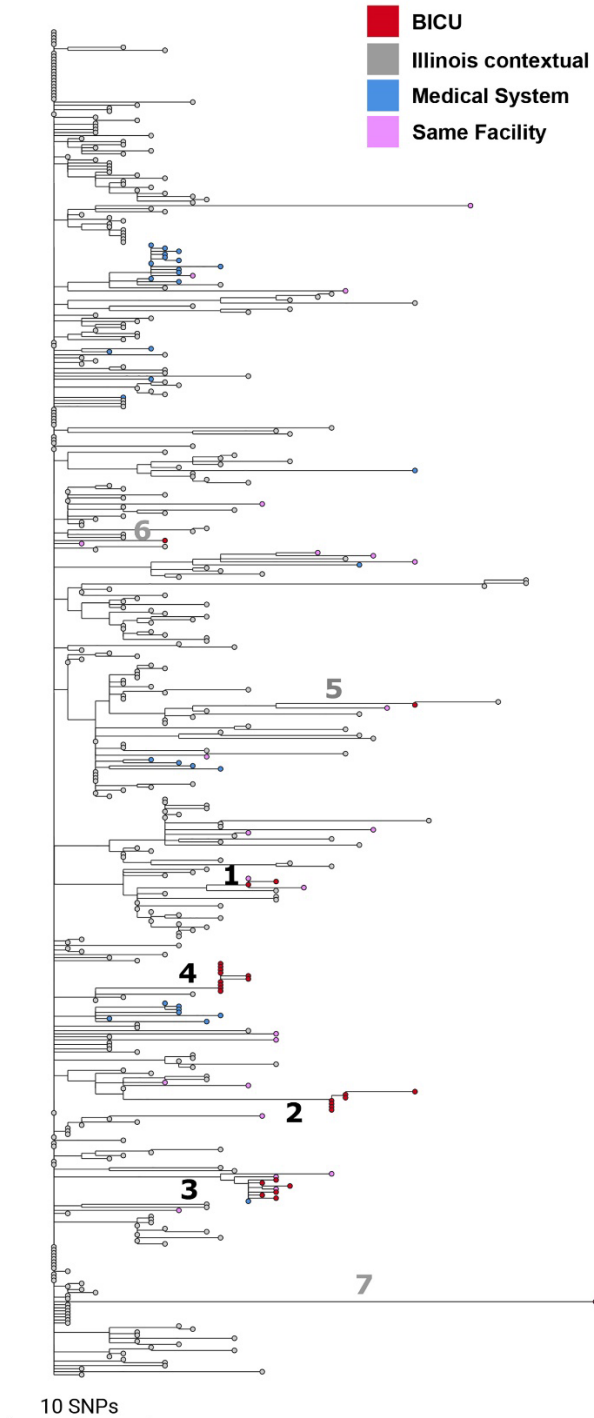
Candida auris Outbreak and Epidemiologic Response in a Burn Intensive Care Unit, Illinois, United States, 2021–2023

Appendix

Appendix Table. *Candida auris* sequences from study of outbreak in burn intensive care unit, Illinois, United States, 2021–2023

| SRA accession | Specimen source | Figure 3 | Appendix Figure 1 |
|---------------|-----------------|----------|-------------------|
| SRR27957377 | BICU | Included | Included |
| SRR27957376 | BICU | Included | Included |
| SRR27957375 | BICU | Included | Included |
| SRR27957374 | BICU | Included | Included |
| SRR27957373 | BICU | Included | Included |
| SRR27957372 | BICU | Included | Included |
| SRR27957370 | BICU | Included | Included |
| SRR27957369 | BICU | Included | Included |
| SRR27957368 | BICU | Included | Included |
| SRR27957367 | BICU | Included | Included |
| SRR22393499 | BICU | Included | Included |
| SRR22393498 | BICU | Included | Included |
| SRR22393497 | BICU | Included | Included |
| SRR22393496 | BICU | Included | Included |
| SRR24673435 | BICU | Included | Included |
| SRR24673434 | BICU | Included | Included |
| SRR24673423 | BICU | Included | Included |
| SRR24673412 | BICU | Included | Included |
| SRR24673401 | BICU | Included | Included |
| SRR24673390 | BICU | Included | Included |
| SRR24673379 | BICU | Included | Included |
| SRR24673377 | BICU | Included | Included |
| SRR24673376 | BICU | Included | Included |
| SRR24673385 | BICU | Included | Included |
| SRR24673384 | BICU | Included | Included |
| SRR24673383 | BICU | Included | Included |
| SRR24673382 | BICU | Included | Included |
| SRR24673381 | BICU | Included | Included |
| SRR24673418 | Medical system | Included | Included |
| SRR24673417 | Medical system | Included | Included |
| SRR24673416 | Medical system | Included | Included |
| SRR24673415 | Medical system | Included | Included |
| SRR24673414 | Medical system | Included | Included |
| SRR24673413 | Medical system | Included | Included |
| SRR24673411 | Medical system | Included | Included |
| SRR24673410 | Medical system | Included | Included |
| SRR24673409 | Medical system | Included | Included |
| SRR24673408 | Medical system | Included | Included |
| SRR24673407 | Medical system | Included | Included |
| SRR24673406 | Medical system | Included | Included |
| SRR24673405 | Medical system | Included | Included |
| SRR24673404 | Medical system | Included | Included |
| SRR24673403 | Medical system | Included | Included |

| SRA accession | Specimen source | Figure 3 | Appendix Figure 1 |
|---------------|---------------------|--------------|-------------------|
| SRR24673402 | Medical system | Included | Included |
| SRR24673400 | Medical system | Included | Included |
| SRR24673399 | Medical system | Included | Included |
| SRR24673398 | Medical system | Included | Included |
| SRR24673397 | Medical system | Included | Included |
| SRR24673396 | Medical system | Included | Included |
| SRR24673395 | Medical system | Included | Included |
| SRR24673394 | Medical system | Included | Included |
| SRR24673393 | Medical system | Included | Included |
| SRR24673392 | Medical system | Included | Included |
| SRR24673391 | Medical system | Included | Included |
| SRR24673389 | Medical system | Included | Included |
| SRR24673388 | Medical system | Included | Included |
| SRR24673387 | Medical system | Included | Included |
| SRR24673386 | Medical system | Included | Included |
| SRR22393500 | Same facility | Included | Included |
| SRR22393495 | Same facility | Included | Included |
| SRR24673375 | Same facility | Included | Included |
| SRR24673433 | Same facility | Included | Included |
| SRR24673432 | Same facility | Included | Included |
| SRR24673431 | Same facility | Included | Included |
| SRR24673430 | Same facility | Included | Included |
| SRR24673429 | Same facility | Included | Included |
| SRR24673428 | Same facility | Included | Included |
| SRR24673427 | Same facility | Included | Included |
| SRR24673426 | Same facility | Included | Included |
| SRR24673425 | Same facility | Included | Included |
| SRR24673424 | Same facility | Included | Included |
| SRR24673422 | Same facility | Included | Included |
| SRR24673421 | Same facility | Included | Included |
| SRR24673420 | Same facility | Included | Included |
| SRR24673419 | Same facility | Included | Included |
| SRR24673380 | Same facility | Included | Included |
| SRR24673378 | Same facility | Included | Included |
| SRR7909141 | Illinois contextual | Not_included | Included |
| SRR7909220 | Illinois contextual | Not_included | Included |
| SRR7909238 | Illinois contextual | Not_included | Included |
| SRR7909309 | Illinois contextual | Not_included | Included |
| SRR7909391 | Illinois contextual | Not_included | Included |
| SRR7909250 | Illinois contextual | Not_included | Included |
| SRR7909191 | Illinois contextual | Not_included | Included |
| SRR7909407 | Illinois contextual | Not_included | Included |
| SRR7909256 | Illinois contextual | Not_included | Included |
| SRR7909248 | Illinois contextual | Not_included | Included |
| SRR7909228 | Illinois contextual | Not_included | Included |
| SRR7909172 | Illinois contextual | Not_included | Included |
| SRR7909387 | Illinois contextual | Not_included | Included |
| SRR7909179 | Illinois contextual | Not_included | Included |
| SRR7909388 | Illinois contextual | Not_included | Included |
| SRR7909335 | Illinois contextual | Not_included | Included |
| SRR7909151 | Illinois contextual | Not_included | Included |
| SRR7909366 | Illinois contextual | Not_included | Included |
| SRR7909138 | Illinois contextual | Not_included | Included |
| SRR7909158 | Illinois contextual | Not_included | Included |
| SRR7909245 | Illinois contextual | Not_included | Included |
| SRR7909200 | Illinois contextual | Not_included | Included |
| SRR7909145 | Illinois contextual | Not_included | Included |
| SRR7909294 | Illinois contextual | Not_included | Included |
| SRR7909221 | Illinois contextual | Not_included | Included |
| SRR7909405 | Illinois contextual | Not_included | Included |
| SRR7909227 | Illinois contextual | Not_included | Included |
| SRR7909315 | Illinois contextual | Not_included | Included |
| SRR7909226 | Illinois contextual | Not_included | Included |
| SRR7909357 | Illinois contextual | Not_included | Included |
| SRR23919790 | Illinois contextual | Included | Included |
| SRR23919789 | Illinois contextual | Included | Included |
| SRR23919786 | Illinois contextual | Included | Included |
| SRR23919785 | Illinois contextual | Included | Included |
| SRR23919784 | Illinois contextual | Included | Included |



Appendix Figure. Neighbor-joining SNP-based phylogenetic tree of sequences from BICU isolates (red), isolates collected from the same facility (pink) or another facility within the medical system (blue) and all publicly available Illinois sequences available as of April 2024 (gray) (Appendix Table 1). Facility source for 314 of 361 Illinois contextual sequences was confirmed not to be within the BICU medical system. The facility source of the remaining 47 of 361 isolate sequences was not known. Branch lengths are SNP distances. SNP, single-nucleotide polymorphism.